
Fédération Internationale
de Basketball



FIBA

International Basketball
Federation

We Are Basketball

Official Basketball Rules 2006

Referees' Manual

Two-Person Officiating

As approved by

FIBA Central Board

Hong Kong, 31st March 2006

Valid as of 1st October **2006**



Table of Contents

1	Introduction	5
2	Preparation before the game	6
2.1	Arrival at venue	6
2.2	Meeting of officials	7
2.3	Physical preparation.....	8
2.4	Pre-game duties	9
3	Beginning of the periods	13
3.1	Administration before the beginning of the periods	13
3.2	Opening toss	14
3.3	Movement of officials.....	15
4	Positioning and responsibilities of officials	17
4.1	Officiating techniques	17
4.2	Division of responsibilities on the court.....	18
4.3	Trail official - positioning and responsibilities	19
4.4	Trail official - practical advice	24
4.5	Lead official - positioning and responsibilities	25
4.6	Lead official - practical advice	30
4.7	Trail and Lead official - Further practical advice	33
4.8	Pressing defences	34
4.9	Throw-in with pressing defence	35
4.10	Trapping defences	36
5	Out-of-bounds and throw-in situations	37
5.1	Responsibility for the lines	37
5.2	Throw-ins.....	38
5.3	Twenty-four second device	45
5.4	Ball returned to the backcourt.....	46
6	Shooting situations	47
6.1	Flight of the ball	47
6.2	Goal tending and Interference.....	48
6.3	Three-point field goal attempts	49
6.4	End of playing time for a period or extra period	52
7	Signals and Procedures	53
7.1	Signals.....	53
7.2	Violations	54
7.3	Fouls.....	55
7.4	Switching after fouls.....	56
7.5	Team control foul	56
7.6	Foul and successful field goal	58
7.7	Double foul	60
7.8	Positioning of officials after foul.....	62
7.9	Both officials calling	65
8	Free-throw Situations	67
8.1	Trail official.....	67



8.2	Lead official.....	68
8.3	Free throws without line up of players.....	69
9	Time-outs and Substitutions	70
9.1	Administration of time-out.....	71
9.2	Time-out after successful field goal.....	72
9.3	Administration of substitution.....	73
10	End of playing time.....	74
10.1	Checking the scoresheet.....	74
11	Review comments	76
12	Conclusion	77

Referees' Manual

Two-person officiating

Throughout the Referees' Manual – Two-person officiating, all references made to a player, coach, official, etc., in the male gender also apply to the female gender. It must be understood that this is done for practical reasons only.

1 Introduction

The mechanics of officiating is a system designed as a practical working method to facilitate the task of the officials on the court. It is intended to help them obtain the best possible position, enabling decisions concerning infractions of the rules to be taken correctly.

Common sense is a vital pre-requisite in a good official. A clear and thorough understanding of, not only the Official Basketball Rules, but also the spirit of the game, is absolutely essential. By penalising every technical infraction that occurs, the official will only succeed in producing dissatisfied spectators, players and coaches.

This manual is designed to standardise the mechanics and to prepare an official for the modern game.

Our aim is to add uniformity and consistency to the already acquired wealth of experience amongst the various officials.

All officials are required to follow these fundamental principles. The rest is up to them.

2 Preparation before the game

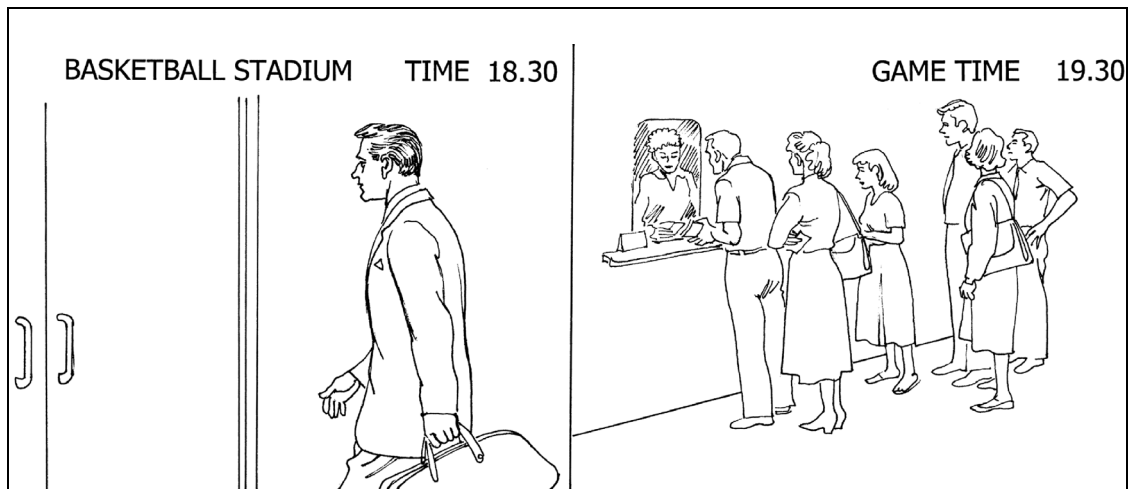


Diagram 1

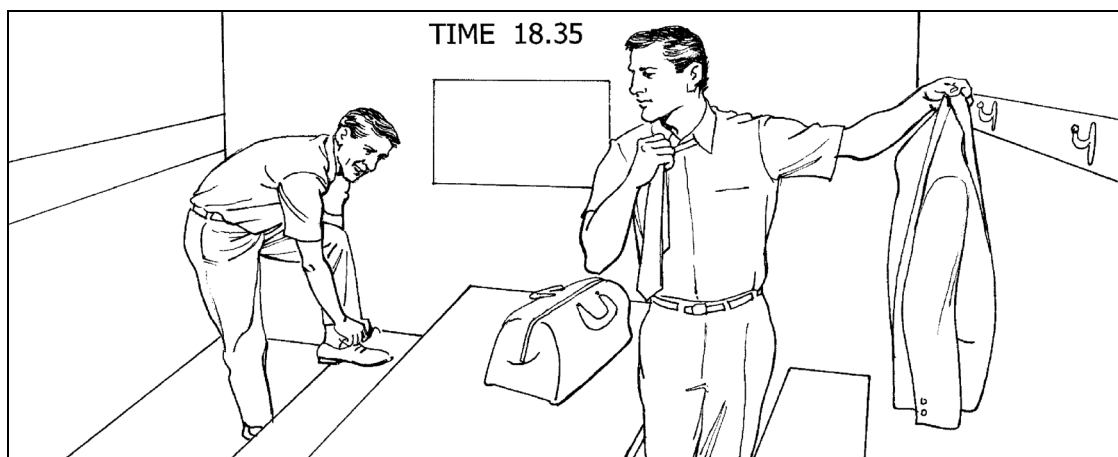


Diagram 2

2.1 Arrival at venue

It is essential that all officials make their travel arrangements in order to arrive at their destination in good time. When bad weather prevails, they should allow more time for their journey in order to avoid being late for the game. It is strongly advised that officials arrive at the venue of the game at least one hour before the scheduled start time of the game and, upon arrival, report to the organising body of the game or to the commissioner, if present.

They should be prepared properly for each game, i.e. in the best possible physical and mental condition. All meals should be completed at least 4 hours before the scheduled start time of the game and no alcohol consumed on the day of the game.

Personal appearance is very important. Officials should take pride in their presentation and dress properly before a game. It is expected that a suit (or sports blazer) and tie be worn by male officials arriving at the venue of the game. The official's uniform should be in good condition, clean and properly ironed. The officials should not wear a wristwatch, wristband or any kind of jewellery during the game.

In summary, we want our officials to be professional in their appearance, on and off the court.

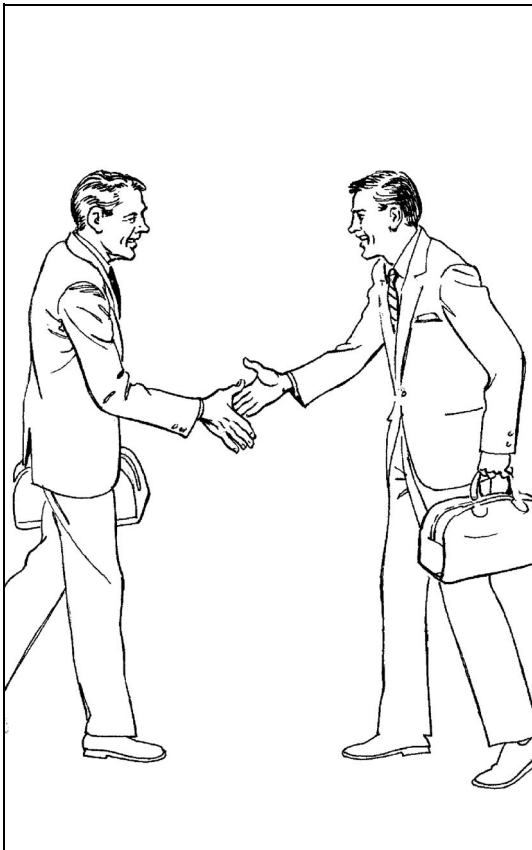


Diagram 3

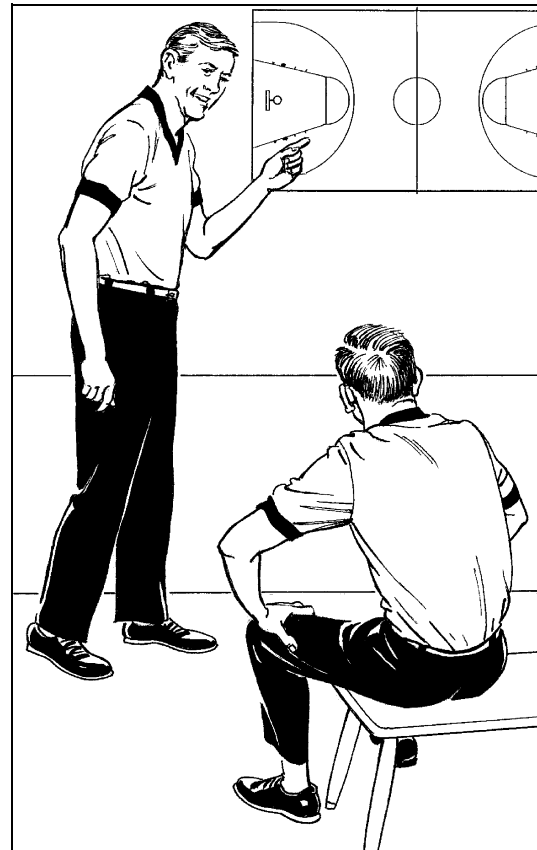


Diagram 4

2.2 Meeting of officials

After arriving at the venue, the two (2) officials should meet each other and prepare for the task that lies ahead of them. They are a team and should do everything they can to strengthen that unity.

A pre-game conference is most important.

Items to be discussed include:

1. Special situations: jump ball situations and procedure, technical fouls, free throws, TV time-outs etc.
2. Co-operation and teamwork, especially on double whistles.
3. Three-point field goal attempts.
4. Feel for the game.
5. Advantage/disadvantage principle.
6. Positioning and responsibilities on particular plays.
7. Off-the-ball coverage.
8. Double teaming and pressing defences.
9. End of playing time for a period or extra period.
10. Dealing with problems arising from participants and spectators.
11. General methods of communication:
 - Between partners
 - Towards table officials and commissioner.



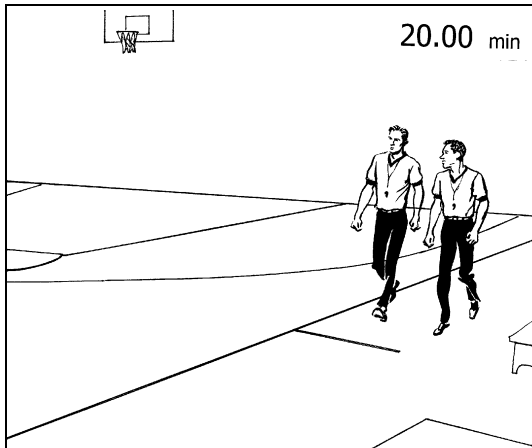
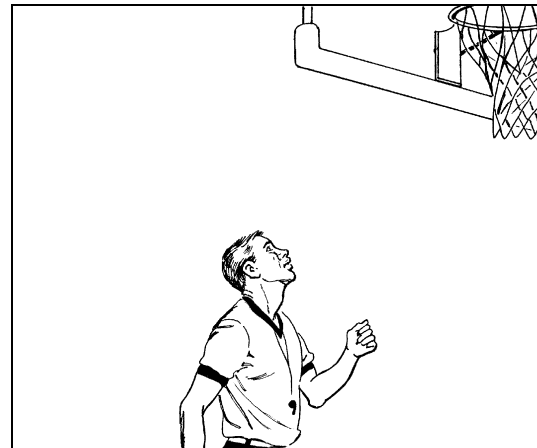
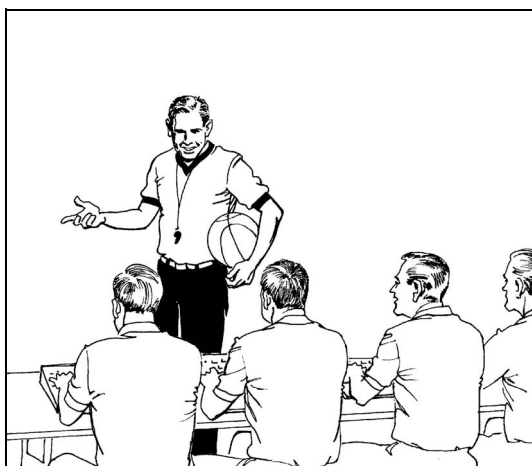
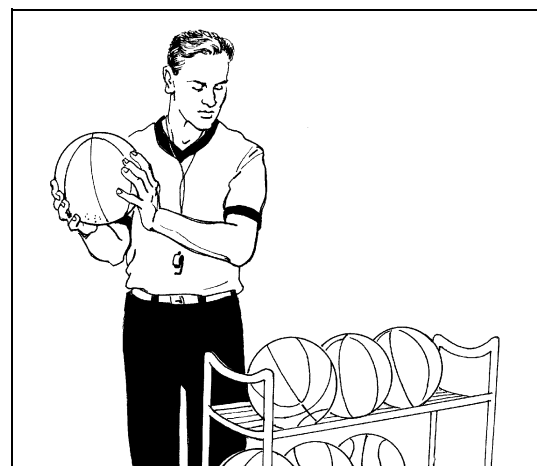
Diagram 5

2.3 Physical preparation

After changing into his uniform, each official prepares differently for a game. Nevertheless they should be reminded that the modern game of basketball requires a first class athletic performance, not just from the players, but also from the officials.

Irrespective of the age and experience of the official, physical pre-game preparation is necessary. Stretching, with various forms of exercises, is strongly recommended to prevent, or at least reduce, the risk of injury. There are also psychological benefits, enabling the official to feel mentally alert and in good condition for the action ahead.

A high degree of self-motivation and enthusiasm is needed. This can only come from the official himself.


Diagram 6

Diagram 7

Diagram 8

Diagram 9

2.4 Pre-game duties

The officials must arrive together on the playing court **at least twenty (20) minutes** before the start of the game and no later than five (5) minutes before the start of the second half.

This is the minimum amount of time necessary to inspect the playing facility properly and to observe the warm-up of the teams.

The referee is responsible for the approval of the playing court, the game clock and all technical equipment including the scoresheet (including players' licences if there is no commissioner present).

He shall also select the game ball, a used one, and mark it distinctly. Once the game ball has been determined, it shall not be made available to either team for practice prior to the start of the game.

The game ball should be in good condition and conform to the Rules.

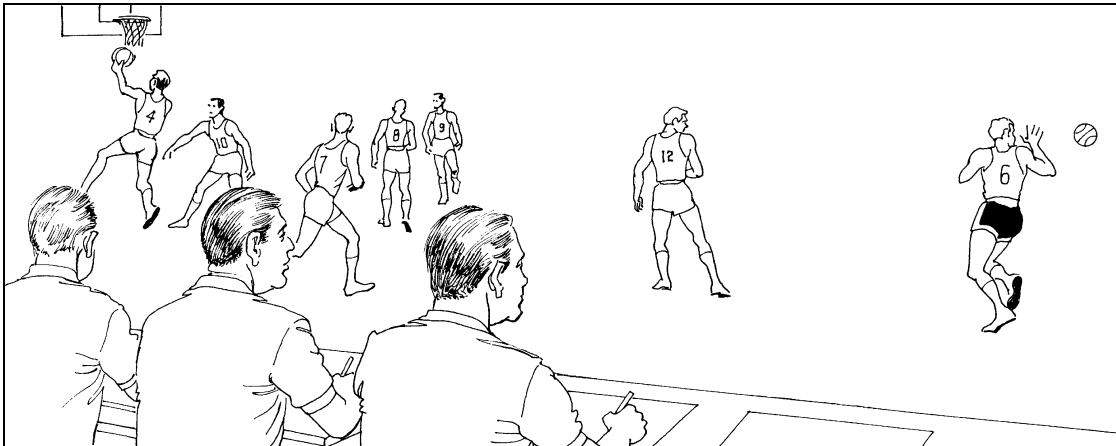


Diagram 10

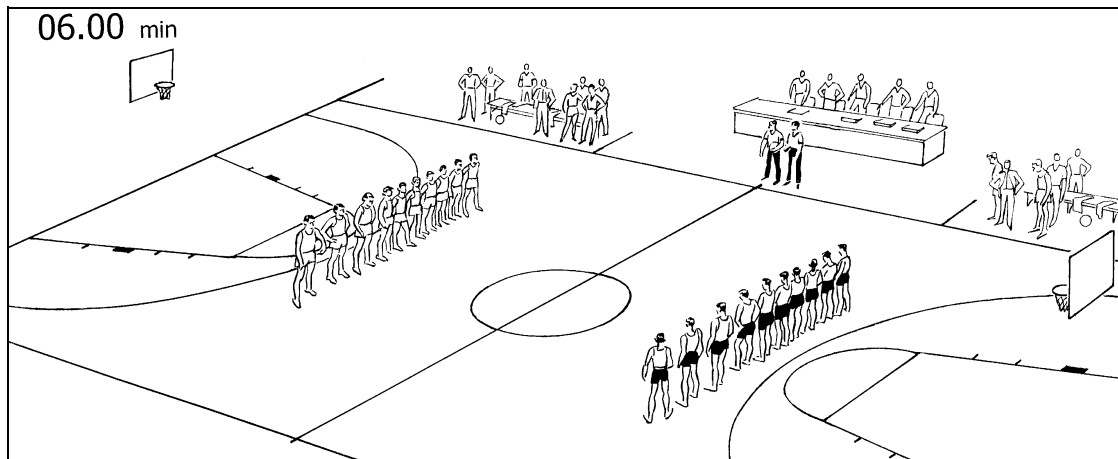
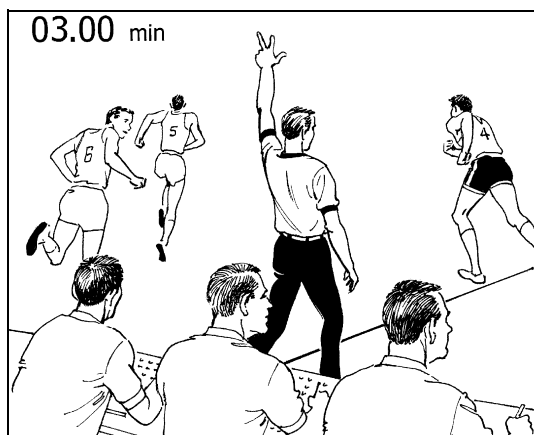
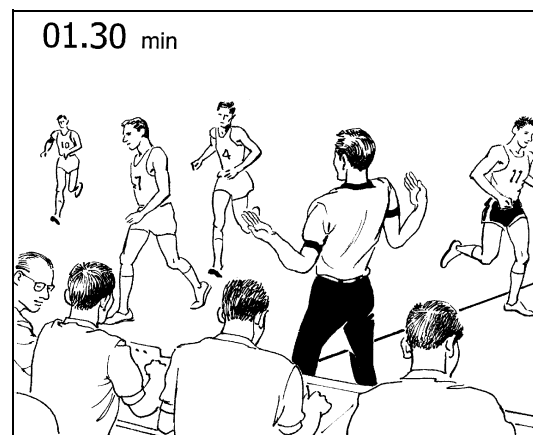


Diagram 11

The officials should take a position opposite the scorer's table and observe the teams carefully during their pre-game and half time warm-ups for any possible action which could lead to damage of game equipment. Grasping of the ring by a player in such a way as might result in damage to the ring or to the backboard should not be tolerated.

Should the officials observe such unsportsmanlike conduct, the coach of the offending team must be warned immediately. If there is a repetition, a technical foul is called on the individual involved.

The **referee** should also check that the **scorer** has correctly prepared the official scoresheet and ensure that **ten (10) minutes before the game** the coaches have confirmed their agreement with the names and corresponding numbers of the team members and the names of the coaches, by signing the scoresheet and indicating their five starting players.


Diagram 12

Diagram 13

Diagram 14

It is now common practice for the players, coaches and officials to be introduced to the spectators.

When such a pre-game presentation is to take place, it is suggested that it begin six (6) minutes before the start of the game. At this point, the officials shall move to a position near to the scorer's table and the referee shall blow his whistle and ensure that all players stop their warm-up and return immediately to their respective team bench areas.

As soon as all the players, coaches and officials have been introduced to the spectators, the referee blows his whistle and signals that three (3) minutes remain prior to the start of the game. The players can now begin the final phase of the pre-game warm-up (Diagram 13).

With one minute and thirty (1:30) seconds remaining before the game, the referee blows his whistle and ensures that all players stop their warm-up and return immediately to their team bench areas (Diagram 14).



Diagram 15

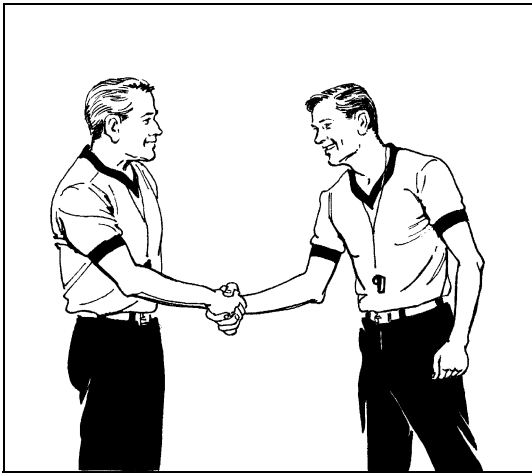


Diagram 16

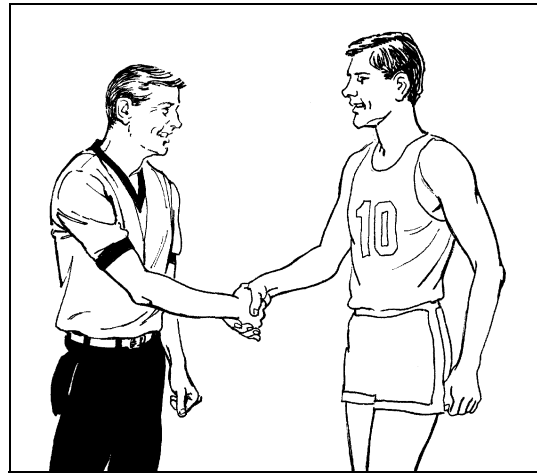


Diagram 17

The referee should verify that everyone is ready for the start of the game and that none of the players is wearing illegal equipment.

The referee is required to identify the captain of each team on the court. A handshake is the normal practice. This will be helpful to his partner, clearly indicating the two (2) captains on the floor.

3 Beginning of a period

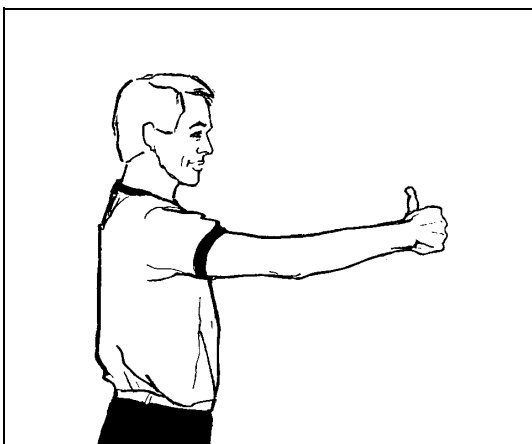


Diagram 18

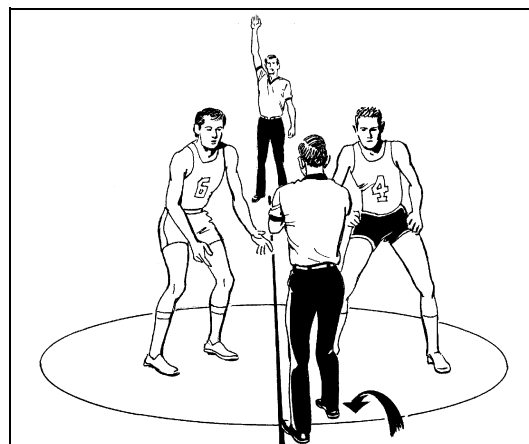


Diagram 19

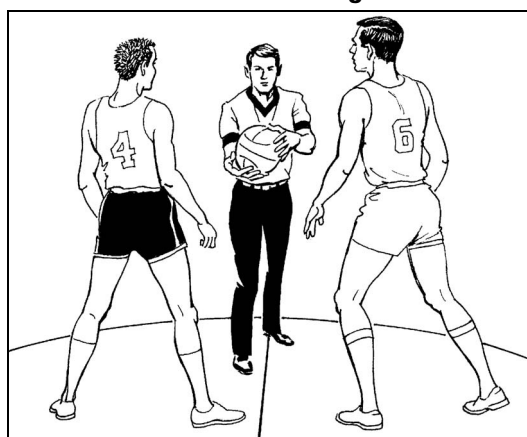


Diagram 20

3.1 Administration before the beginning of a period

Before stepping into the centre circle to administer the jump ball at the beginning of the first period and before administering the throw-in at the beginning of all other periods, the referee shall check with his partner, and through him check that all the table officials are ready. This shall be done with the 'Thumbs up' signal.

The referee should delay making the opening toss or administering the throw-in until he is absolutely assured that everything is in order.

At the beginning of the first period, the umpire takes a position close to the centre line, at the sideline adjacent to the scorer's table. He is the free official. That means he is not involved in the administration of the jump ball, but ready to move ahead of the play when the ball is tapped.

The referee stands on the opposite side, facing the scorer's table, ready to step into the centre circle to make the opening toss for the beginning of the first period.

To administer the throw-in at the beginning of all other periods, the referee shall take a position at the centre line extended, opposite the scorer's table, on the backcourt side of the player making the throw-in. The player making the throw-in shall be positioned straddling the centre line extended. The umpire shall take a position on the opposite sideline, at the free-throw line extended, in the throw-in team's frontcourt so as to box-in all players.

For the movement of the referee and umpire following the throw-in that begins all other periods other than the first period see Art. 5.2.

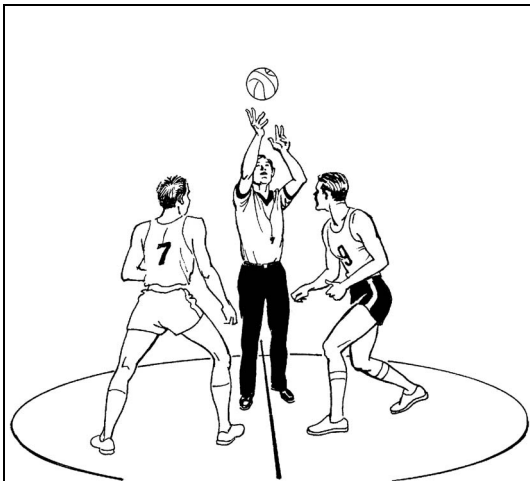


Diagram 21

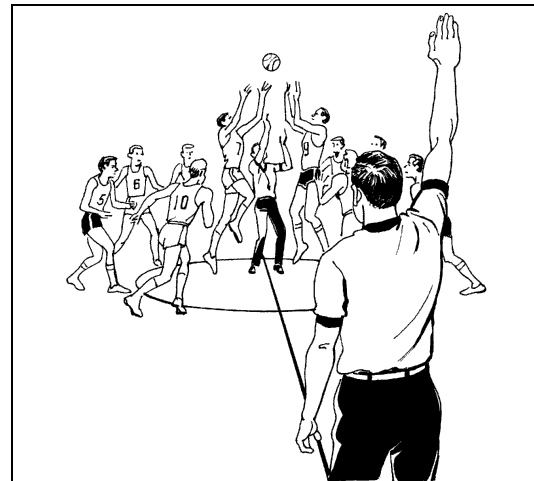


Diagram 22

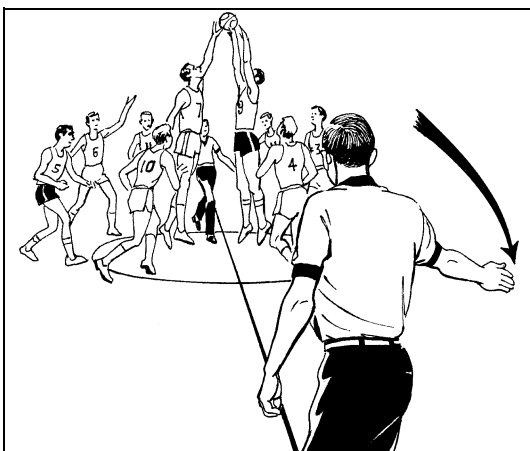


Diagram 23

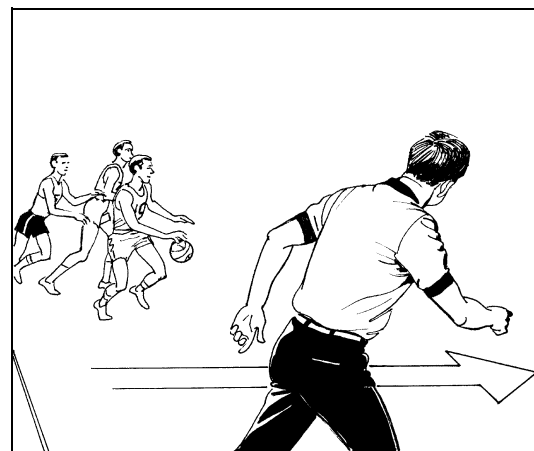


Diagram 24

3.2 Opening toss

Before making the toss, the referee should verify that both players are ready and each has both feet inside the half of the centre circle nearest to his own basket, with one foot close to the centre line.

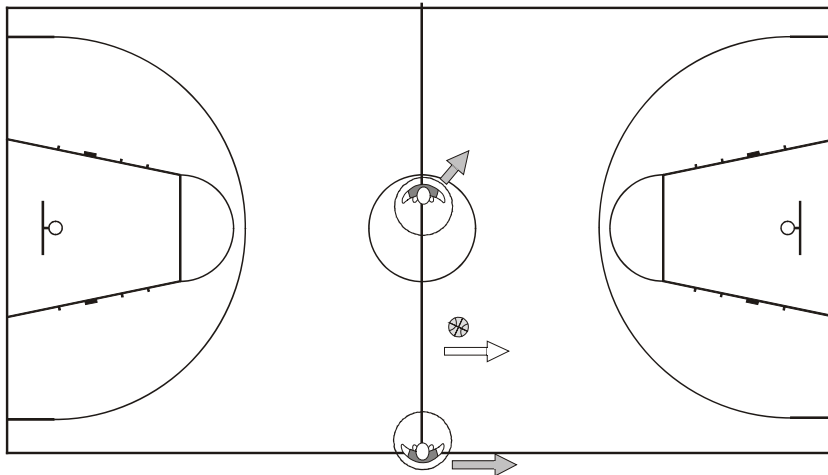
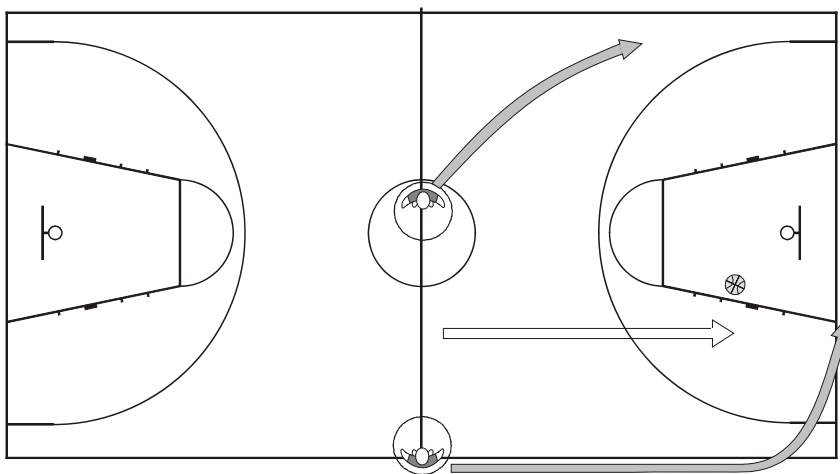
The ball shall be tossed vertically upwards between two (2) opponents, higher than either of them can reach by jumping.

After making the toss, it is recommended that the referee remains stationary, waiting to see in which direction the play will develop, until the ball and the players have moved away from the circle.

He should not attempt to back away on releasing the ball as this will affect the accuracy of the toss.

The umpire must verify that the tap was legal, i.e. that the ball had reached its highest point before being tapped and that the movement of the eight (8) non-jumpers was according to the Rules.

As soon as the ball is first tapped, the umpire gives the time-in signal and moves in the direction of play, ahead of the ball to assume the lead position.


Diagram 25

Diagram 26

3.3 Movement of officials

When the ball is tapped to the free official's right, he moves ahead of play in the same direction as the ball and continues to the endl ine, establishing his position as the lead official (Diagram 25 and Diagram 26).

The referee, who made the toss, maintains his position in the circle, observing the play. When the play has moved away from the mid-court area, he takes the trail position along the sideline (Diagram 26).

Whenever there is a change of team control and a new direction of play, the two (2) officials must adjust. They maintain their responsibility for the same lines, with the trail official becoming the new lead official and the lead official the new trail official.

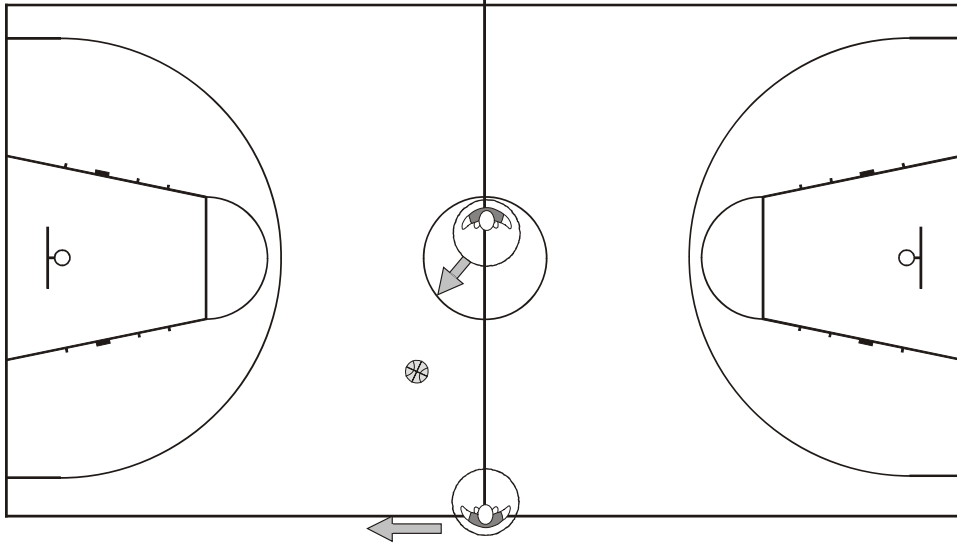


Diagram 27

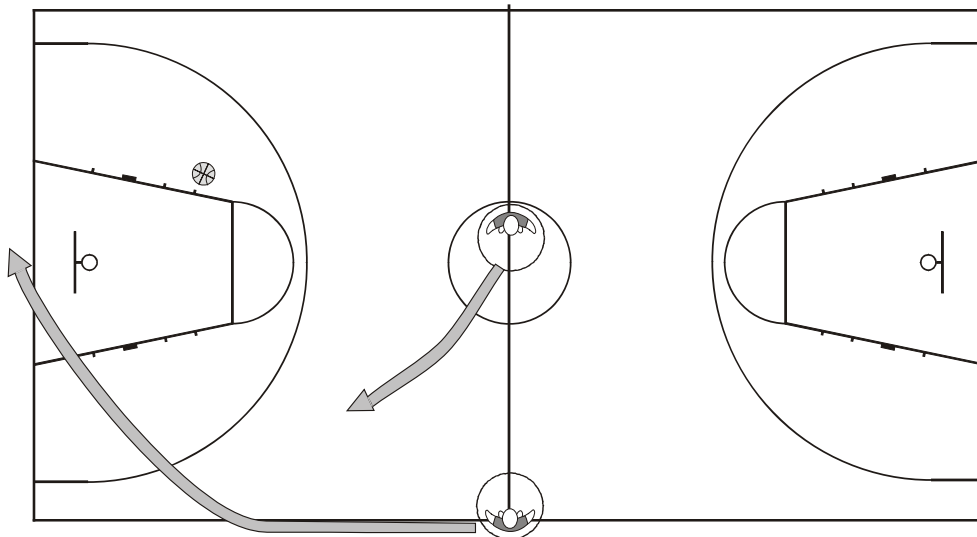


Diagram 28

When the ball is tapped to the free official's left, he moves ahead of the play in the same direction as the ball and continues to the endline, establishing his position as the lead official (Diagram 27 and Diagram 28).

The referee, who made the toss, should hold his position momentarily. This will allow the referee, without hindering the players, to cross the court towards the scorer's table and take the trail position (Diagram 28).

4 Positioning and responsibilities of officials

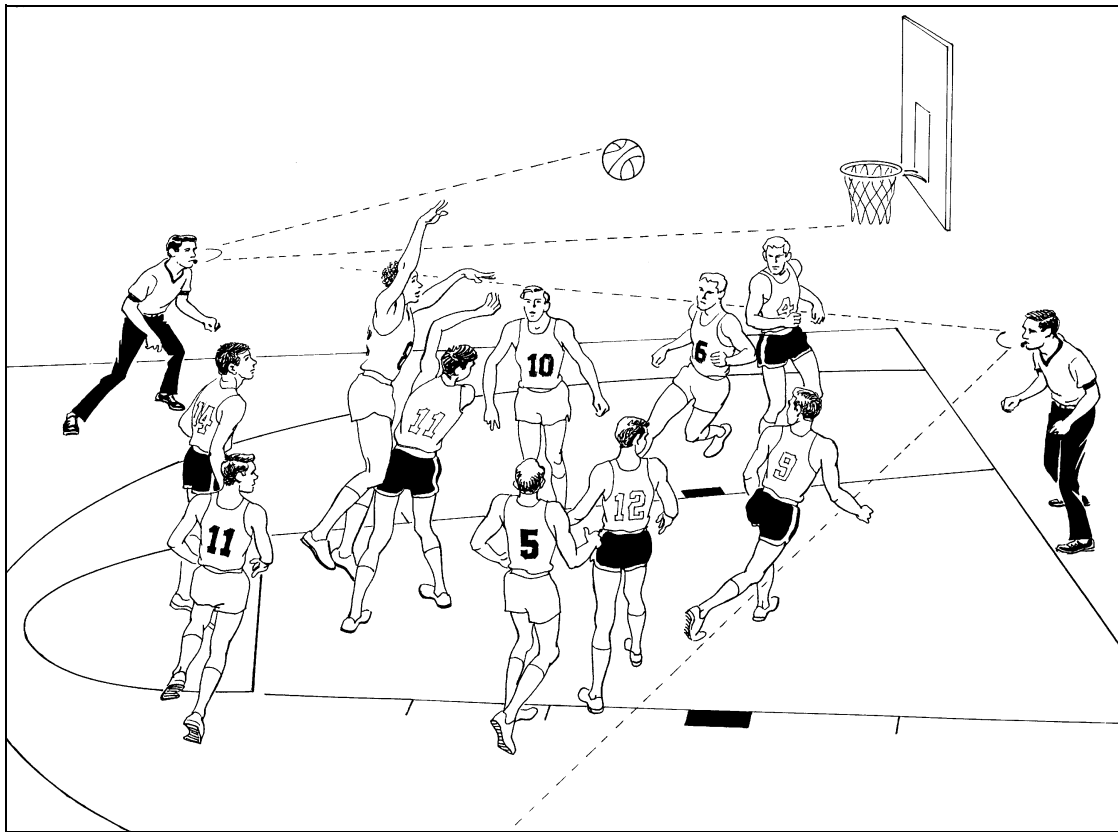


Diagram 29

4.1 Officiating techniques

The eyes of the officials should constantly be roving, trying to cover the whole floor, always knowing where all ten (10) players are located.

Depending on the position of the ball, one official must be looking at the action away from it.

Knowing where the ball is located is not the same as watching the ball.

Whenever both officials blow their whistles simultaneously, **the one who is nearest to the play will normally take the call.** Establishing eye contact with each other will help to avoid two different calls. Whenever both officials blow their whistles for a foul, they should not make any immediate movement. Each official must be aware of his partner, just in case he has committed himself to another decision.

There is no distinction between the referee and the umpire when it comes to taking decisions on fouls or violations. Younger or less experienced officials have just as much authority to take decisions as their veteran colleagues. Cooperation and teamwork is vital. They set their standards by accepting their responsibilities.

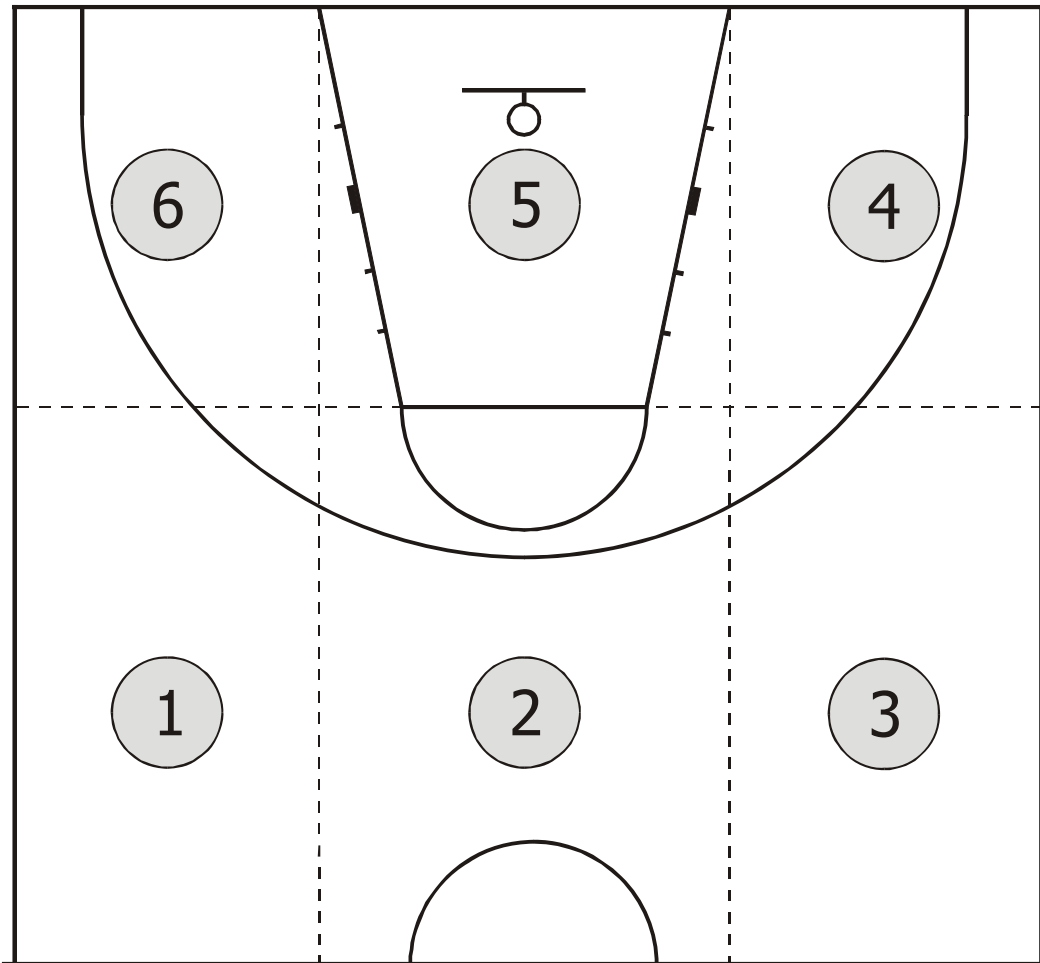


Diagram 30

4.2 Division of responsibilities on the court

Modern officiating requires the two (2) officials to work in cooperation with each other, one official taking responsibility for on-the-ball and the other for off-the-ball coverage.

In order to achieve proper coverage, the two (2) officials should seek to obtain the best possible position to judge the play, using the system of mechanics contained in this manual **as a guideline**.

To simplify this, each half court has been divided into rectangles, numbered 1 to 6 (Diagram 30).

In the first instance, we will focus on the position of the trail official in relation to the ball, indicating the occasions when he has primary responsibility for on and off-the-ball coverage, as well as providing an insight into certain officiating techniques.

This will be followed by an analysis of the positioning of the lead official and his responsibilities.

The final section will review the work of the two (2) officials and their respective coverage and duties.

4.3 Trail official - positioning and responsibilities

The trail official should be, under normal circumstances, behind the play. He should take a position slightly behind and to the left of the ball and approximately 3 – 5 m away.

In Diagram 31 and Diagram 32, the ball is located in rectangle 1. The trail official is responsible for watching play around the ball, in particular the player dribbling, shooting or passing the ball and the defensive player or players guarding him. When the ball is in this area of the court, the trail official has primary responsibility for on-the-ball coverage.

In Diagram 33 and Diagram 34, with the ball in rectangle 2, the trail official again is responsible for play around the ball.

In Diagram 35, the ball is located in rectangle 3, to the trail official's far right. Again he has primary responsibility for on-the-ball coverage. In this situation, however, he will need to find the best possible position to cover the action and should also make the out-of-bounds decisions nearest to the sideline to his right.

In Diagram 36, the ball is located in rectangle 3 near to the three-point line. In the majority of cases the ball will penetrate into rectangles 4 or 5 on a shot, pass or dribble. **In order to anticipate the action, the trail official must anticipate a move toward his left in order to cover the play away from the ball.**

He will sometimes need help from the lead official to cover three-point field goal attempts, especially when the defensive player blocks his angle of vision. If a three-point field goal attempt is taken by a player straddling the free-throw line extended (rectangle 3 and 4), the trail official shall take responsibility for the attempt.

The trail official does not have primary responsibility for the endline or sideline to his right, but there will be occasions when he is required to help his partner with the throw-in decision when the ball goes out-of-bounds.

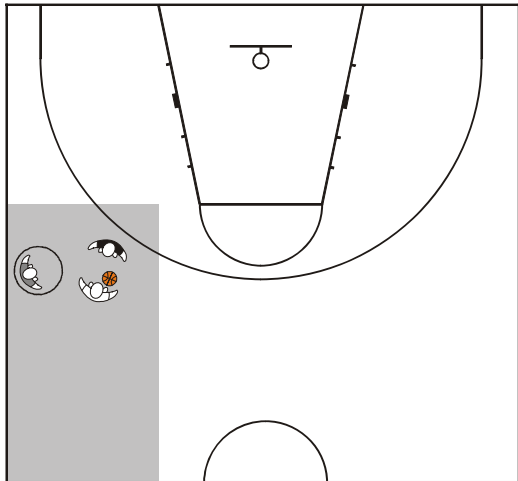


Diagram 31

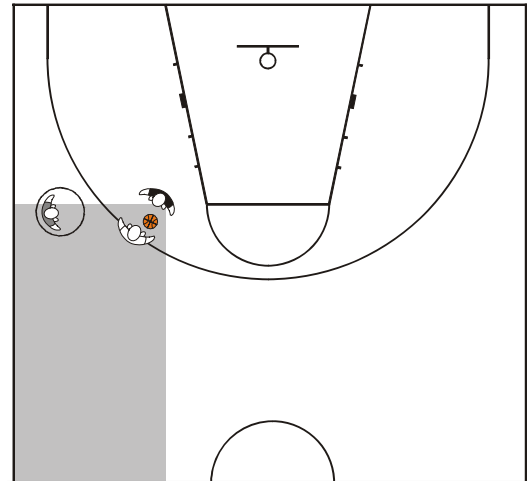


Diagram 32

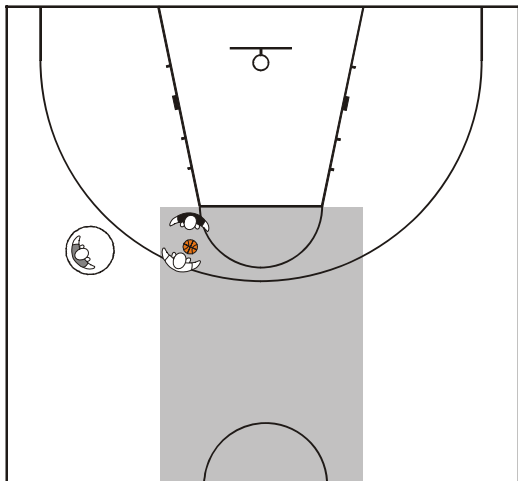


Diagram 33

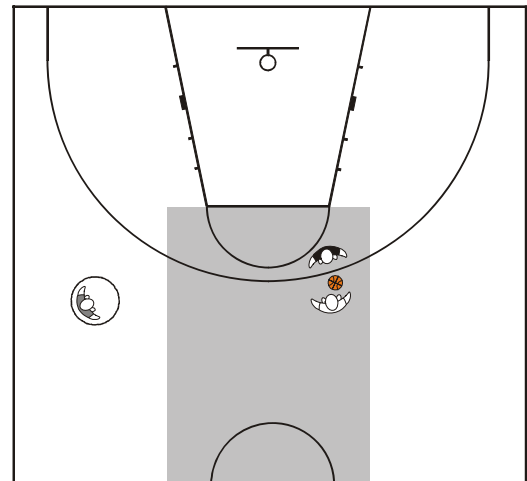


Diagram 34

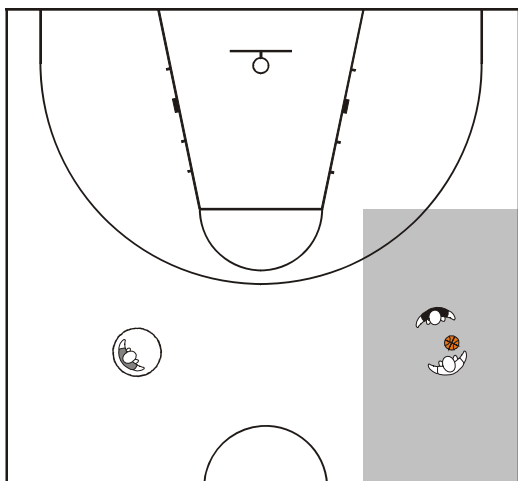


Diagram 35

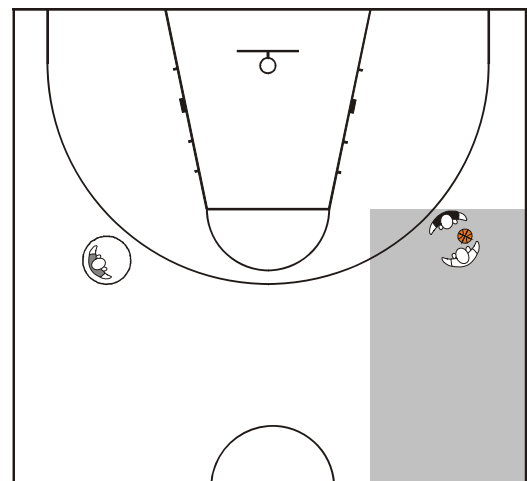


Diagram 36

Position of trail official

With the ball in rectangle 4, in the corner furthest away to his right (Diagram 37 and Diagram 38), between the free-throw line extended and the endline, the trail official does not have responsibility for the ball and the play around it.

It is his primary task to watch situations away from the ball.

His main responsibility is the low post area on the weak side (side away from the ball), paying careful attention to possible illegal screening situations.

The most important principle is that the trail official must penetrate to the free-throw line extended (approximately) when the ball penetrates towards the basket or the endline on a pass, dribble or shot, in order to better find the spaces between the players.

In Diagram 39 and Diagram 40, the ball is in the restricted area (rectangle 5). This is the one occasion on which both officials will be looking at play around the ball, especially in shooting situations.

The trail official takes responsibility for the flight of the ball, watching to see whether or not it enters the basket, as well as offensive and defensive goal tending and interference. It is also his duty to be especially vigilant on rebound situations, paying particular attention to the perimeter players who may be trying to obtain the ball from an unfavourable position.

In Diagram 41, the ball is located in rectangle 6, in the two-point field goal area. The trail official is primarily responsible for the ball. However, if the ball goes to the basket, especially along the endline, the lead official will assume responsibility for play around the ball. He must pay particular attention to the high and low post areas.

In Diagram 42, the ball is still in rectangle 6 and in the three-point field goal area. The trail official watches the ball and the play around it, especially when a shot for a field goal is attempted.

The trail official is also responsible for giving the direction of play for the throw-in following the ball going out-of-bounds nearest to the sideline on his left.

It is vitally important to have close cooperation between the two (2) officials at all times. This is especially the case when the ball is in rectangle 6. It is strongly recommended that whenever the ball passes into a new area, according to the rectangles, and there is a change of responsibility for on-the-ball coverage, the trail official should establish the position of his partner.

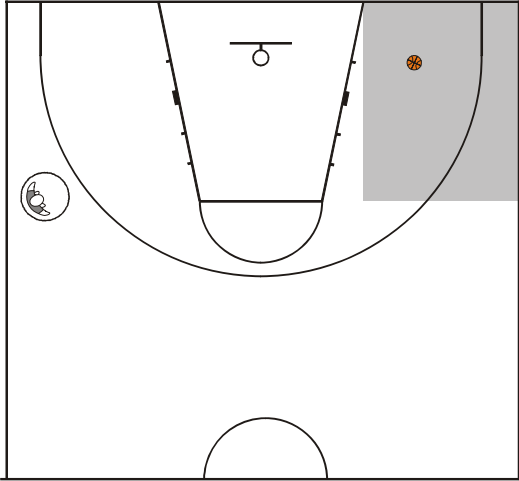


Diagram 37

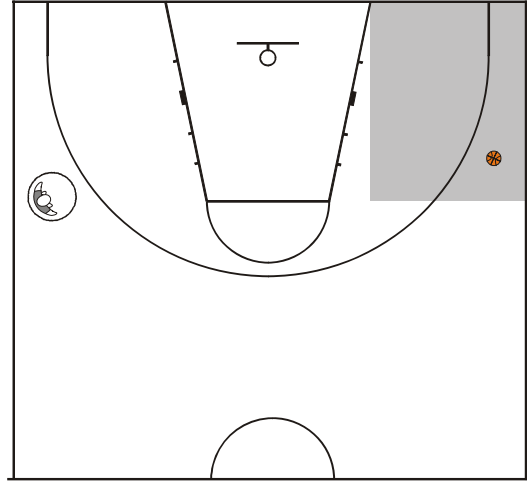


Diagram 38

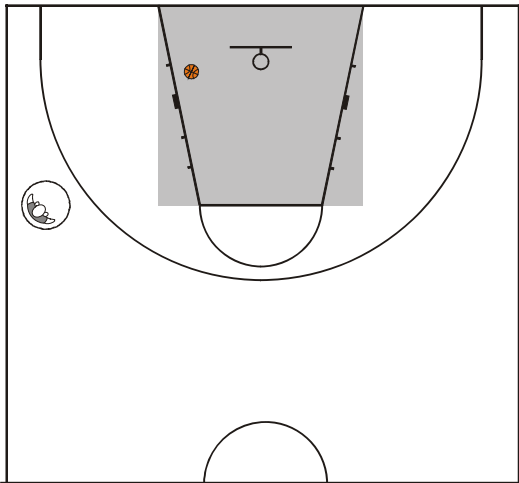


Diagram 39

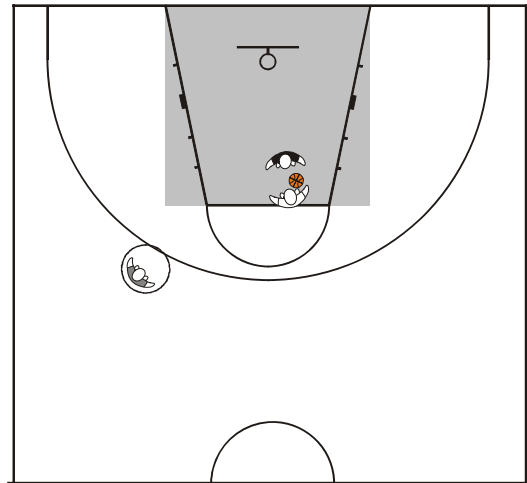


Diagram 40

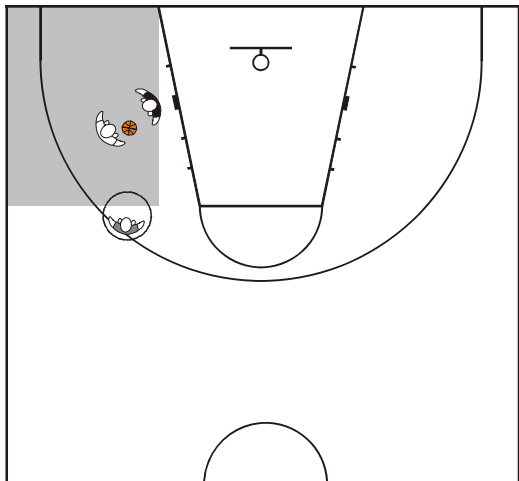


Diagram 41

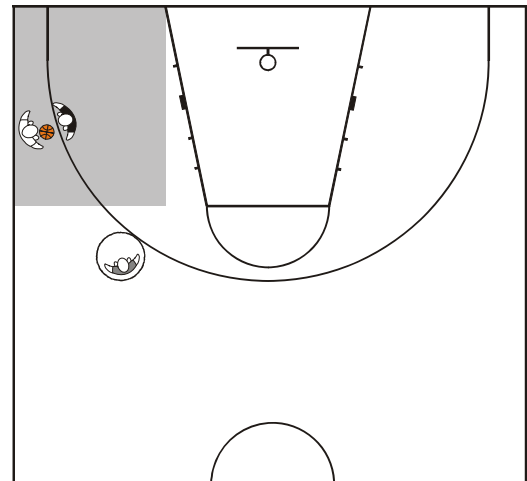


Diagram 42

Position of trail official

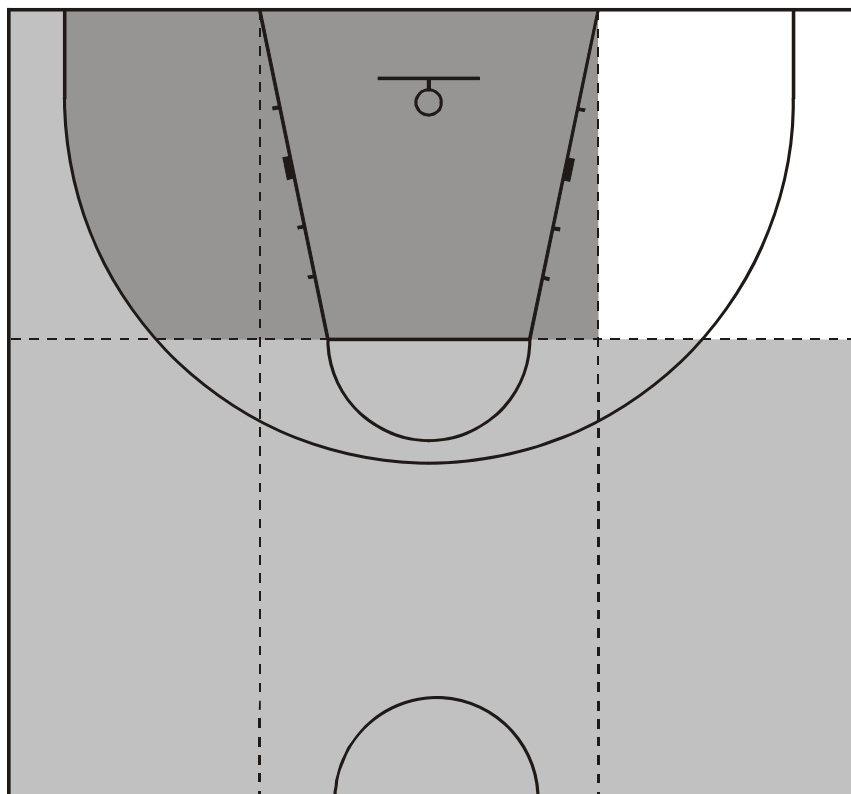


Diagram 43

The trail official is responsible for on-the-ball coverage when the ball is located in the shaded areas (Diagram 43). The dark shaded area indicates the area of shared responsibility with the lead official.

The primary duties **for the trail official** include:

1. Two and three-point field goal attempts including judging whether time had expired at the end of playing time for a period or extra period or a twenty-four second violation had occurred.
2. Goal tending and interference.
3. Rebounding situations, especially over-the-back situations.
4. Low post area, especially on weak side (away from the ball).
5. Fouls away from lead official.
6. Travelling violations (trail official has the best angle of vision).
7. Twenty-four second device.

Remember the principles of mechanics:

1. The trail official **must** always move when the ball moves.
2. Box-in, that is, keep all the players between the two (2) officials.
3. Penetrate when the ball penetrates below the free-throw line extended on a shot, pass or dribble.
4. **Look for the spaces** between the players.



4.4 Trail official - practical advice

1. When the play is moving up the court, keep slightly behind and generally to the left (although, sometimes to the right) of the ball, approximately three (3) to five(5) m away, looking for the spaces between the players. This will help you maintain a wider angle of vision on the play and improve your court coverage.
2. You are responsible for the sideline to your left, the centre line (the possibility of the ball being returned from front to backcourt) and the twenty-four second device. Pay particular attention to the twenty-four second device whenever the ball goes out-of-bounds.
3. Inform the teams of the number of seconds remaining should the offensive team have fewer than eight (8) seconds to move to the frontcourt from a throw-in in its backcourt.
4. **If the ball is brought up the court on your far right and the dribbler is closely guarded, you must go as far as it is necessary to cover the player properly.** You then return to the normal trail position as soon as the situation permits it.
5. You are primarily responsible for the flight of the ball in all shooting situations, including goal tending and interference. Watch the feet of the shooter in relation to a three-point field goal attempt, especially when close to the three-point line. Ensure that you are looking between the players to determine responsibility for any eventual contact.
6. **Whenever the ball penetrates** towards the endline or the basket on a shot, dribble or pass, **you must also penetrate** (but not beyond the free-throw line extended). This will enable you to help your partner, especially with players coming over the backs of opponents in order to obtain a rebound illegally.
7. Whenever the ball is passed or released for a shot for a field goal, observe the actions of the defensive player before looking at the ball.
8. When your partner looks for assistance on an out-of-bounds play, be prepared to give it immediately. Establish the method of communication for such a situation during your pre-game conference.
9. In transition from trail official to lead official, do not turn your head away from the play and look down court, keep your eyes focused on the play and the players at all times by looking over your shoulder.
10. When you are responsible for on-the-ball coverage, especially in one-on-one situations, look for the spaces between the players.

"Go where you need to go in order to see what you need to see."

4.5 Lead official - positioning and responsibilities

The lead official should be, under normal circumstances, ahead of the play. He must get down the court as quickly as possible, allowing the play to come towards him. **The lead official must always be on the move.**

Having reached the endline, he will normally move between the three-point line to his left and **no further** than the far edge of the restricted area to his right. There is no need to move beyond these parameters.

For **most** situations, the officials **must** use the "**boxing-in**" principle, always having all ten (10) players **between** them. The officials do **not** have to be diagonally opposite.

In Diagram 44 and Diagram 45, the ball is in rectangle 1. The lead official positions himself so that the ten (10) players are between him and his partner. His main responsibility is the play away from the ball. He should pay particular attention to any possible illegal screens.

In Diagram 46 and Diagram 47, the ball is located in rectangle 2. Again the lead official has primary responsibility for off-the-ball coverage. By keeping his hips open to the play (feet in line with the endline), he will be able to anticipate any possible movement of the ball towards the basket.

When the ball is in rectangle 3 (Diagram 48 and Diagram 49), the lead official again takes off-the-ball coverage. He should always know where the ball is in order to give help, when necessary, to his partner on a three-point field goal attempt. There is no need to move beyond the three-point line to his left. With the ball in rectangle 3, the lead official watches the players in the low post area.

The modern game involves contact between players in the low post area. It is the duty of the lead official to ensure that this contact does not become excessive and rough, resulting in the game getting out of hand. When a player, attempting to take a new position on the court, is illegally prevented from doing so, it is a foul.

Throughout these illustrations, which show the ball in rectangles 1, 2 and 3, between the centre line and the free-throw line extended, the lead official "**boxes**" the players in, and is primarily responsible for off-the-ball coverage.

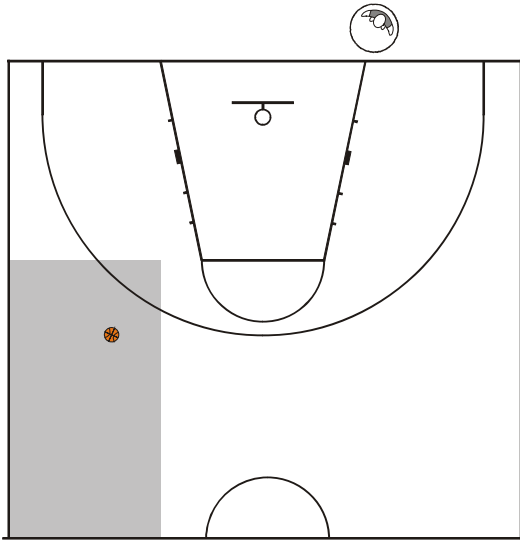


Diagram 44

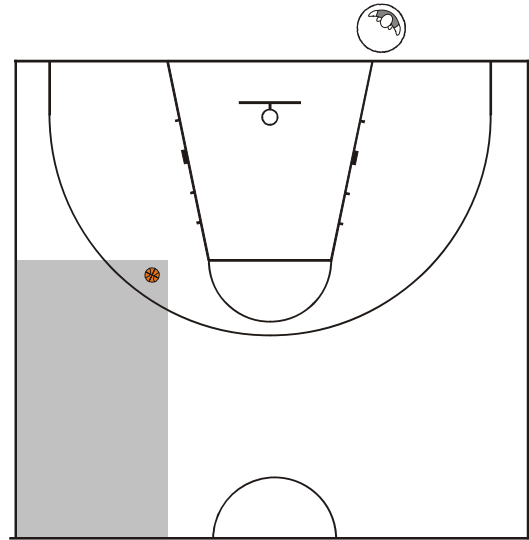


Diagram 45

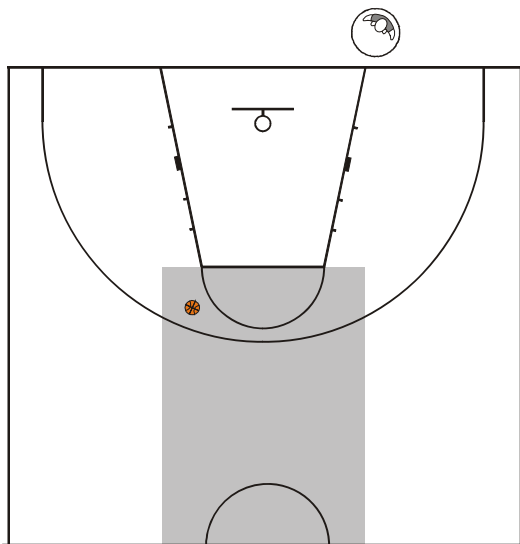


Diagram 46

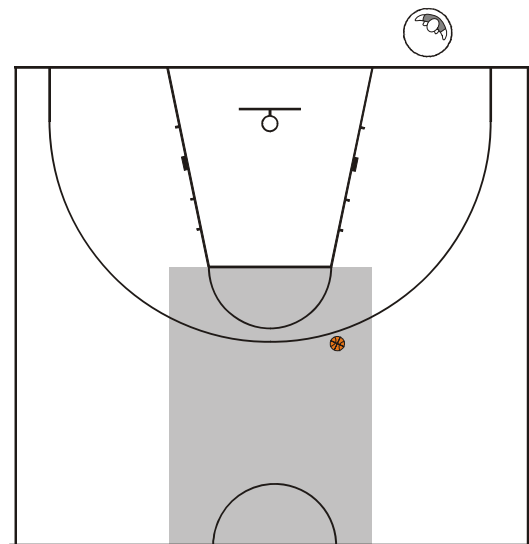


Diagram 47

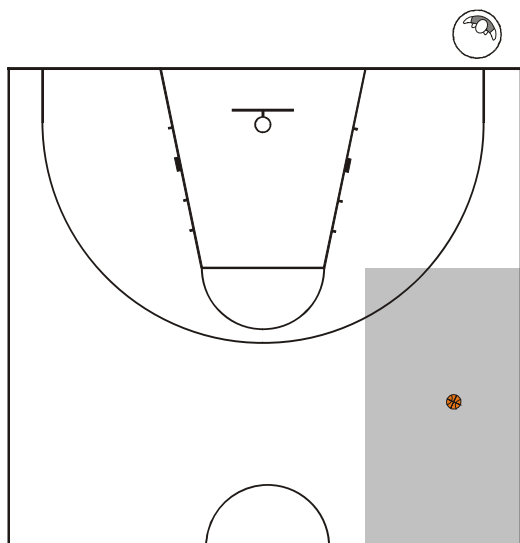


Diagram 48

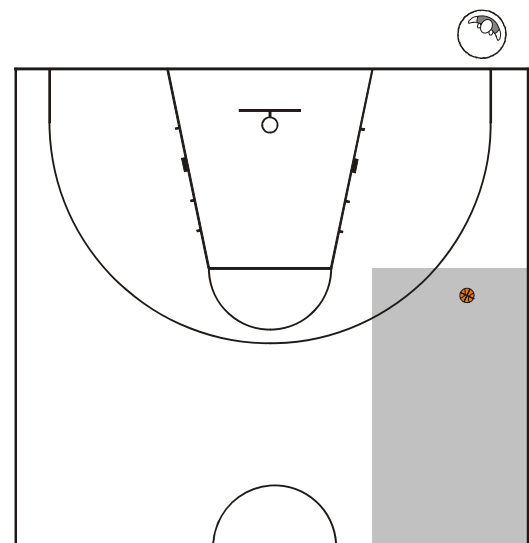


Diagram 49

Position of Lead official

In Diagram 50 and Diagram 51, the ball is located in rectangle 4. The lead official now positions himself with his hips open to the play (court) and is responsible for play immediately around the ball.

He should not move to his left beyond the three-point line.

From here he will still be in a good position to make judgmental decisions when the ball goes out-of-bounds near the sideline to his left. He will also be able to indicate to his partner when a three-point field goal is attempted from this area.

Although he is responsible for on-the-ball coverage, his secondary duty with the ball in rectangle 4 is to watch the players in the low post area on the side of the ball.

When the ball moves into the restricted area, rectangle 5, (Diagram 52 and Diagram 53), the lead official watches the play directly around the ball.

As a guideline, he should watch the defensive player in all shooting or one-on-one situations.

As the lead official and the closer to the play, he is in the best possible position to make judgmental decisions on all contact situations involving the shooter and the defensive player guarding him. Incidental contact should be ignored particularly when a player drives to the basket and scores. It is not his duty to watch the flight of the ball.

In Diagram 54, with the ball inside the two-point field goal area in rectangle 6, the lead official moves over to cover the play around the ball, but always keeps his hips open to the play (court).

He does not need to move beyond the edge of the restricted area to his right.

However, when the ball is in the three-point field goal area, rectangle 6, (Diagram 55), the lead official has the primary task for off-the-ball coverage. In particular, he watches the low post areas as well as all other players away from the ball, especially those involved in screening situations.

The lead official is responsible for on-the-ball coverage when the ball is located in rectangles 4 and 5. He is also responsible for rectangle 6 when the ball is in the low post area or the player is moving towards the basket on a drive. The lead official should referee the defensive player when the offensive player with the ball in these areas is attempting to shoot or dribble.

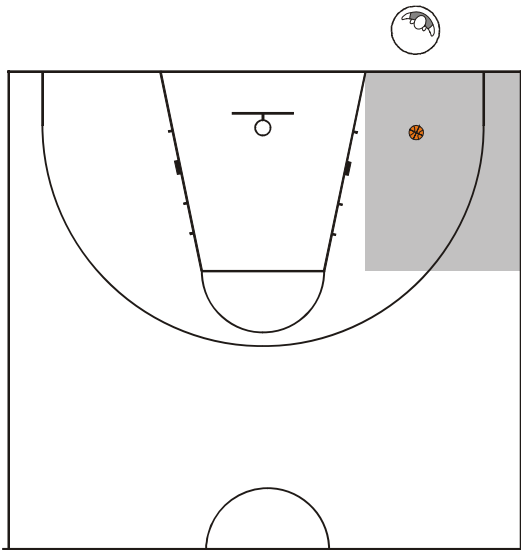


Diagram 50

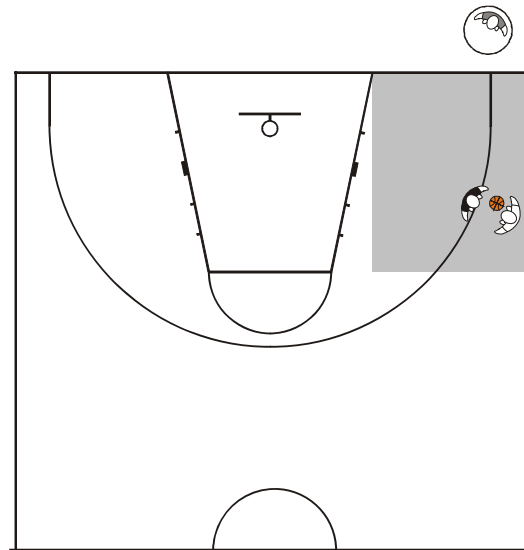


Diagram 51

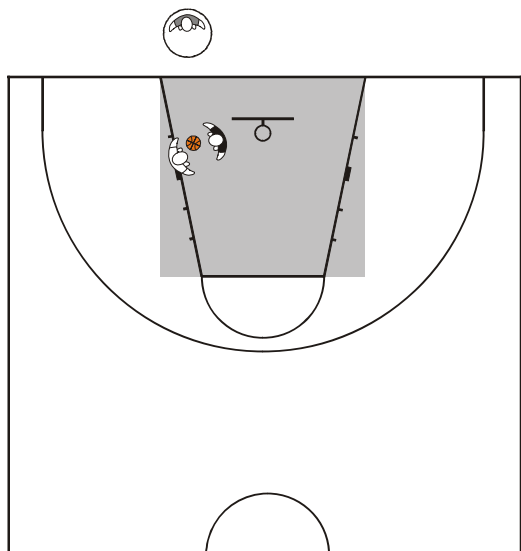


Diagram 52

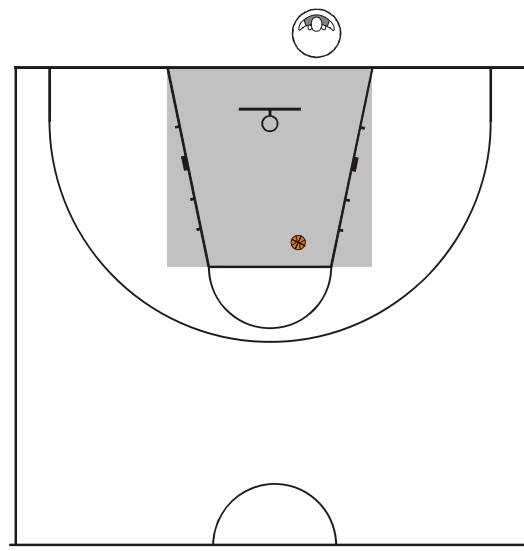


Diagram 53

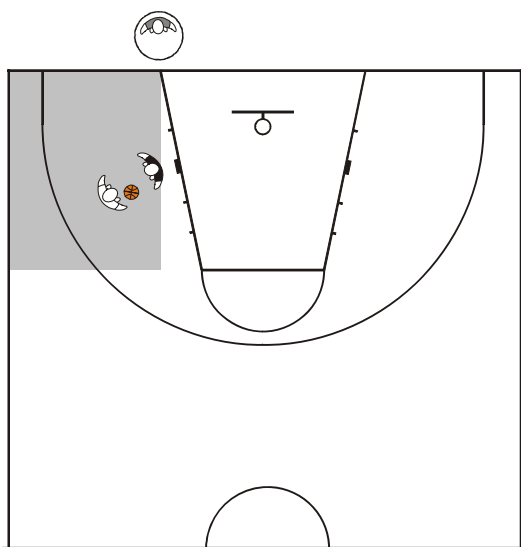


Diagram 54

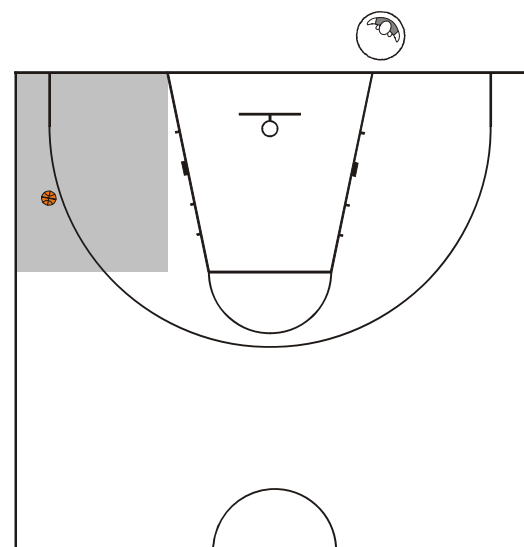


Diagram 55

Position of Lead official

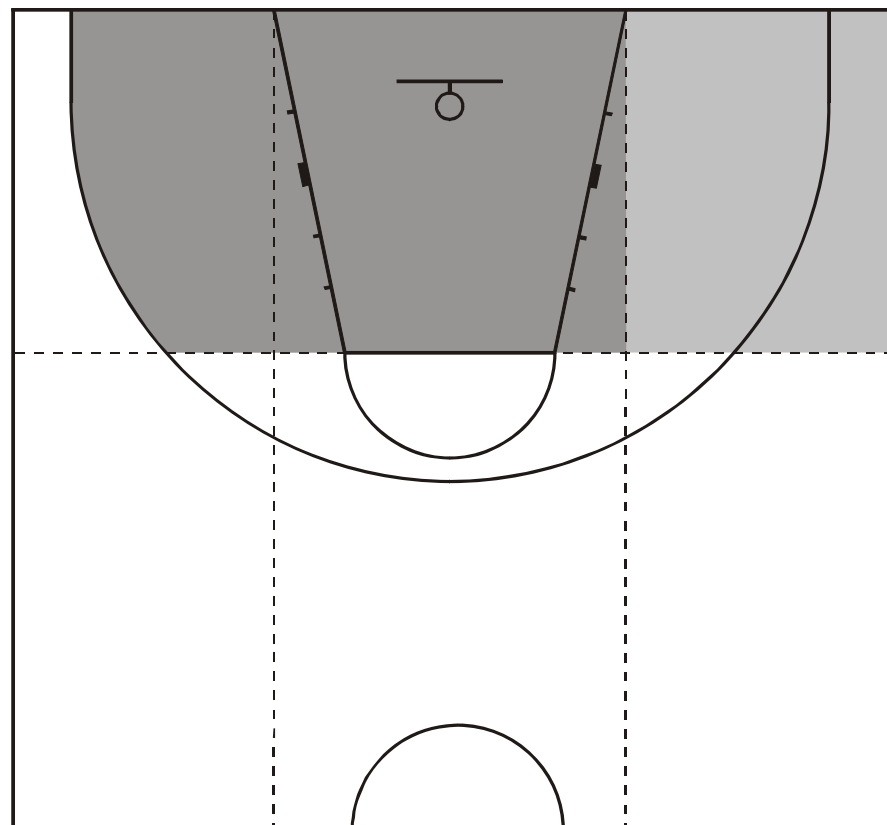


Diagram 56

The lead official is responsible for on-the-ball coverage when the ball is located in the shaded areas (Diagram 56). The dark shaded area indicates the area of shared responsibility with the trail official.

The primary duties for the lead official include:

1. Pivot/post play.
2. Play under the basket.
3. Fouls away from trail official.
4. Drive to the basket on lead's side of the court.

Remember the principles of mechanics:

1. **Always** move when the ball moves.
2. Box-in all the players between the officials' field of vision.
3. Look for the spaces between the players.
4. Step back from the endline to get a wider angle of vision.



4.6 Lead official - practical advice

1. You must get down the court as quickly as possible, allowing the play to come towards you. Always keep on the move. Strive for the best possible position.
Always know where the ball is, even when you are primarily watching play away from the ball.
2. You are responsible for the endline and the sideline to your left. Be prepared to help with twenty-four second device situations.
3. Be ready to assist your partner with three-point field goal attempts, particularly when the ball is near rectangle 4.
Always establish eye contact with your partner.
4. Pay particular attention to the post play and the amount of physical contact you will tolerate. Any rough play is your responsibility and you should penalise it. Recognise whether or not the player is trying to move into a new position or is being illegally prevented from doing so by an opponent.
5. Try to take a 'deep endline' position (2 metres if possible) to get the best possible angle. A wider angle means better vision and, in turn, better decisions. To achieve this, you must **always** be on the move. Penetrate to the basket when the ball is dribbled from rectangle 4 to 5 to 6. See the 'start' and 'end' of the drive.
6. At the end of playing time for a period or extra period, do not indicate whether the field goal shall count or not. This is the primary responsibility of the trail official.
7. Avoid penalising incidental contact that does not affect the play, especially when a player drives to the basket and scores. Similarly, do not call an offensive foul because a defensive player puts on a **theatrical display and falls to the floor**.
Calls should be restricted to contact which has a direct effect on the play (unless they are unsportsmanlike).
8. When your partner looks for assistance on an out-of-bounds play, be prepared to give it immediately. Establish the method of communication for such situations during your pre-game conference.
9. In the event of a pressing defence when three (3) or more defensive players are in their opponents' backcourt, you must assist the trail official with his coverage of the play.
In this situation, delay your progress up the court in order to help.

"Go where you need to go in order to see what you need to see."

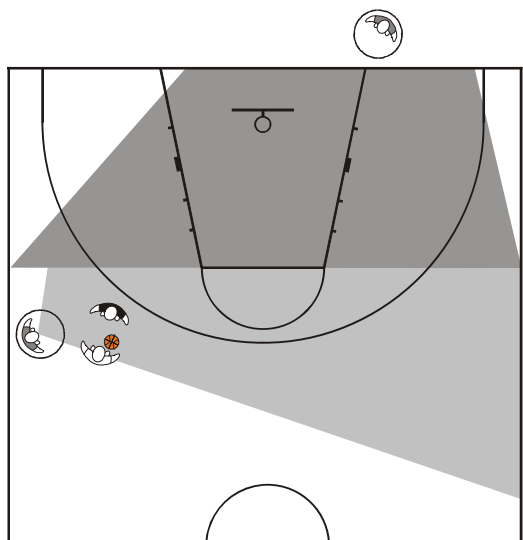


Diagram 57

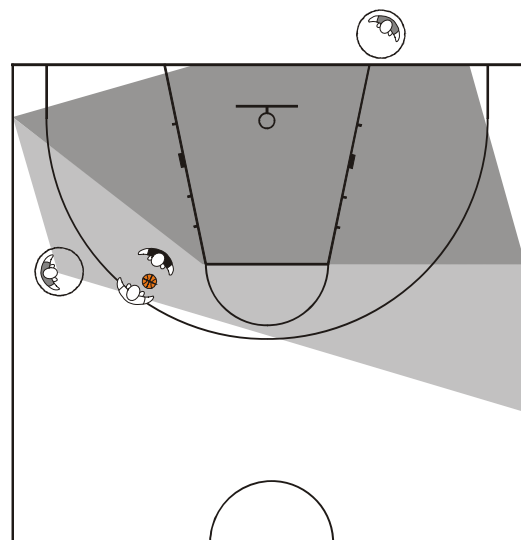


Diagram 58

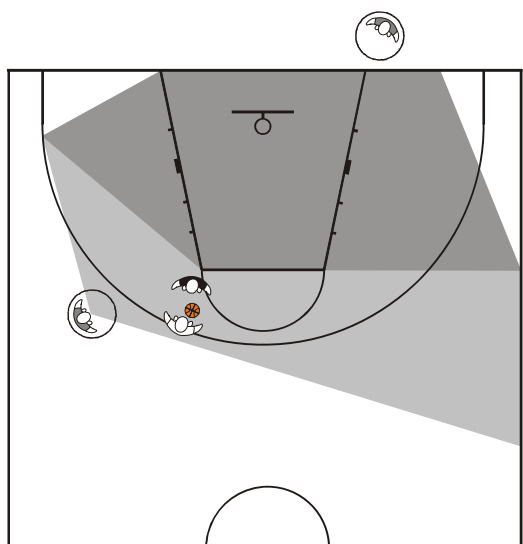


Diagram 59

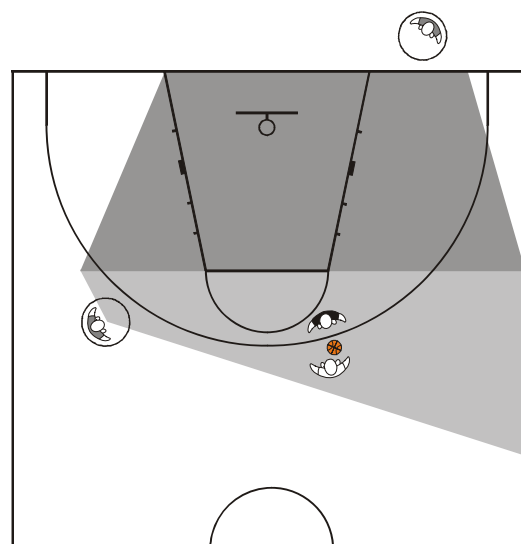


Diagram 60

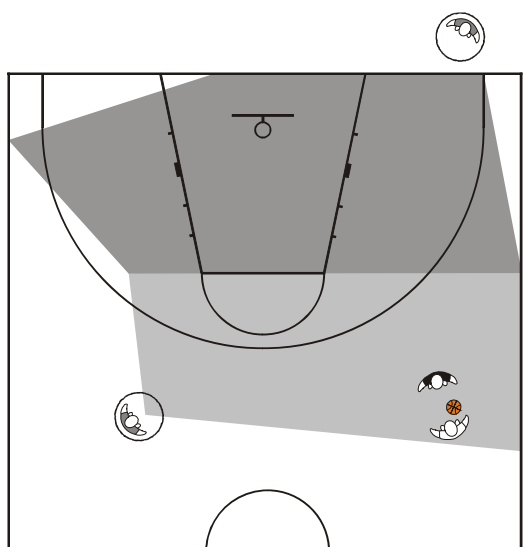


Diagram 61

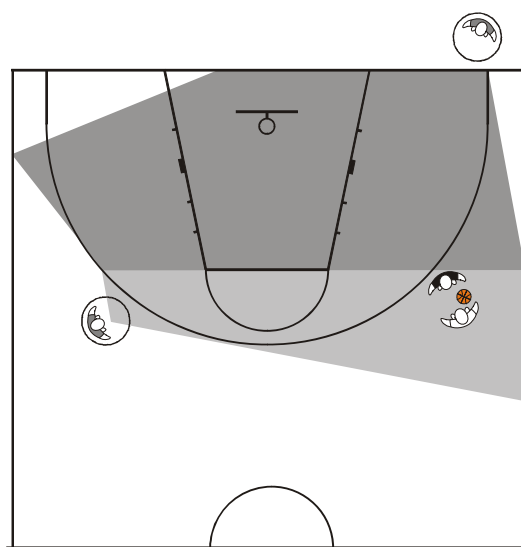


Diagram 62

Positioning of both officials

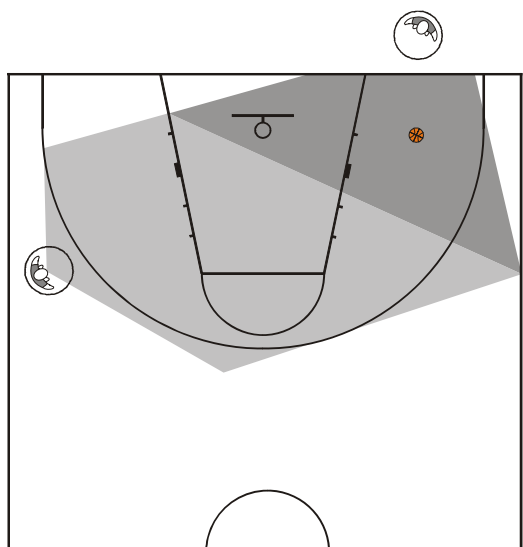


Diagram 63

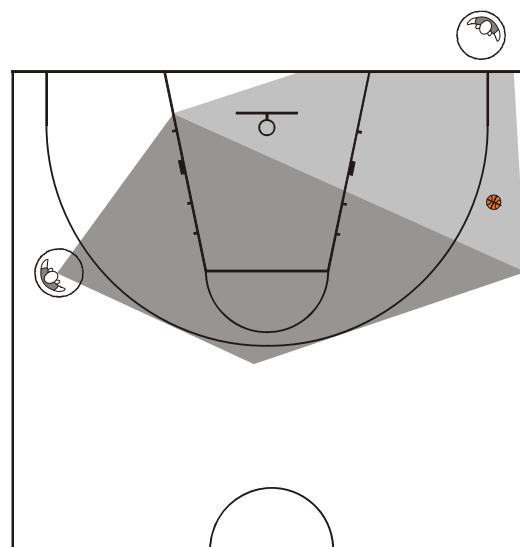


Diagram 64

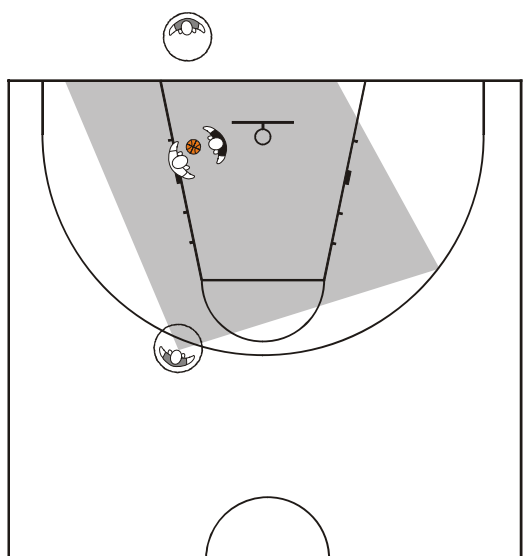


Diagram 65

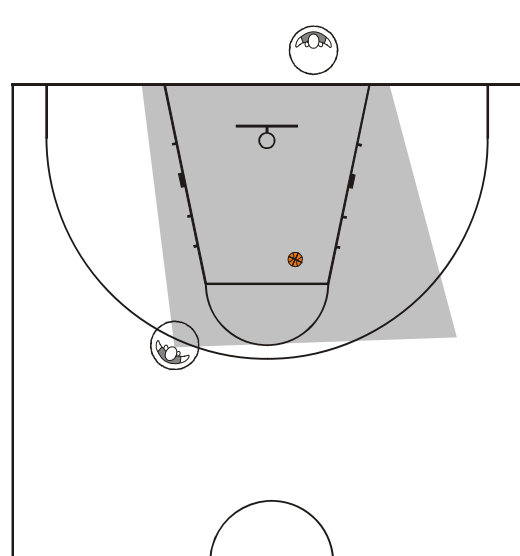


Diagram 66

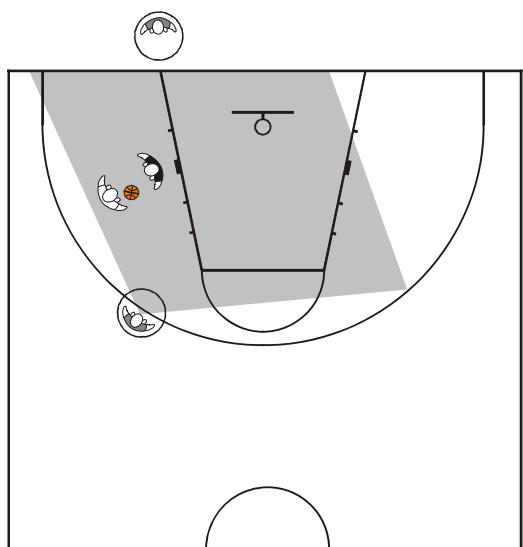


Diagram 67

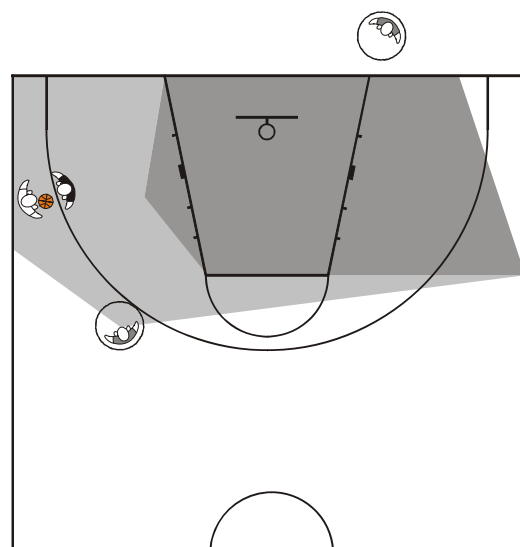


Diagram 68

Positioning of both officials

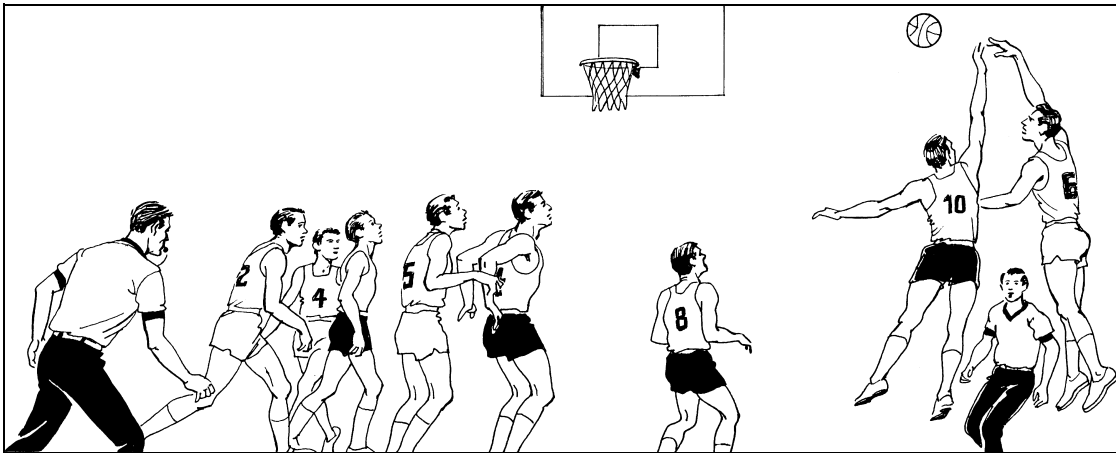


Diagram 69

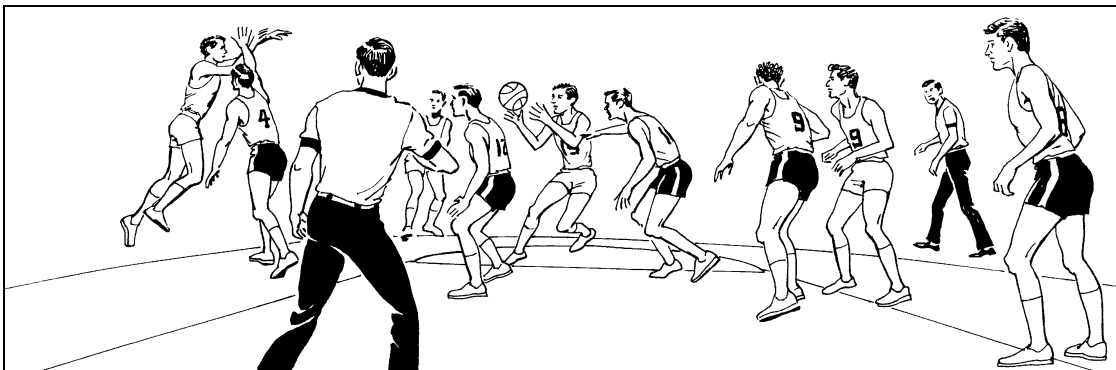


Diagram 70

4.7 Trail and Lead official - Further practical advice

1. Watch players' hands and arms during a shot for a field goal. Remember the principle of the cylinder and the rights of both players.
Incidental body contact that does not affect the play should not be penalised as a foul. Make certain that you see the complete action.
2. During post or pivot play, remember the defensive player has the same right to a legal position as the offensive player. Fouls should be called when the contact has a direct effect on the play. Elbowing, backing in, pushing, holding off with the hands or elbows are fouls. Too much rough and violent post or pivot play can lead to the officials losing control on the game.
3. In any screening situation, make sure that the player setting the screen is stationary when the contact occurs. Pay particular attention to the extended leg, knee or elbow.
Some players will try to fake fouls by purposely (theatrically) falling down heavily upon incidental contact.
Make sure that you call what you have actually seen.

The primary duties for both officials include:

1. Off-the-ball coverage.
2. Screens, both on and away from the ball.
3. Illegal use of hand(s).
4. Action in the restricted area.

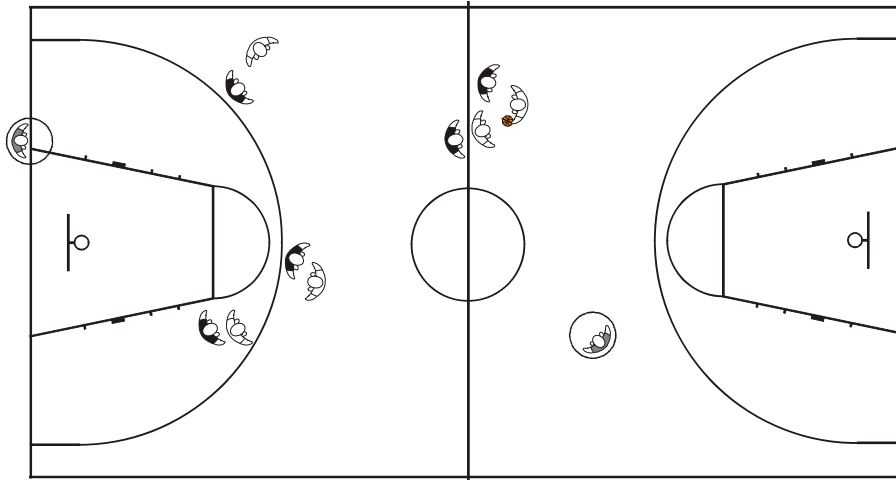


Diagram 71

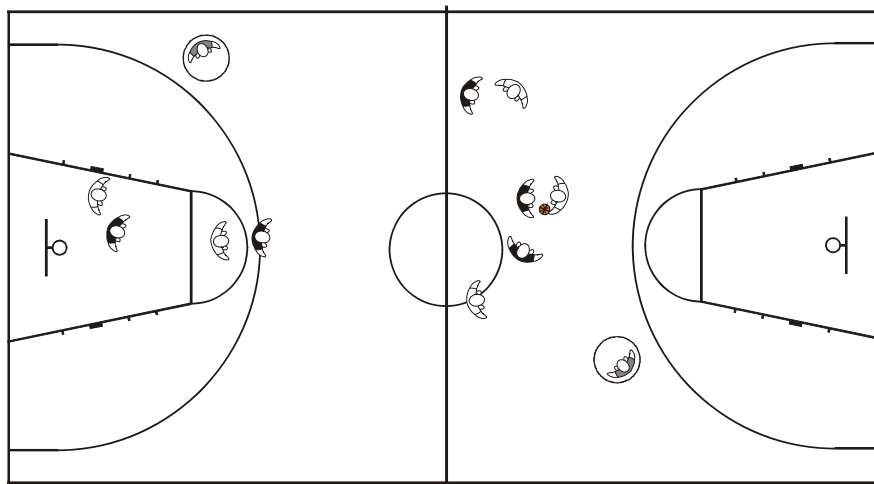


Diagram 72

4.8 Pressing defences

Pressing defences can create difficulties for the officials. These entail disruption of their normal court coverage and the situation requires great concentration and cooperation.

If there are three (3) or more defensive players in the opponents' backcourt during a pressing defence, the lead official should **delay** his attempt to reach the endline in order to help his partner cover the play.

As soon as the ball comes into the frontcourt, the lead official moves to his normal position on the endline.

Diagram 71 shows a pressing man-to-man defensive coverage. Only one defensive player is in the opponents' backcourt and therefore the lead official must watch all players in the half of the court nearer to him.

The trail official should get as close as necessary to the play, watching carefully for possible fouls and violations.

In Diagram 72, three (3) defensive players are in the opponents' backcourt. To help his partner adequately cover this press situation, the lead official will delay his advance and stay on the sideline until the ball crosses the centre line.

The officials should do their utmost to ensure that any turnover (change of possession) following a pressing defence has been the result of legal defensive play. Illegal contact should always be penalised as a foul.

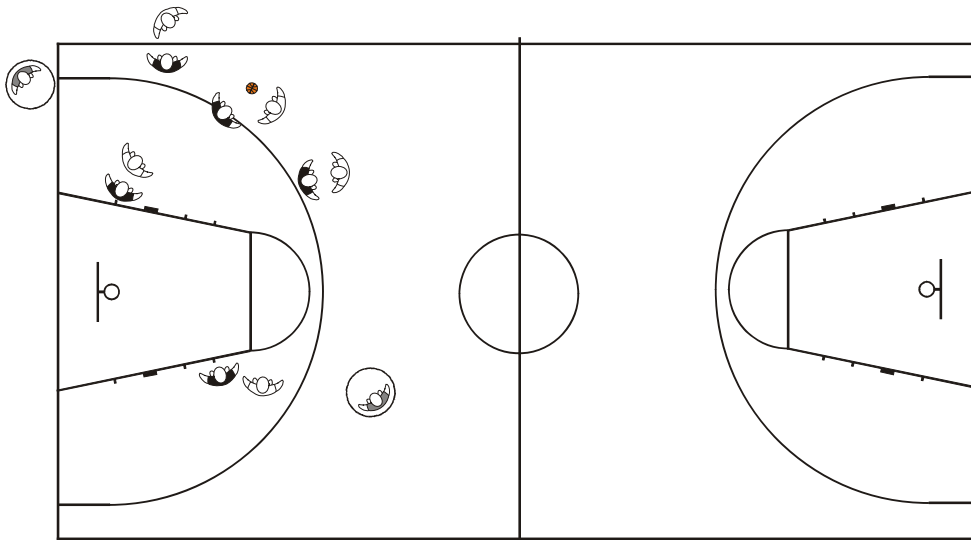


Diagram 73

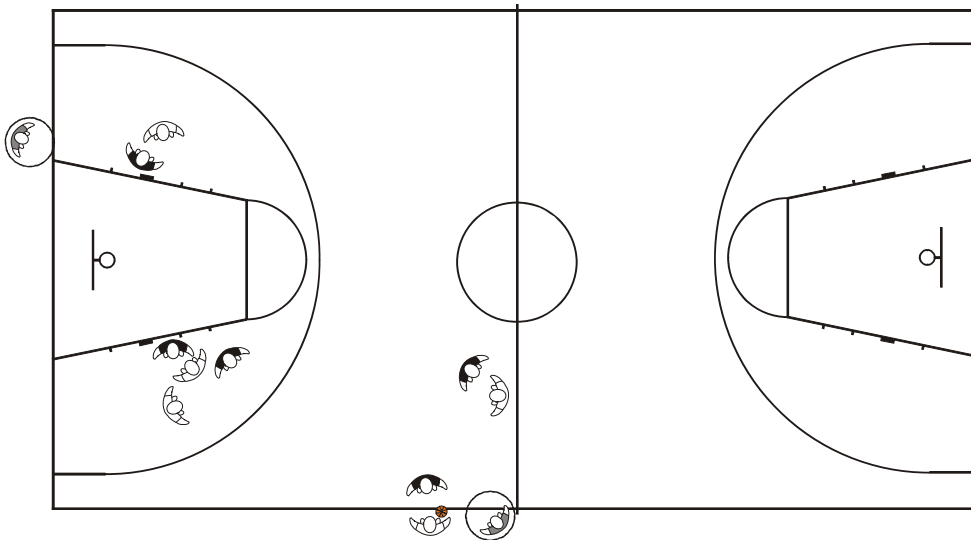


Diagram 74

4.9 Throw-in with pressing defence

In Diagram 73, the offensive team is faced with a pressing defence.

The lead official, after handing the ball to the player taking the throw-in, moves immediately to a position on the endline where he can carefully observe all the players in the immediate vicinity of the throw-in, including the player throwing in the ball.

This official is directly concerned with the post play, the tight defensive pressure and other action around the nearest pass receivers. He also ensures that the rule provisions concerning the throw-in are followed.

The trail official penetrates because the ball is in a penetrated position and watches the players furthest away from the ball.

In Diagram 74, the lead official takes responsibility for the post play and possible screens, watching the play away from the ball.

The trail official, having handed the ball to the player taking the throw-in, observes the action around him and the nearest pass receivers.

Note the use of the "boxing-in" principle.

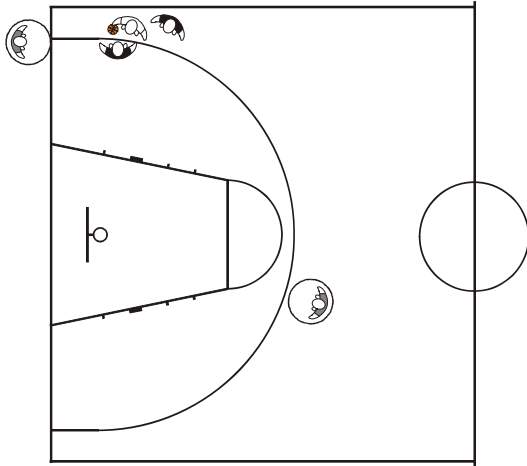


Diagram 75

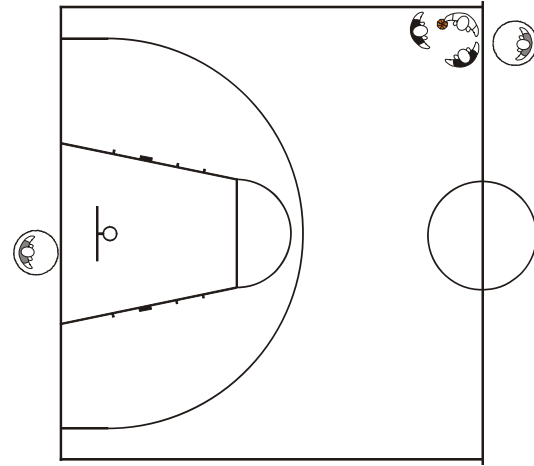


Diagram 76

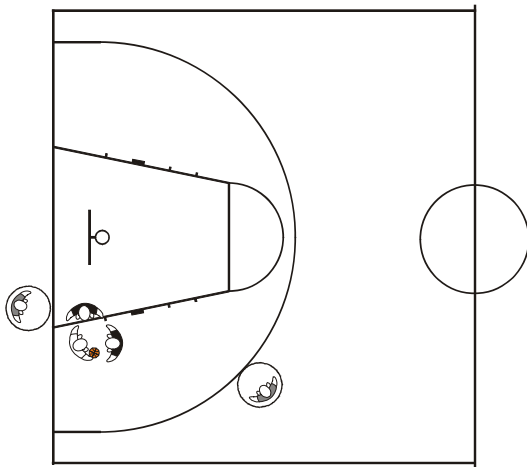


Diagram 77

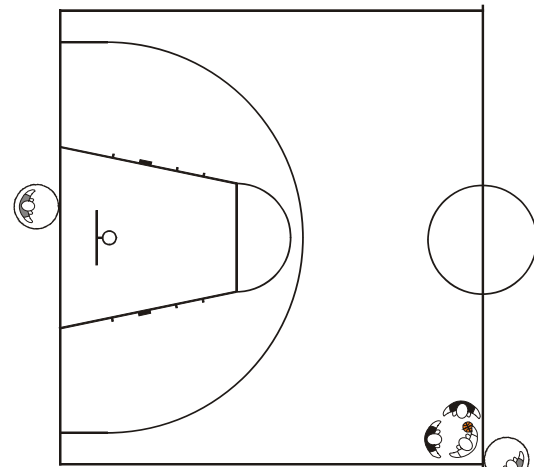


Diagram 78

4.10 Trapping defences

The 'Closely Guarded Player' rule rewards good defensive play.

When a closely guarded player (within 1 normal step of a defensive player(s)) holds the ball, without passing, shooting or dribbling it, for a period of 5 seconds, it is a violation.

All officials must be familiar with the types of defensive play in which the defence establishes numerical superiority on the player holding the ball.

In Diagram 75 and Diagram 76, the lead official is responsible for the action around the player holding the ball.

The trail official watches the play away from the ball, but is always prepared to assist his partner on any double team.

In Diagram 77 and Diagram 78, the trail official moves as close to the play as is necessary, watching for possible fouls or violations.

The lead official, using the "boxing-in" principle, watches the play away from the ball.

5 Out-of-bounds and throw-in situations

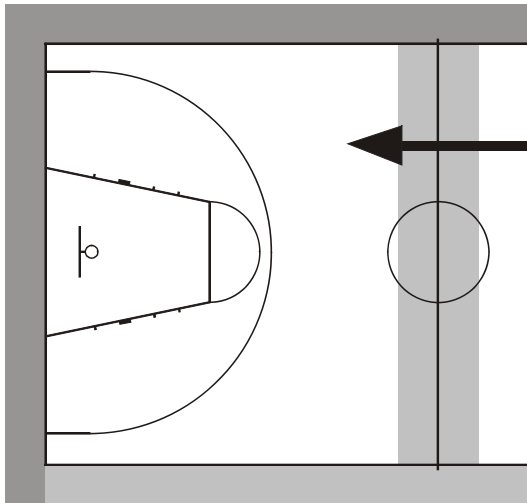


Diagram 79

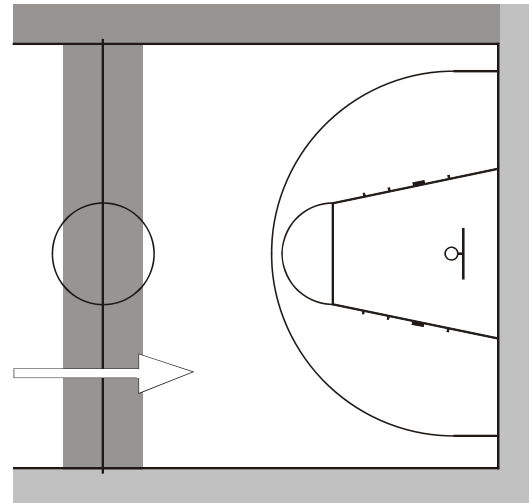


Diagram 80

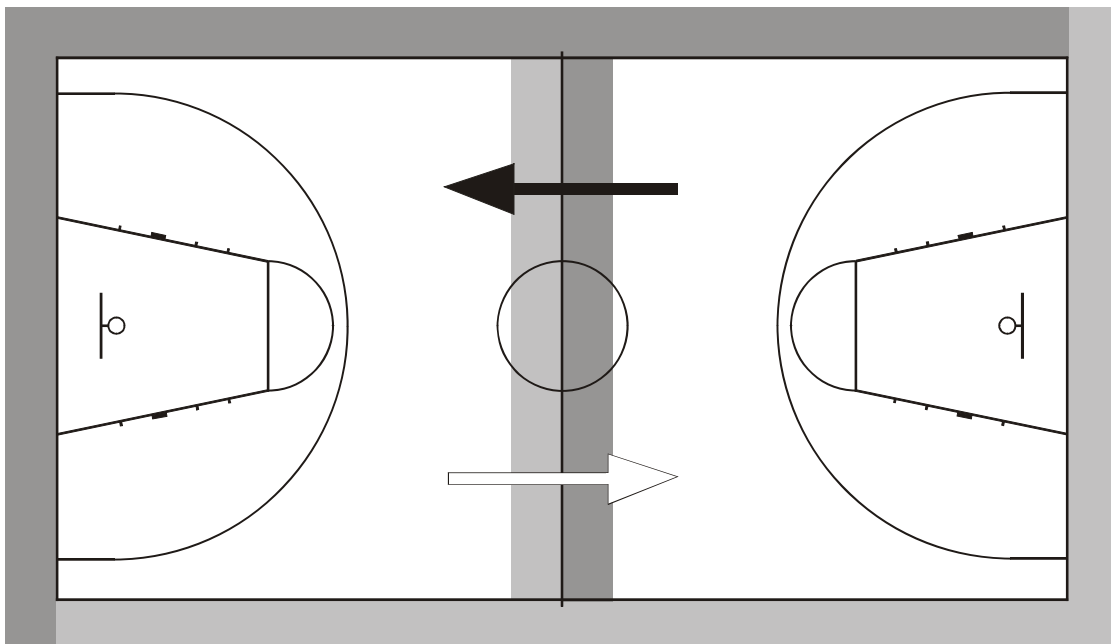


Diagram 81

5.1 Responsibility for the lines

Generally (Diagram 79 and Diagram 80), primary responsibility for the out-of-bounds decisions are as follows:

Lead official - endline and sideline to his left.

Trail official - centre line and sideline to his left.

When the ball is in transition from the backcourt to the frontcourt, the responsibilities are divided (Diagram 81).

The other official should not normally interfere in decisions, unless his partner needs assistance. This will prevent conflicting decisions and jump ball situations.

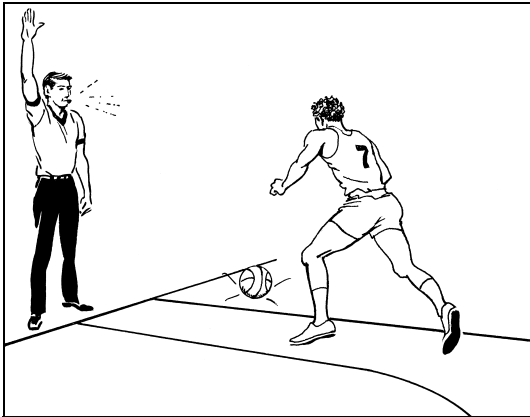


Diagram 82

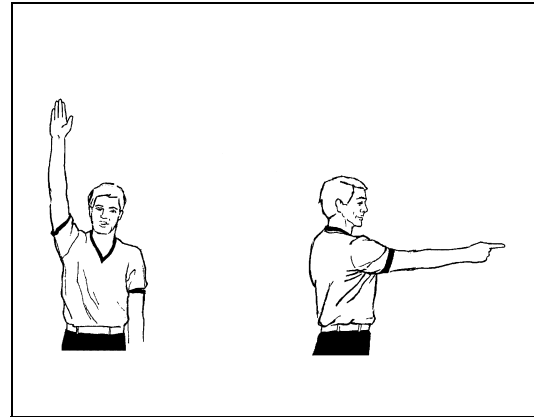


Diagram 83

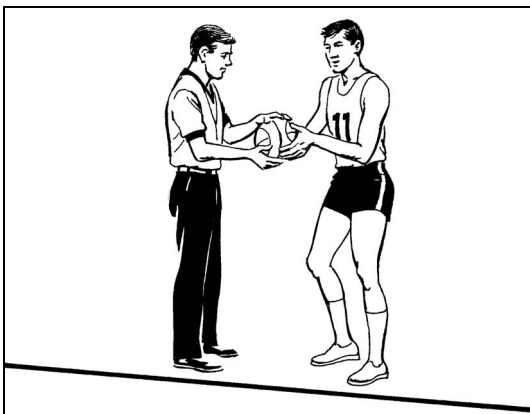


Diagram 84

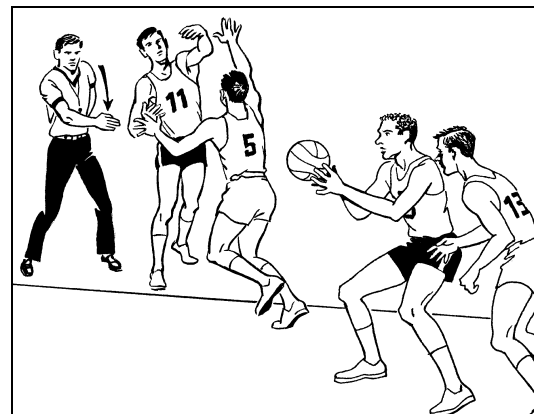
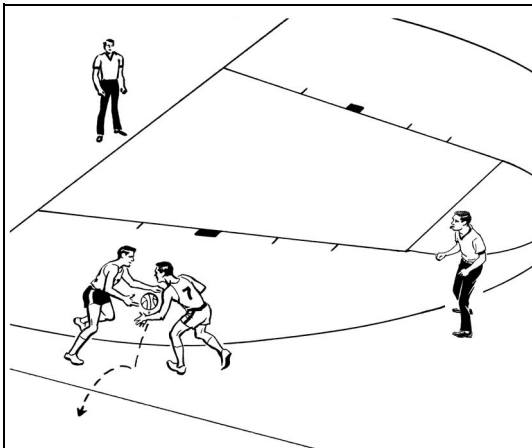
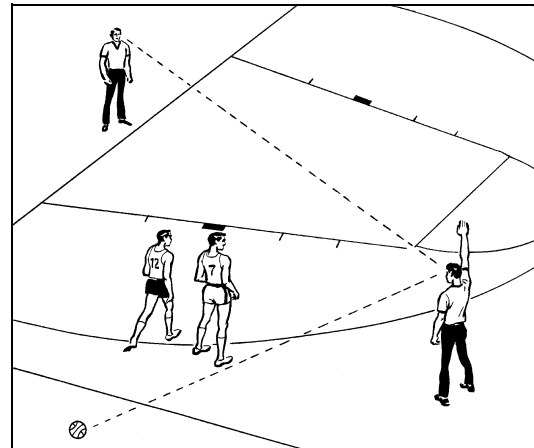
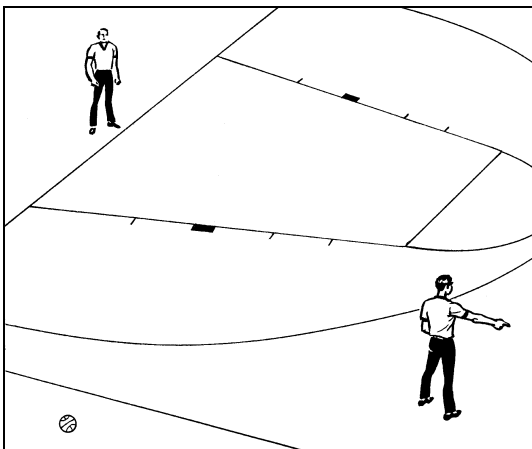
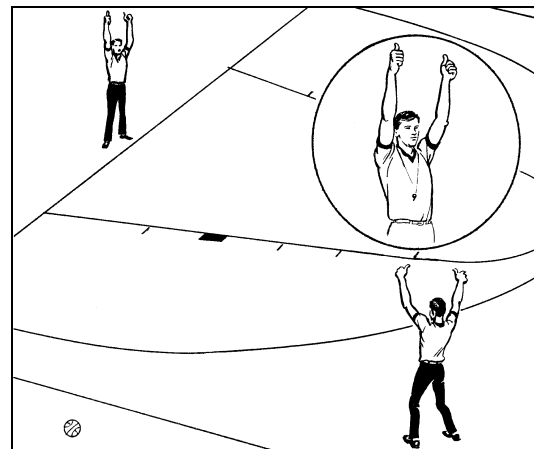


Diagram 85

5.2 Throw-ins

When the ball goes out-of-bounds:

1. The official responsible for that sideline or endline shall blow his whistle once and, simultaneously, raise his hand straight in the air, fingers together, to stop the game clock (Diagram 82).
2. He will clearly indicate the direction of play by pointing towards the basket of the opponents of the team that will take the throw-in (Diagram 83).
3. He will direct the player to take the throw-in to the place where the throw-in shall be administered.
4. The official will hand, bounce pass or place the ball at the disposal of the player who is to take the throw-in and verify that he does not take more than one normal step, in one direction, from the designated place (Diagram 84).
5. Following a successful field goal or successful last or only free throw, the official shall hand, pass or place the ball at the disposal of the player who is to take the throw-in
 - When by doing so, the game can be resumed more quickly,
 - After a time-out or substitution,
 - After the game was interrupted by the official for a valid reason.
6. The official shall give the time-in signal, using a chopping motion with the hand, when the ball first touches a player on the court following the throw-in (Diagram 85).


Diagram 86

Diagram 87

Diagram 88

Diagram 89

When the ball goes out-of-bounds and the official responsible for the line is not certain which player last touched the ball (Diagram 86), he will blow his whistle, give the stop the clock signal, and then look for help from his partner (Diagram 87).

If the other official knows which player last touched the ball before going out-of-bounds, he will, without blowing his whistle, give the direction of play according to the method of communication established during the pre-game conference. The official responsible for the line will then indicate the direction of play (Diagram 88).

In Diagram 89, both officials are in doubt as to which team should take the throw-in. In this case, they should both use the thumbs-up signal indicating a jump ball situation, followed by the direction of play signal.

The alternating possession throw-in shall be taken at the place nearest to where the ball went out-of-bounds.

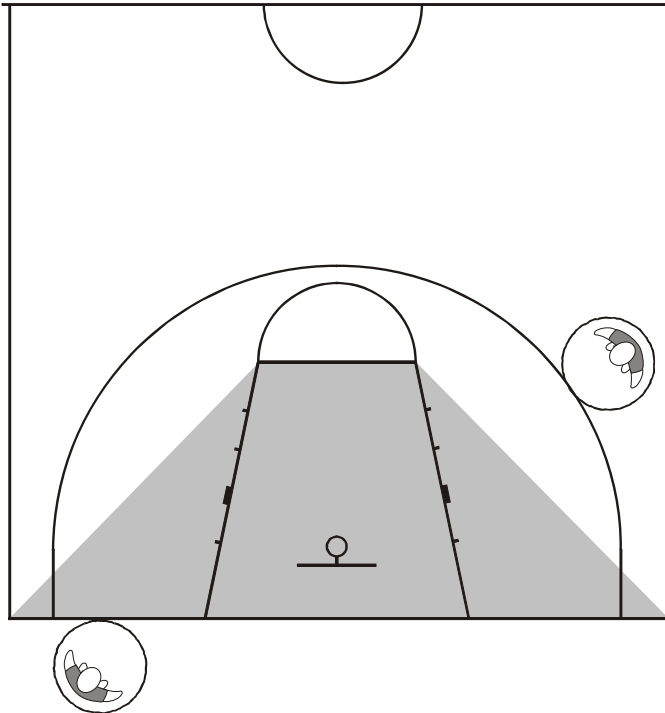


Diagram 90

Following any infraction or any stoppage of play to be resumed by a throw-in, the throw-in shall be taken at the place closest to the infraction or where the play was stopped.

If in rectangles 4, 5 or 6, the place closest to the infraction shall be determined by drawing two (2) imaginary lines between the corners of the playing court and the ends of the free-throw line (Diagram 90).

Any throw-in from within this area shall be taken at the place closest to the endline, **except directly behind the backboard.**

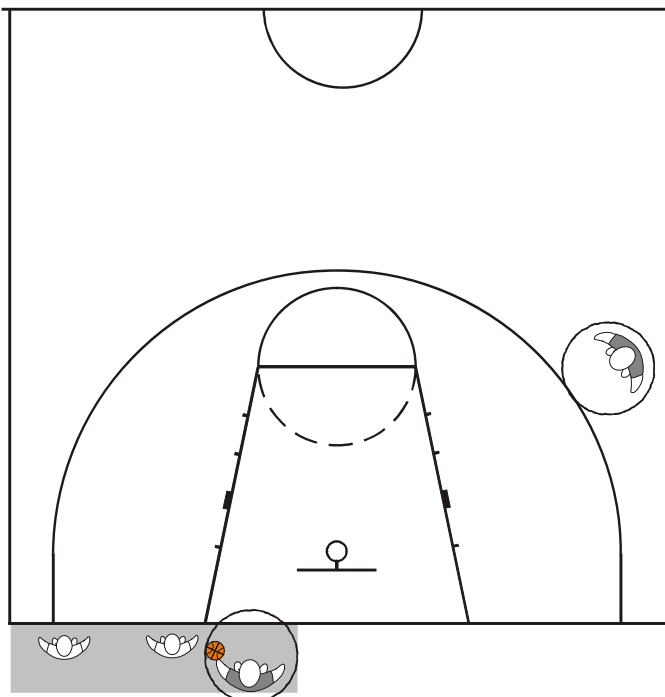
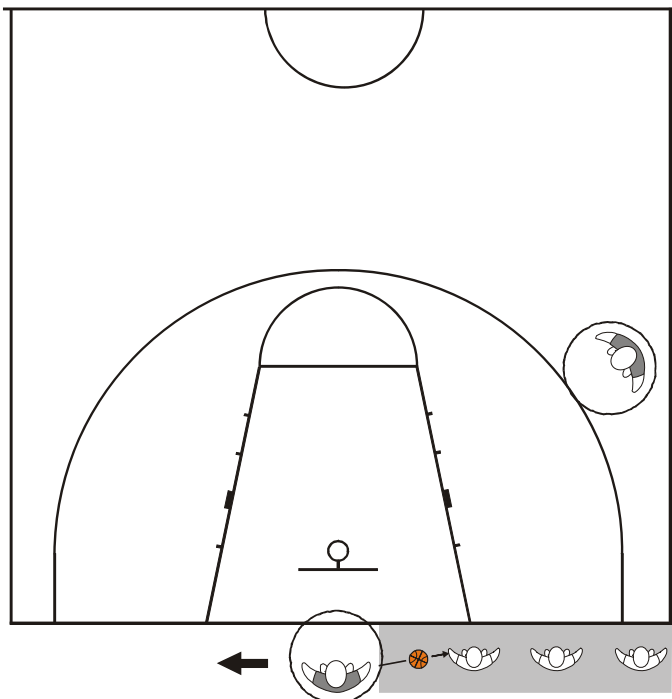


Diagram 91

When the throw-in is between the corner to the official's left and the near edge of the backboard, the lead official will **hand** the ball to the player with his **left hand** and then take one (1) or two (2) steps towards the restricted area/basket (**Diagram 91**).



When the ball is taken for a throw-in between the far edge of the backboard and the sideline to the lead official's right, he will **toss or bounce** pass the ball to the player and then return to the **Boxing-in** position (Diagram 92).

In all cases, the trail official is in a **penetrated position** observing all the off-the-ball action.

Diagram 92

Remember:

If the ball **enters** the basket but the free throw or the field goal is **not** valid, then the subsequent **throw-in shall be taken at the free-throw line extended.**

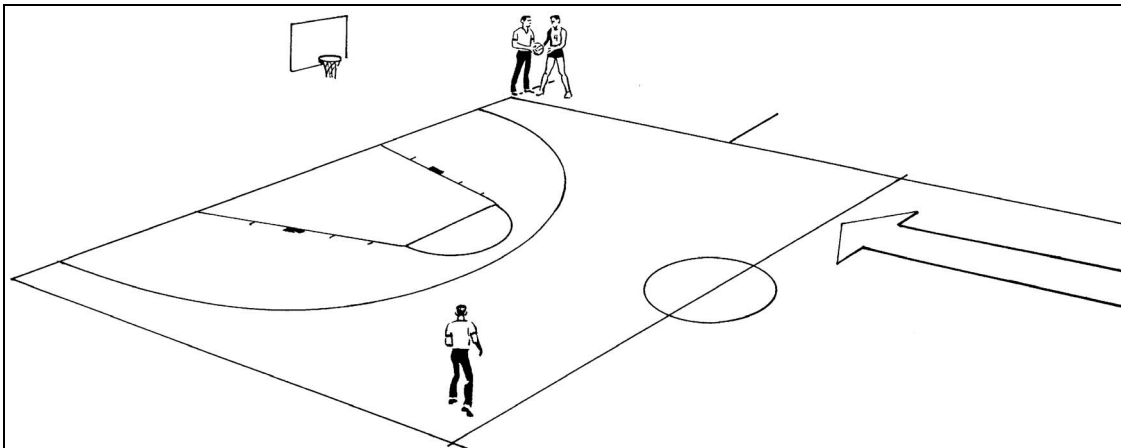


Diagram 93

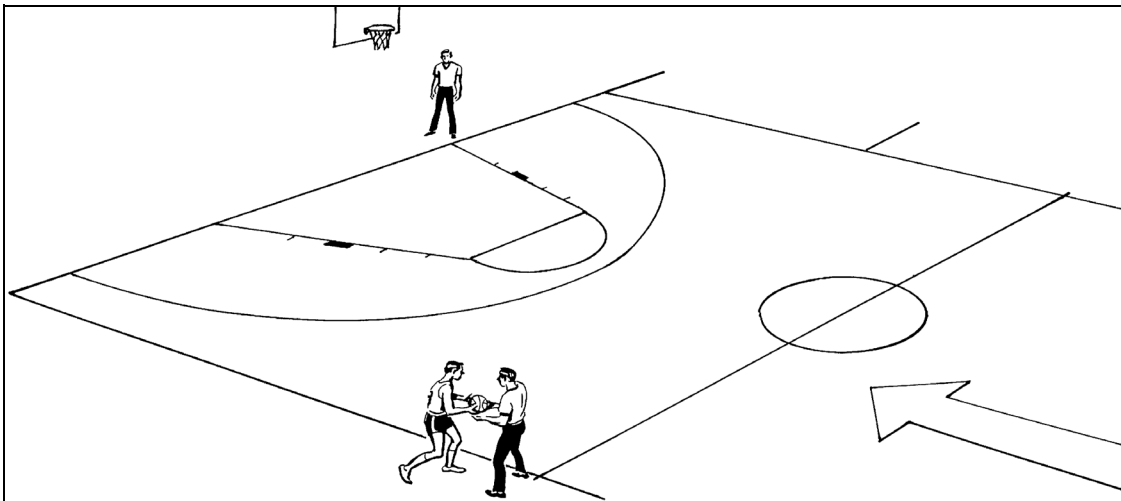


Diagram 94

When the ball is awarded to a team for a throw-in on the sideline in its frontcourt, the official responsible for the throw-in will **hand, pass or place the ball at the disposal** to the player who is to take the throw-in.

The official directly involved in handing the ball for the throw-in is responsible for controlling the throw-in provisions and will give the time-in signal when the ball first touches a player on the court.

By making eye contact, he must first check that his partner is ready before placing the ball at the disposal of the player.

In Diagram 93, the lead official, who is responsible for the throw-in on the sideline to his left from the free-throw line extended to the endline, is required to **hand or pass** the ball to the player. As he will maintain his position as lead official after the throw-in, he confirms this to his partner by standing on the endline side of the player.

Diagram 94 shows the trail official handing the ball to the player. The trail official should stand to the right of the player, as he will continue in the trail position. The lead official will move to a position so that all the players are "**boxed-in**".

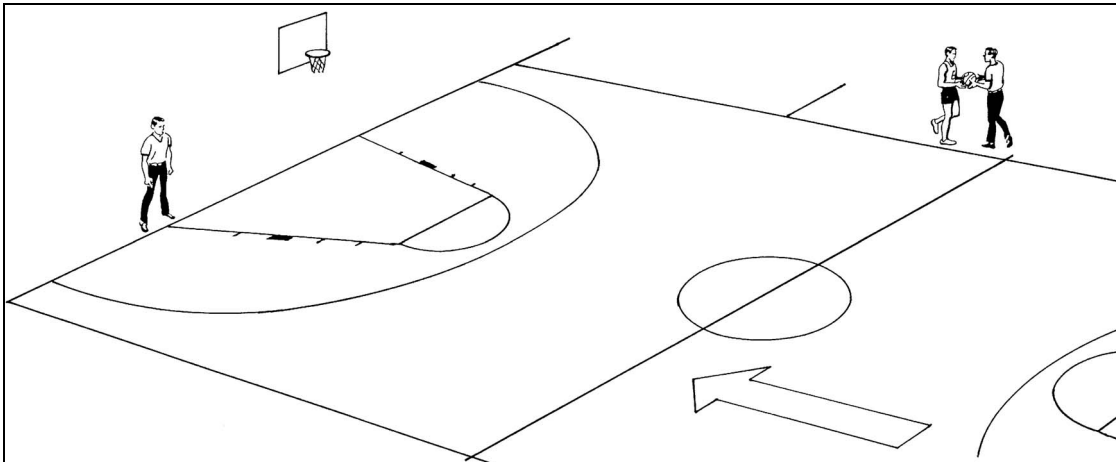


Diagram 95

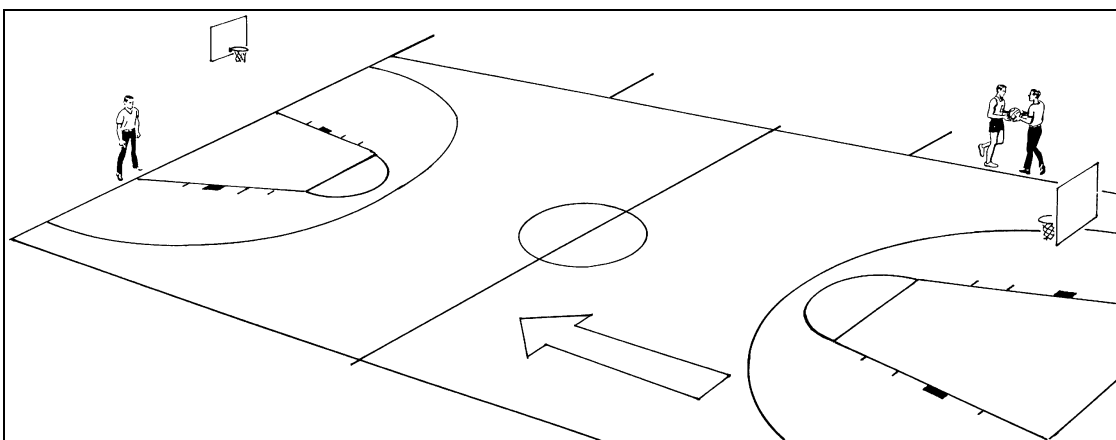


Diagram 96

Diagram 95 illustrates a throw-in to be administered between the free-throw line extended and the centre line. The trail official shall administer this throw-in.

He establishes eye contact with his partner who has moved to a "boxing-in" position.

Diagram 96 is an example of a throw-in in the backcourt. The trail official will cross over to the far sideline to administer the throw-in.

The lead official shall be positioned as in Diagram 96 when the throw-in is taken, "boxing-in" all the players.

The trail official handing the ball to the player for the throw-in will, at the first opportunity, cross over the court to the normal trail position and the lead official will return to the normal lead position.

Note: "Boxing-in" does not mean that officials must **always** be diagonally opposite.

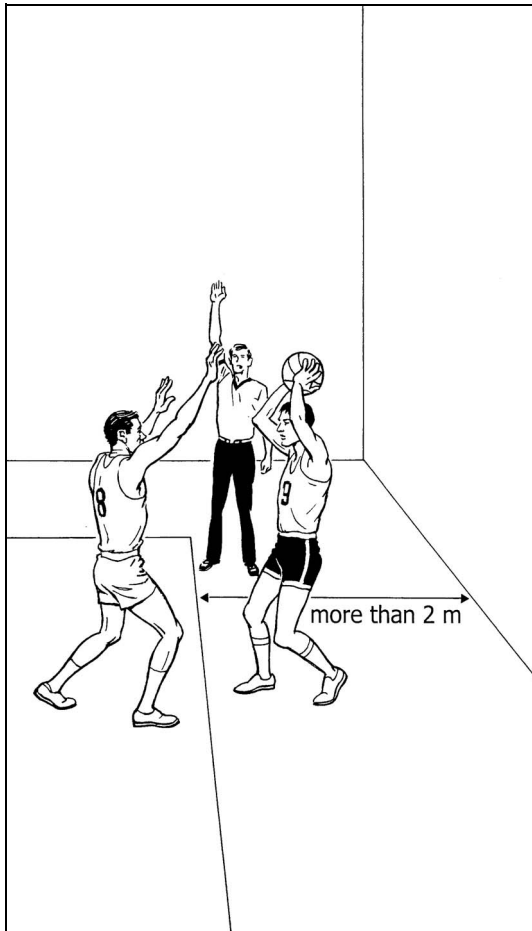


Diagram 97

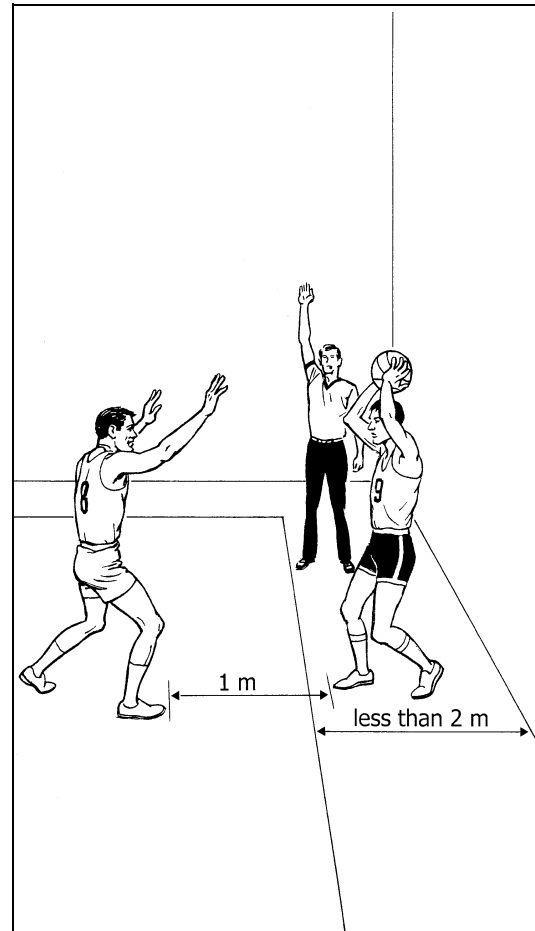


Diagram 98

In Diagram 97 and Diagram 98, the official ensures that the player taking the throw-in stands at the place closest to the infraction.

When the nearest obstruction to the boundary line is more than two (2) metres away, all other players on the court are entitled to be as close to the boundary line as they wish.

If the out-of-bounds area free from obstruction is less than 2 metres away, **no player of either team shall be within one (1) metre of the player** taking the throw-in.

The official responsible for the administration of the throw-in shall take care of this situation.



Diagram 99

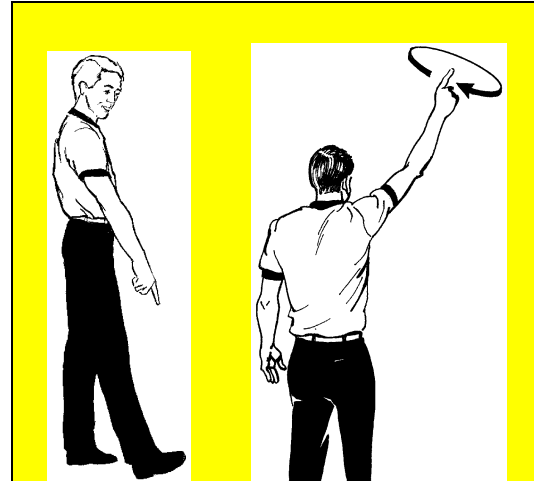


Diagram 100

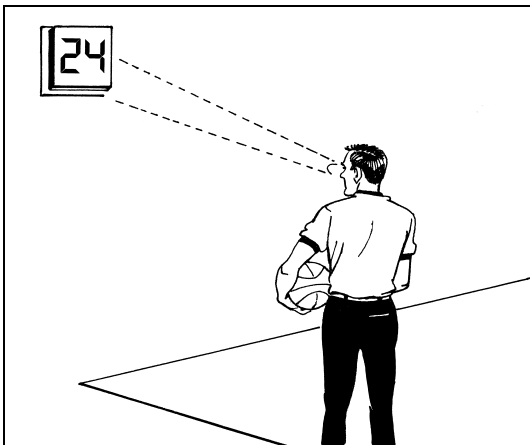


Diagram 101



Diagram 102

5.3 Twenty-four second device

The twenty-four second device is always stopped when the ball goes out-of-bounds.

The device is not reset when the ball is deflected out-of-bounds. It continues from the time that it was stopped as soon as team control, by the same team, is established again on the playing court.

In Diagram 99, the defensive player deliberately kicks the ball. This is a violation. As a result, the official gives the reset signal to the twenty-four second operator (Diagram 100).

The official should ensure that the device displays "24" (Diagram 101) before handing the player the ball to take the throw-in (Diagram 102).

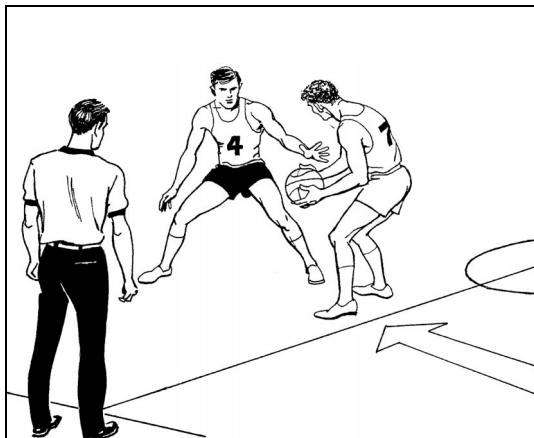


Diagram 103

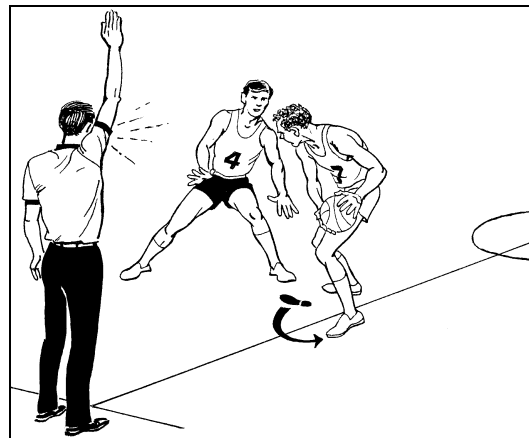


Diagram 104

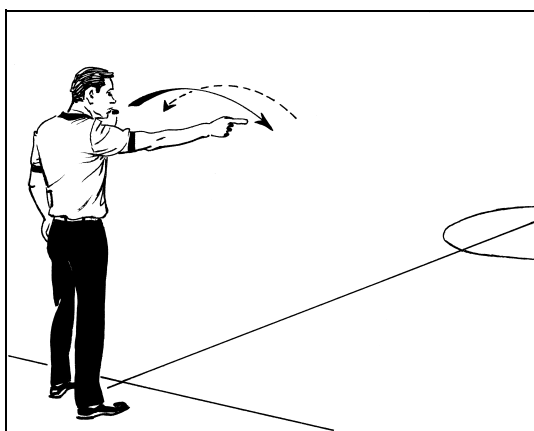


Diagram 105

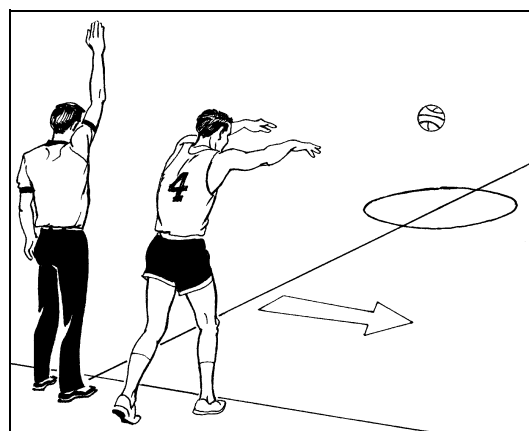


Diagram 106

5.4 Ball returned to the backcourt

In Diagram 103 and Diagram 104, a player in control of the ball in the frontcourt causes the ball to go into his backcourt. This is a violation.

The trail official is responsible for the centre line and therefore blows his whistle once, gives the stop clock signal followed by the ball returned to backcourt signal and the direction of play signal.

Remember:

The ball has been illegally returned to the backcourt when a player of the team in control of the live ball is:

1. The last to touch the ball in his frontcourt, after which that player or a team-mate is the first to touch the ball in the backcourt.
2. The last to touch the ball in his backcourt, after which the ball touches the frontcourt and then is first touched by that player or team-mate in the backcourt.

6 Shooting situations

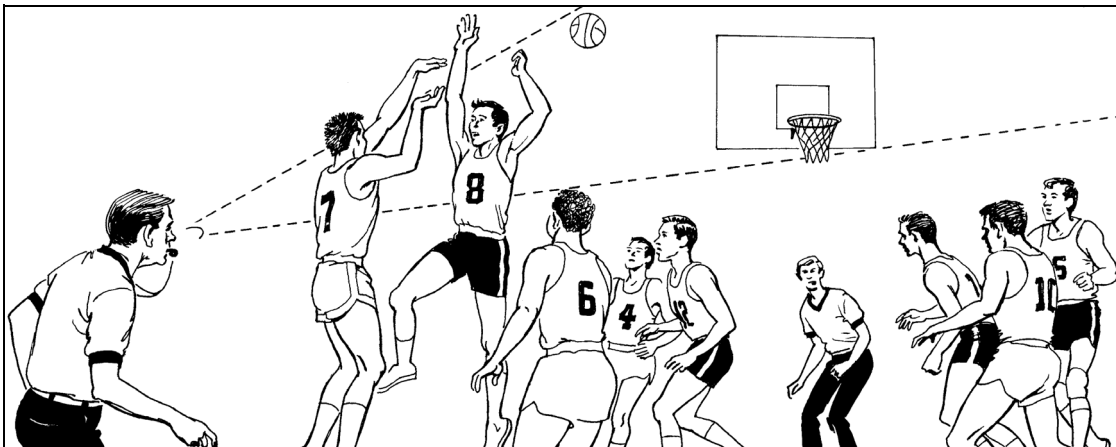


Diagram 107

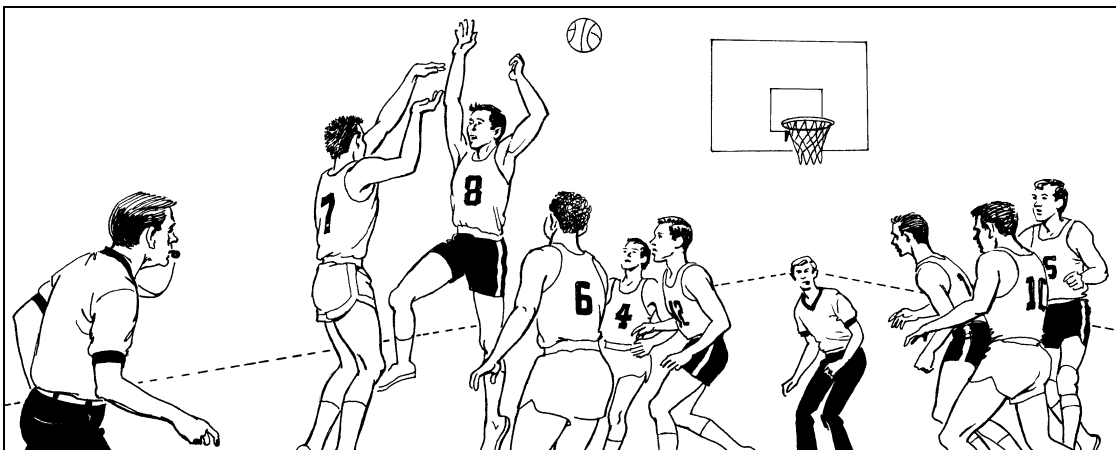


Diagram 108

6.1 Flight of the ball

The trail official is primarily responsible for the flight of the ball. He must determine if the ball has entered the basket by signalling it to the scorer's table. The lead official concentrates on situations away from the ball.

However, it is always the official calling the foul (lead or trail) who will decide whether a basket should count.

Regardless of which official called a foul, it is absolutely vital that the trail official watches the flight of the ball to the basket, as well as the players involved with the foul situation.

The team that scored should not delay the game by preventing the throw-in from being taken promptly. There is no need for a player from that team to touch the ball. No more than one warning shall be given to the team, and, in some cases, a technical foul may be called even on the first occurrence.

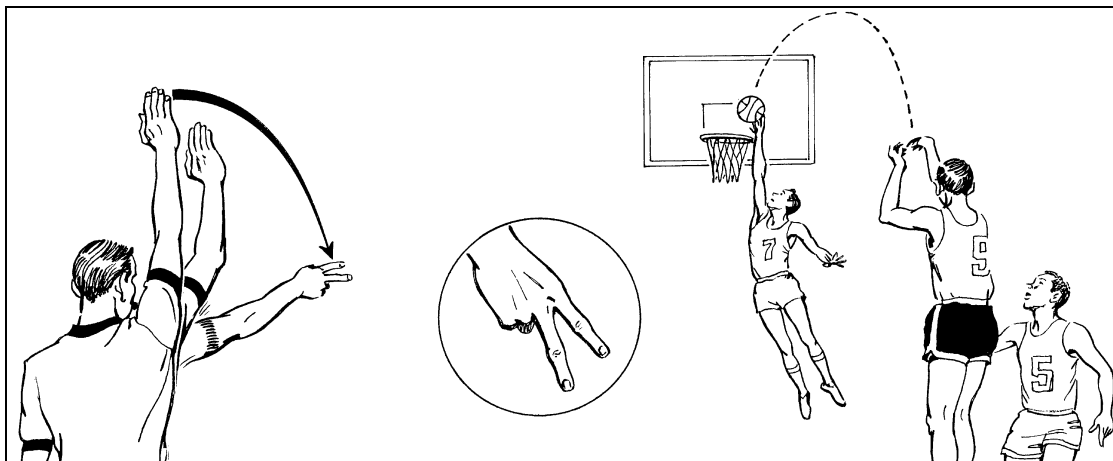


Diagram 109

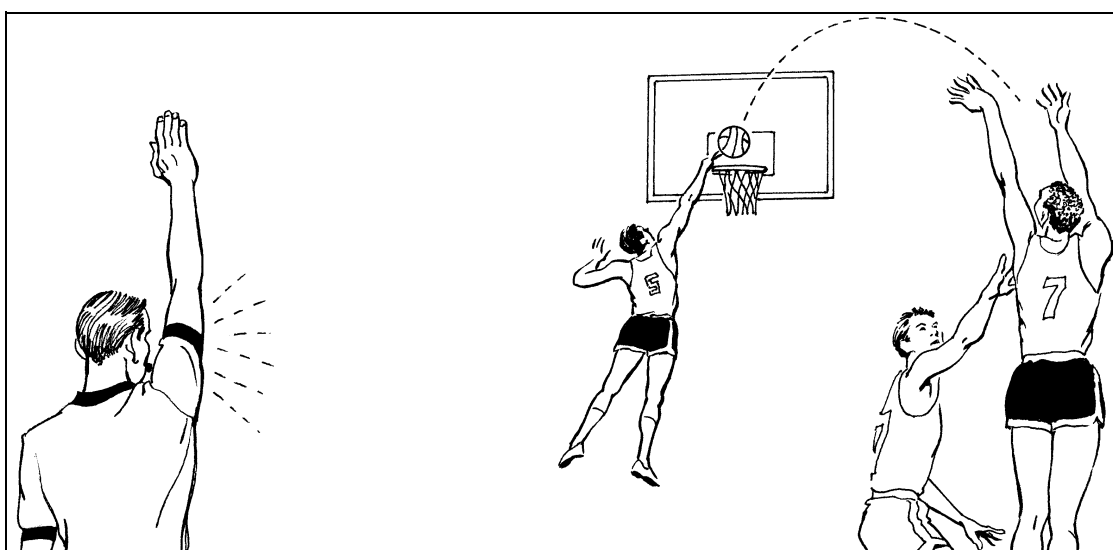


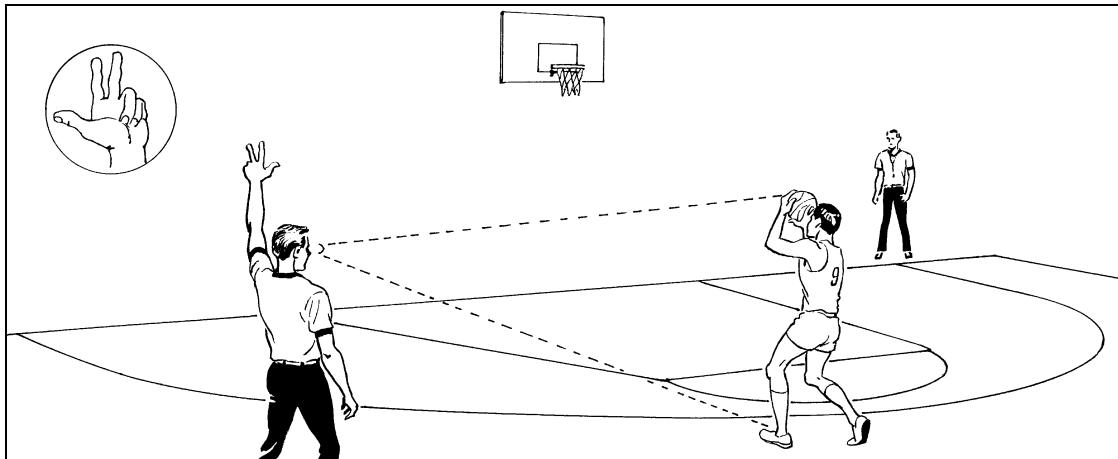
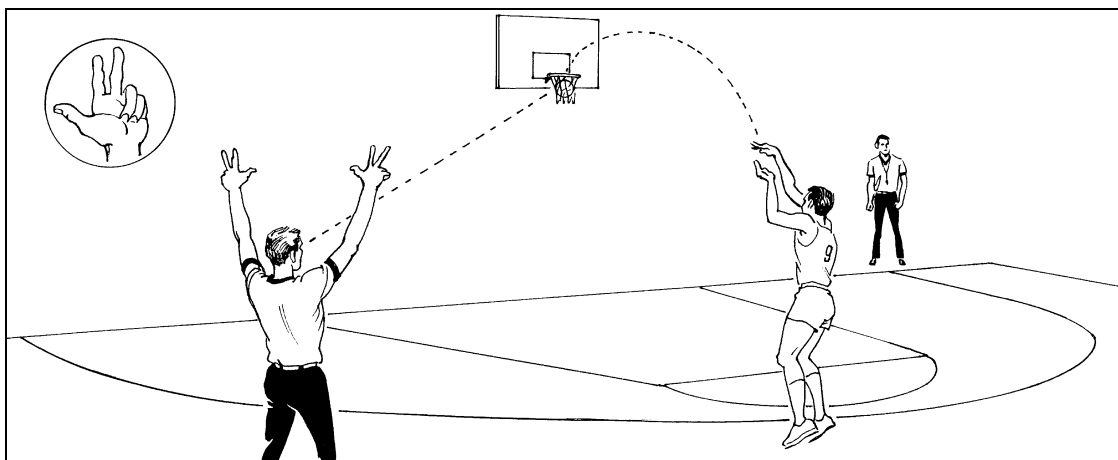
Diagram 110

6.2 Goal tending and Interference

The trail official is responsible for watching the flight of the ball during a shot for a field goal and he must therefore make decisions concerning goal tending and interference.

During a shot for a field goal, a **defensive player** touches the ball while it is on its downward flight and completely above the level of the ring, before it touches the ring or it is evident that it shall touch it. The trail official shall blow his whistle and indicate that two (2) points are to be credited to the shooting team (Diagram 109).

The trail official is also responsible for offensive goal tending and interference. When, on a shot for a field goal, the ball is completely above the level of the ring, on its downward flight and before it touches the ring or it is evident that it shall touch it, an **offensive player** may not touch the ball (Diagram 110). The trail official shall blow his whistle, give the stop the clock signal, cancel the play and indicate the new direction of play.


Diagram 111

Diagram 112

6.3 Three-point field goal attempts

The trail official is responsible for signalling all three-point field goal attempts.

He will watch the feet of the shooting player, to make sure the attempt was made from the three-point field goal area.

Decided that the field goal attempt is for three (3) points, the trail official will raise one arm with three (3) pointed fingers: the thumb, index and middle finger (Diagram 111).

If the three-point field goal attempt is successful, the trail official will confirm that three (3) points have been scored by raising both arms with three (3) pointed fingers on each hand (Diagram 112).

The trail official maintains this signal until he is assured that the **scorer** has had sufficient time to recognise the successful three-point shot signal.

It is important that the trail official does not turn his back on the play as he moves from the trail to the lead position.

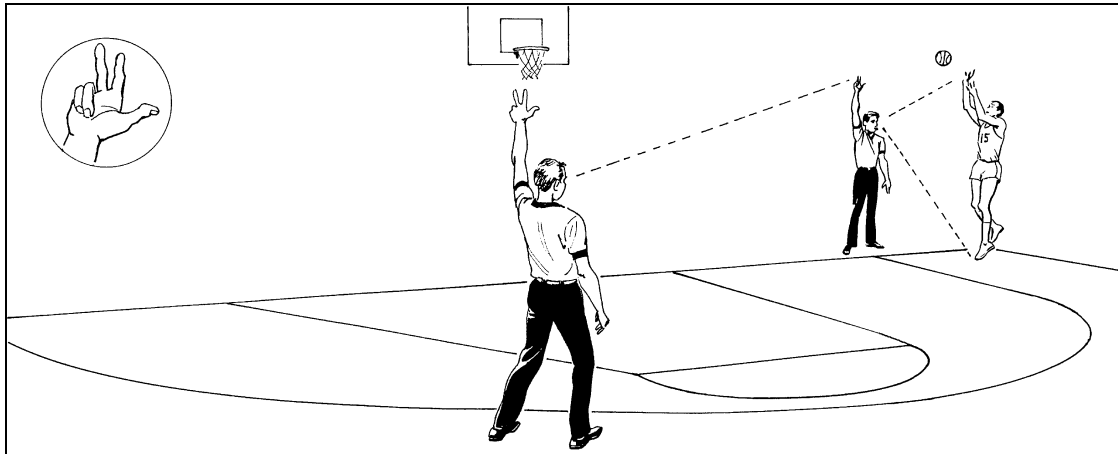


Diagram 113

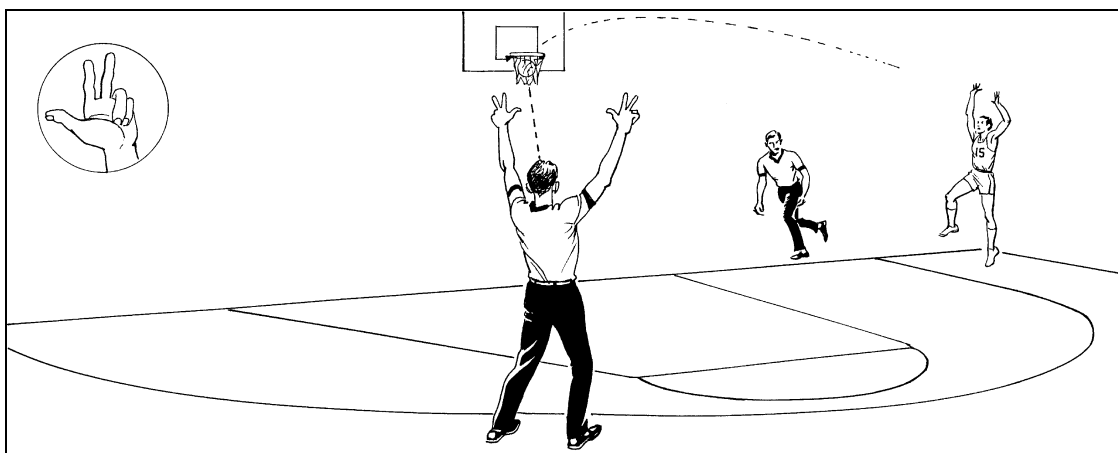


Diagram 114

Not all three-point field goal attempts will be seen clearly by the trail official.

This is especially the case with shots attempted in the corner furthest away from him (rectangle 4). The lead official is closer to the play and it is his responsibility to assist his partner.

When the three-point field goal is attempted, the lead official will raise one arm with three (3) pointed fingers. This signal must be acknowledged and repeated by the trail official (Diagram 113).

If the three-point field goal attempt is successful, **only** the trail official confirms this to the **scorer** by raising both arms with three (3) pointed fingers on each hand (Diagram 114).

Close cooperation between the two (2) officials is absolutely essential.

If the attempt is made by a player straddling the 'line' between rectangles 3 and 4, the trail official must officiate this play from mid-court.

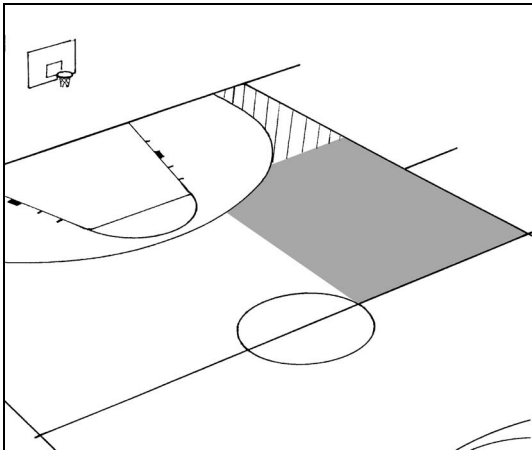
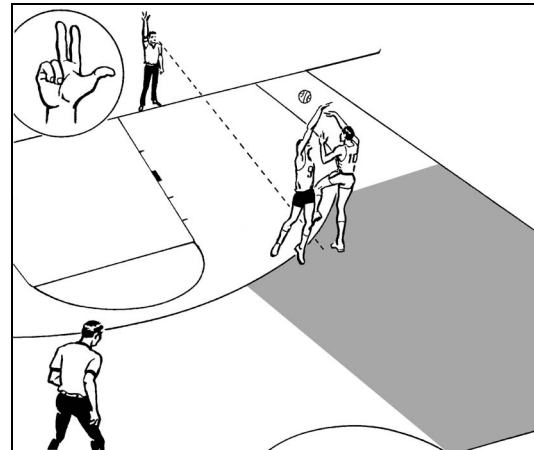
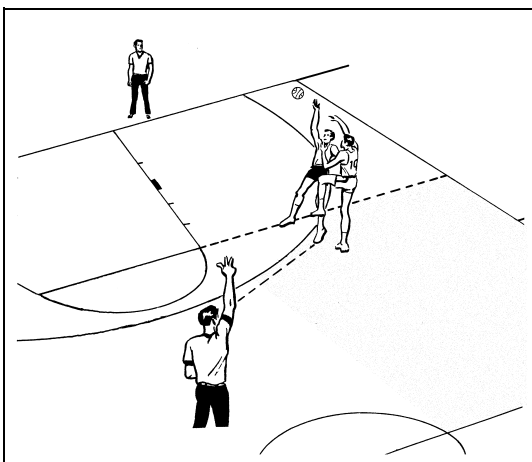
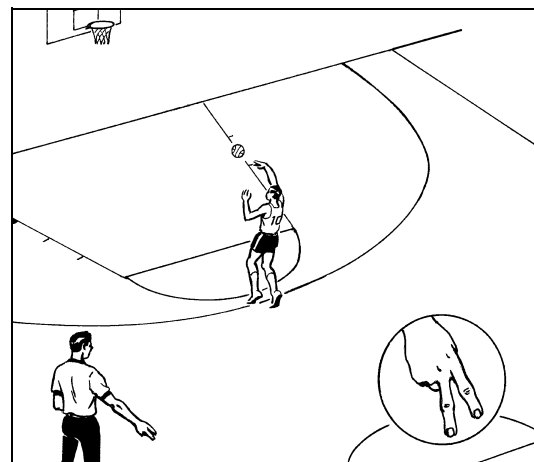

Diagram 115

Diagram 116

Diagram 117

Diagram 118

Diagram 116 illustrates which of the two (2) officials will first indicate a three-point field goal attempt. The trail official is responsible for the shaded area and the lead official is responsible for the lined area.

The location of the defensive player(s) and the three-point shooter, as well as the respective angle of vision of the two (2) officials, determines which official gives the initial attempt signal (Diagram 116 and Diagram 117).

Good cooperation and close eye contact between the two (2) officials is absolutely necessary for all three-point field goal attempts and for shots attempted close to the three-point line.

Sometimes, in the case of a two-point field goal attempt, which is close to the three-point line, the trail official could indicate immediately with two (2) fingers to the **scorer** that the field goal, if successful, counts for two (2) points (Diagram 118). This could avoid additional pressure from spectators, coaches and players.

The three-point line is not part of the three-point field goal area.

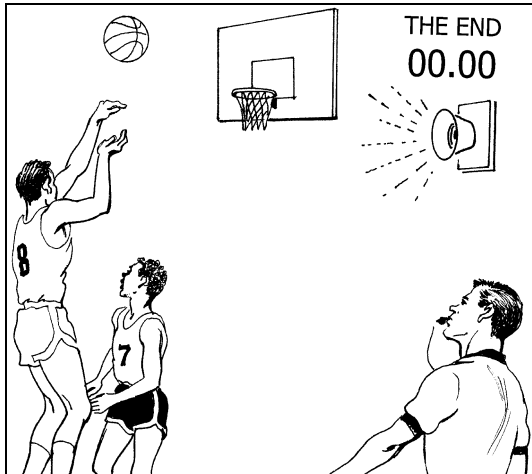


Diagram 119

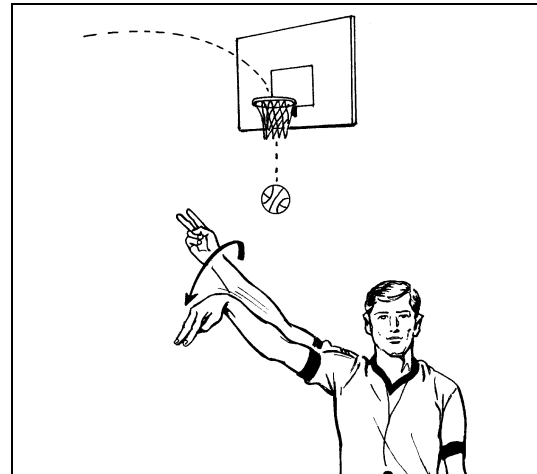


Diagram 120

6.4 End of playing time for a period or extra period

Shots attempted close to the end of playing time for a period or extra period can create difficulties for the officials, especially when there are many spectators and the signal cannot be easily heard.

The decision should be taken as quickly as possible.

The trail official is primarily responsible for indicating whether or not the basket will count. Normally the lead official, even if he is the referee, will accept the judgement of his partner and should do everything to support the decision.

However, there are occasions when the situation may not be clear and the two (2) officials must consult each other before the referee makes the final decision. If further consultation is necessary, the referee may consult the umpire, commissioner, if present, and/or table officials. However, **the referee shall make the final decision.**

7 Signals and Procedures

7.1 Signals

As interest in the game of basketball increases, with more spectators and greater media coverage, it is absolutely vital that the official is explicit and precise in the way in which he calls the game. It is essential that the officials indicate clearly to everyone what has taken place.

1. The official FIBA signals only **must** be used.
2. A loud, sharp whistle should be used. It should be blown once only and crisply for any violation or any foul.
3. Actions will speak louder than words and voices should be used only when necessary.
4. Signals should be kept sharp and concise. There will be times when these will help the official to sell the call. There is no need for theatrics and overacting.
5. Stop the clock signals must be very clear.

Officials **must** stop the clock with a straight arm in the air, with a clenched fist for a foul, an open palm with fingers together for a violation or with the signal for a technical, unsportsmanlike or disqualifying foul, or jump ball situation.

6. All signals to the **scorer must** be:
 - a) Done in a position from approximately six (6) to eight (8) metres from the scorer's table. The game clock is stopped, so there is no need to hurry the signals.
 - b) Made at eye level and away from the body.
 - c) With the following sequence of signals for a foul:
 1. Number of the player.
 2. Type of foul.
 3. Number of free throw(s) or direction of play.

Note: Any validation or cancellation of a score **must** be done **before** any of the above signals.

7. For observing closely guarded player, throw-in and free-throw execution, and eight seconds the official responsible for the play shall use the visible count (Official's signal no. 14).

The quality of an official's signals will enhance his image as an official. It will tell the people that he knows his job and is doing it well.

It will give the official confidence.

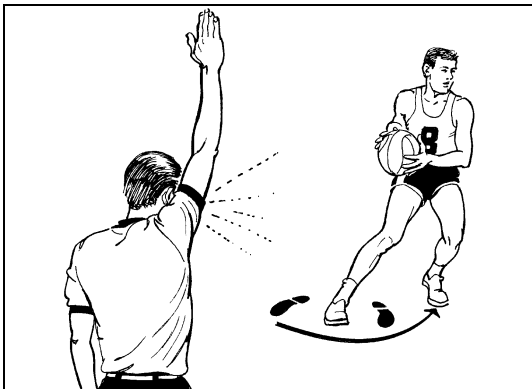


Diagram 121

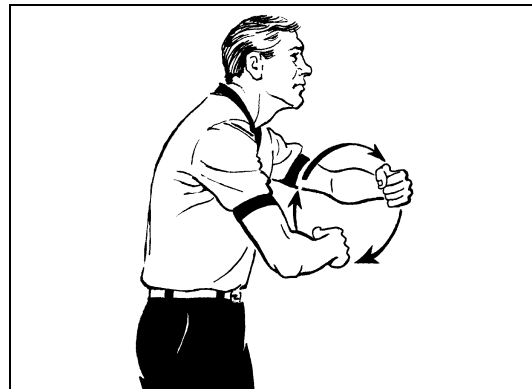


Diagram 122

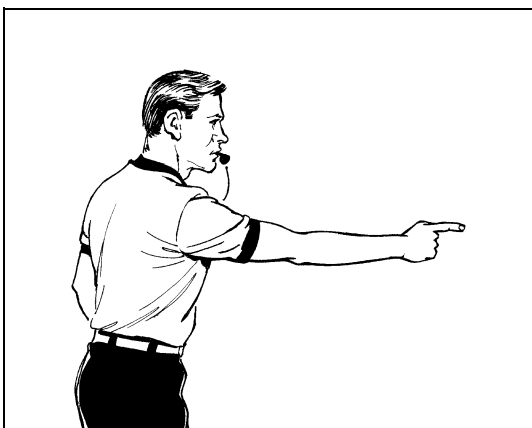


Diagram 123

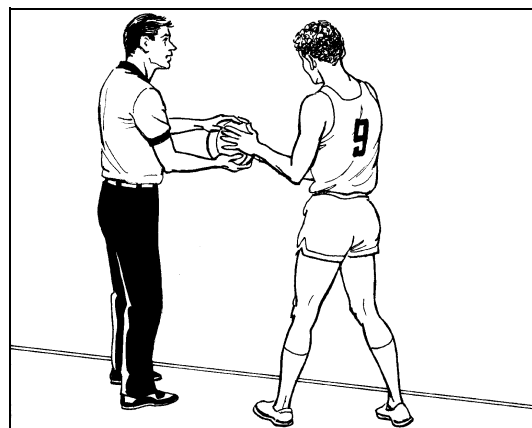
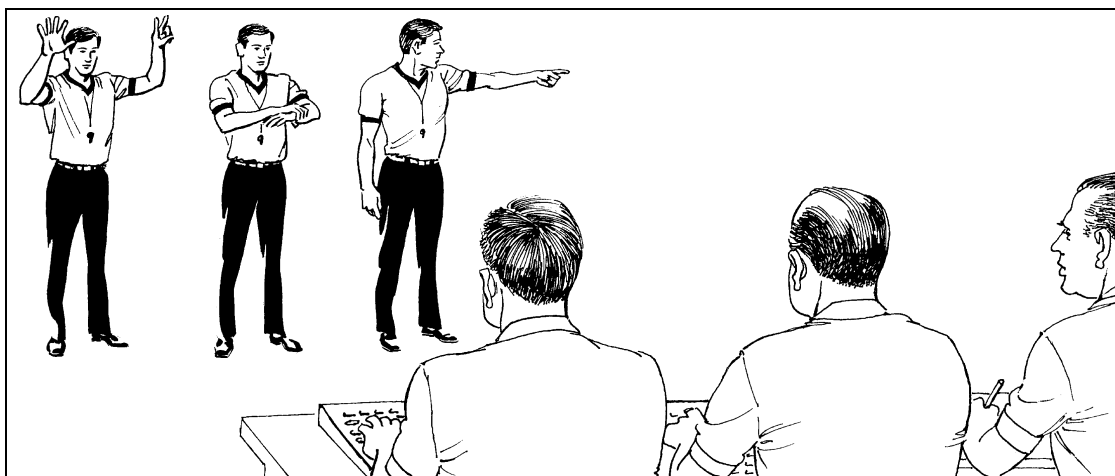


Diagram 124

7.2 Violations

Whenever a violation occurs, the official responsible for the play must:

1. Blow the whistle once and simultaneously stop the game clock with his arm raised straight (not a bent arm action), open palm and fingers closed together (Diagram 121).
2. Indicate clearly the type of the violation (Diagram 122 - Travelling). It is not a violation when the ball has gone out-of-bounds.
3. Indicate even more clearly, using the same arm, the direction of play that is to follow (Diagram 123).
4. In all situations the administering official is required to hand or bounce pass the ball (Diagram 124).
5. The sequence of signals for a violation:
 - a) Stop the clock.
 - b) Type of violation.
 - c) Direction of play.


Diagram 125

Diagram 126

7.3 Fouls

Whenever a foul occurs, the official responsible for the play **must**:

1. Blow the whistle once and simultaneously stop the game clock with the arm raised straight (not a bent arm action) and a clenched fist (Diagram 125).
2. Make sure that the player is aware he is being charged with the foul by pointing to his waist with a straight arm, palm facing the floor. In controversial situations where free throws are awarded, indicate how many.
3. **Run** towards the scorer's table **and stop**, taking a position so that the **scorer** has a clear and unobstructed view of the official, approximately six (6) to eight (8) metres from the scorer's table.
4. Report all signals while standing still. Signal very clearly and slowly the number of the player who has committed the foul. It is advisable to 'hold' the signal for a couple of seconds, as it is vital that the **scorer** records the correct number.
5. Next, indicate the type of the foul.
6. Complete the communication procedure by indicating the number of free throws or the direction of play that is to follow and **run** to the next position.
7. On completion of the signals the two (2) officials shall, in principle, exchange positions.

7.4 Switching after fouls

Under normal circumstances, the officials shall switch (exchange) positions after each foul.

However the officials **shall not exchange** positions when:

- An offensive foul is called by the lead official i.e. after reporting the foul to the scorer's table, he will become the new trail official and the trail official will become the new lead official at the opposite endline.
- A defensive foul is called by the trail official i.e. after reporting the foul to the scorer's table, he will remain as the trail official and the lead official will remain as lead official at the endline.

7.5 Team control foul

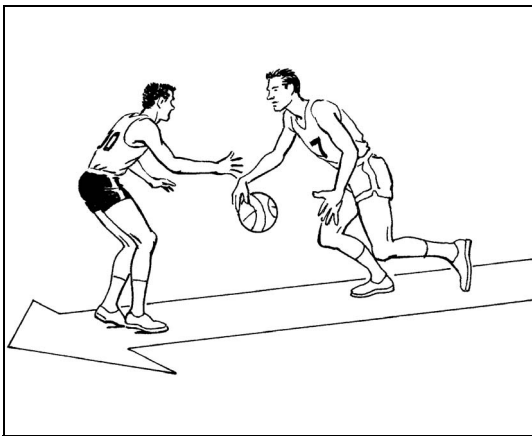


Diagram 127

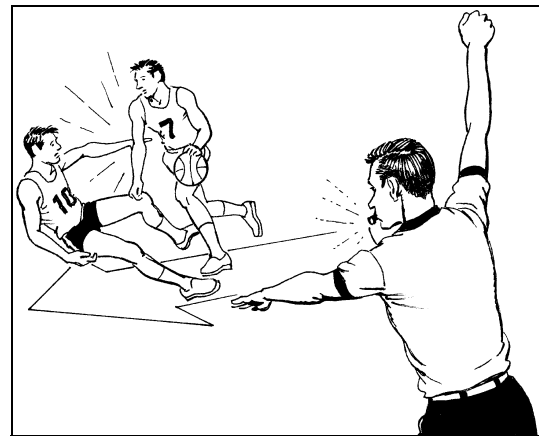


Diagram 128

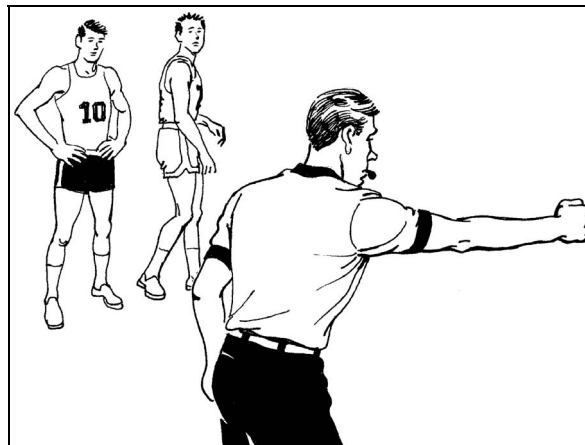
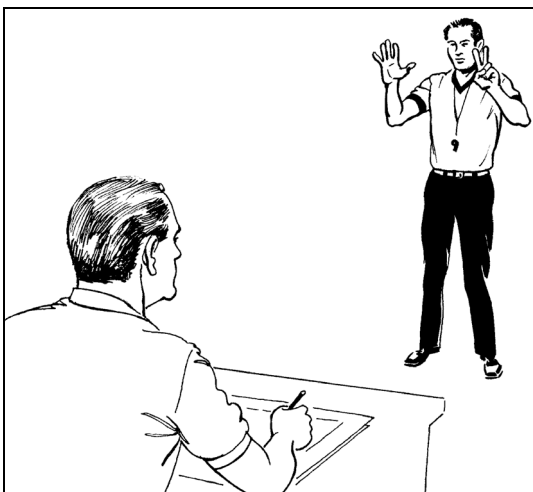
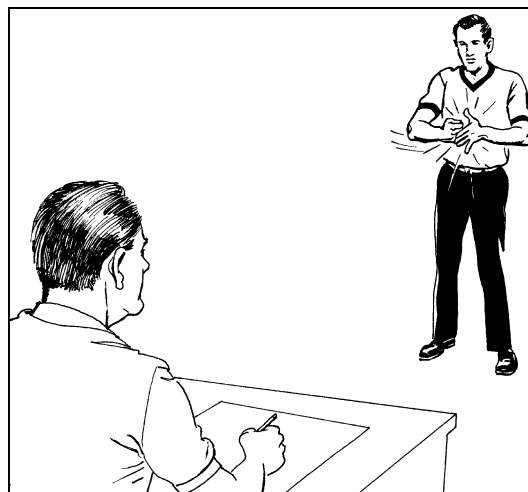
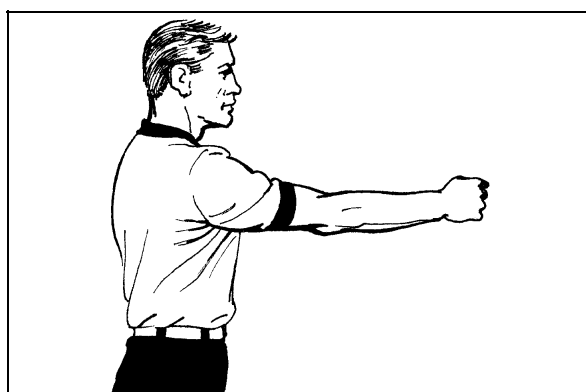


Diagram 129

The offensive player who is dribbling the ball charges into the defensive player who had established a legal guarding position (Diagram 127 and Diagram 128).

The official responsible for on-the-ball coverage blows his whistle and simultaneously raises his fist straight into the air to stop the clock.

Immediately following the personal foul signal, the official gives the team control foul signal with a clenched fist pointing in the direction of the basket of the team committing the foul (Diagram 129).


Diagram 130

Diagram 131

Diagram 132

The official who called the foul now runs into a position clear of players, approximately six (6) to eight (8) metres from the scorer's table, to report the foul.

He indicates the number of the player, in this case number 7 (Diagram 130) and the charging with the ball signal (Diagram 131).

The final part of the sequence is to show the new direction of play using team control foul signal (Diagram 132).

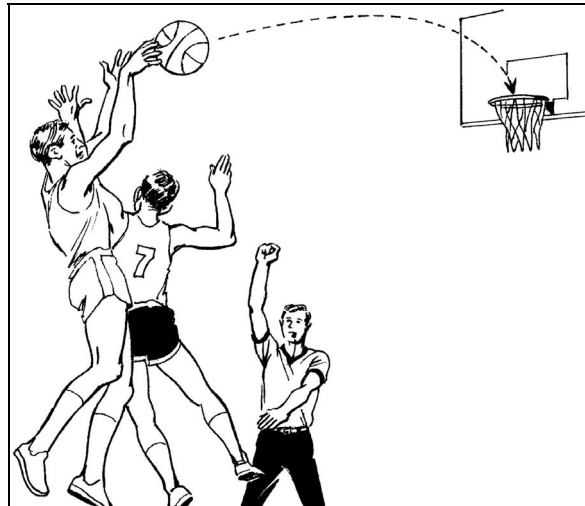


Diagram 133

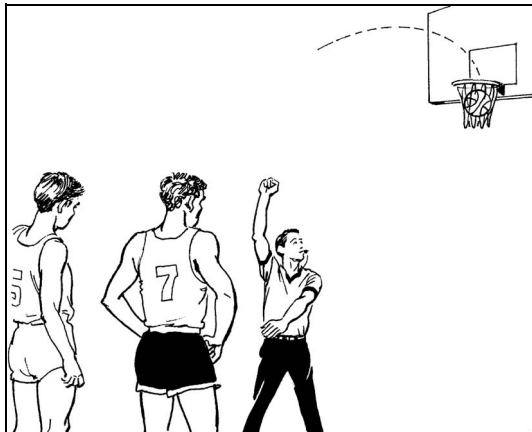


Diagram 134

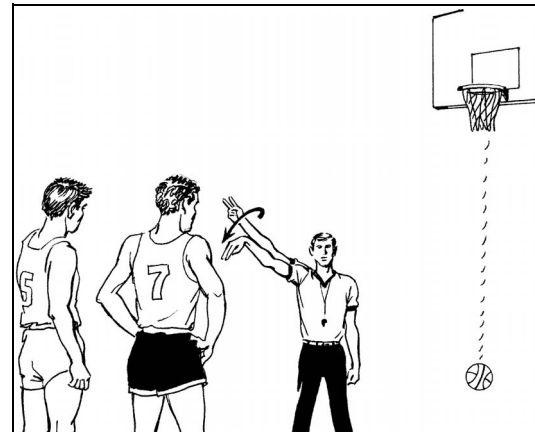


Diagram 135

7.6 Foul and successful field goal

The player is fouled in the act of shooting and the field goal is successful (Diagram 133).

The lead official has blown his whistle and stopped the clock (Diagram 134).

Next he must indicate to everyone whether or not the field goal attempt was valid and the points are awarded. This signal must be given first, to avoid additional pressures from spectators, coaches and players (Diagram 135).

If the official who called the foul is not certain if the ball entered the basket, he must verify this fact with his partner using the method established in the pre-game conference.

The final decision on whether or not this field goal counts shall be made by the official who called the foul.

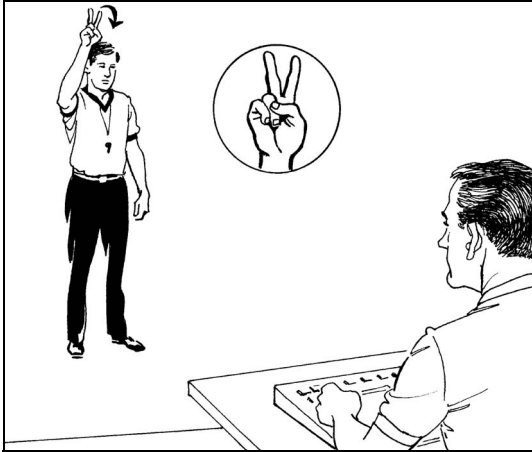
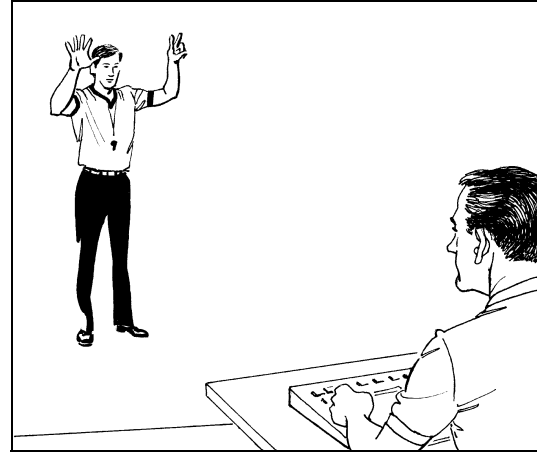
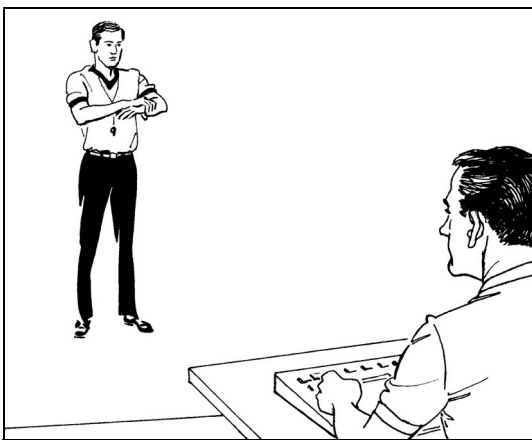

Diagram 136

Diagram 137

Diagram 138

Diagram 139

The official runs into a position clear of players, approximately six (6) to eight (8) metres from the scorer's table, and **stops**.

From this stationary position, he first confirms that a field goal has been scored. In Diagram 136, the official indicates that two (2) points are to be credited to the shooting team.

After this, the official indicates the number of the player committing the foul (Diagram 137) and the type of foul (holding) (Diagram 138).

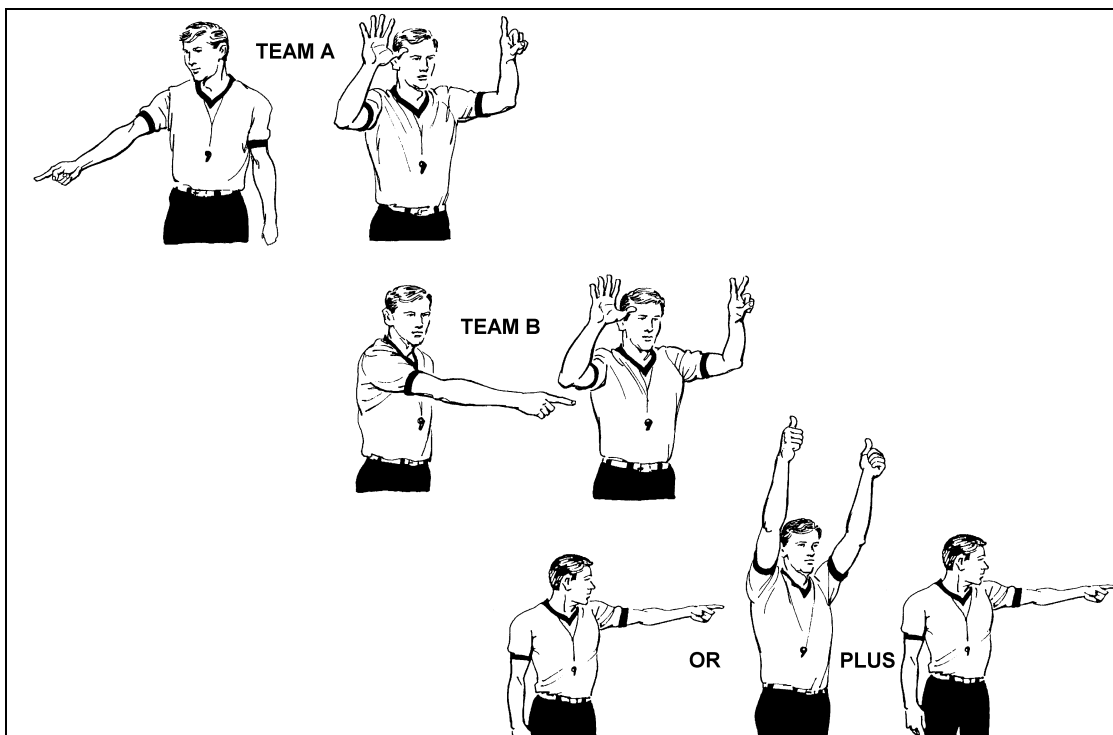
To complete the reporting procedure, the official indicates that one free throw will be awarded (Diagram 139).



Diagram 140

7.7 Double foul

The official calling the fouls blows his whistle and simultaneously gives the double foul signal (Diagram 140).


Diagram 141

The official runs to a position clear of players, approximately six (6) to eight (8) metres from the scorer's table. Next, he clearly indicates the first team by pointing in the direction of the team bench and then gives the player's number (6).

In this situation it is absolutely vital that the **scorer** records the number of the player correctly.

He then indicates the second team by pointing in the direction of the team bench and then gives the player's number (7).

Finally, the official shall indicate that a jump ball situation has occurred, followed by direction of play signal.

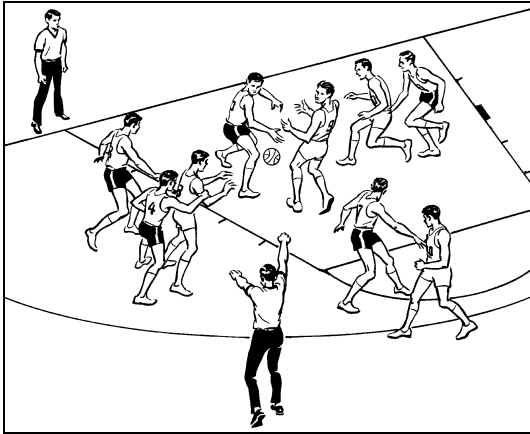


Diagram 142

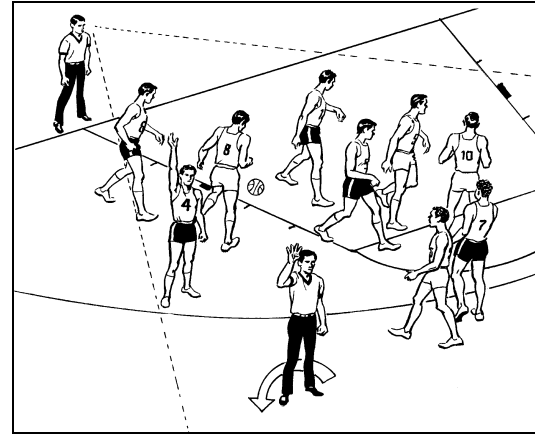


Diagram 143

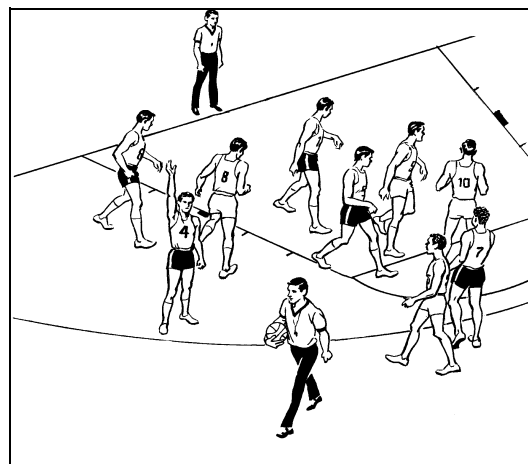


Diagram 144

7.8 Positioning of officials after a foul

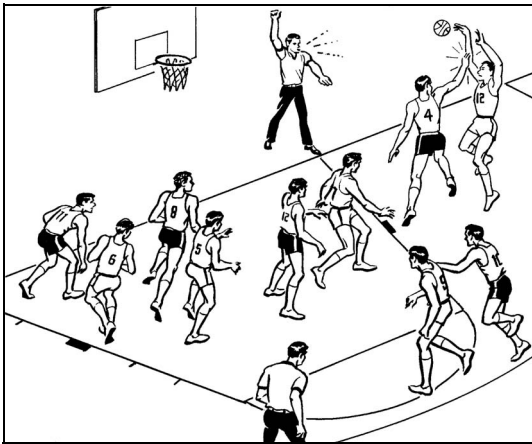
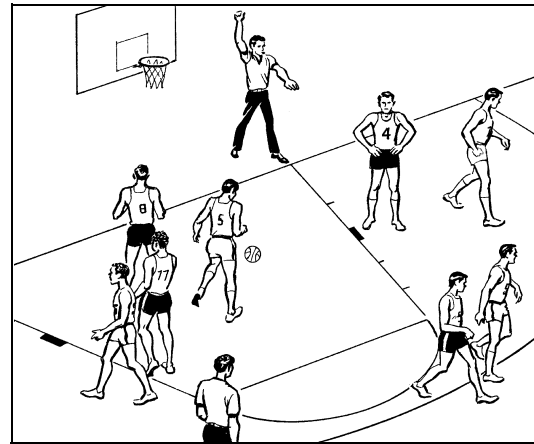
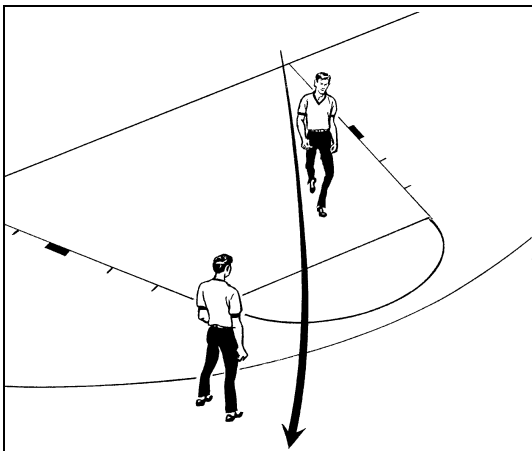
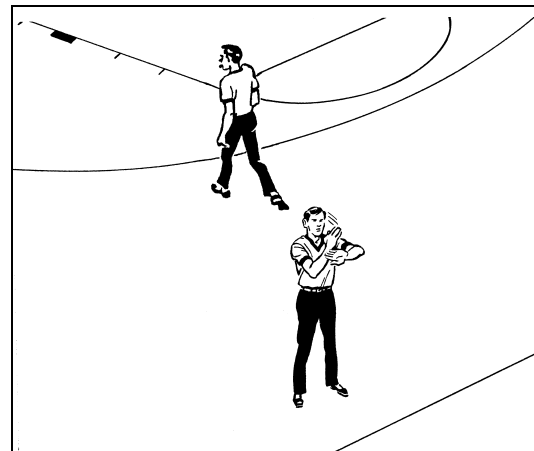
A foul is committed by a defensive player on an opponent who is passing the ball.

The trail official blows his whistle and gives the foul signal with a straight arm and clenched fist (Diagram 142).

The lead official (not calling the foul) must momentarily remain standing still and concentrate his attention on the players on the court.

He is the only official at this time who will observe the players since the official who called the foul is reporting the foul to the **scorer** (Diagram 143).

The officials shall not exchange positions (Diagram 144).


Diagram 145

Diagram 146

Diagram 147

Diagram 148

A foul is committed by a defensive player on an opponent in the act of shooting. The attempt is not successful (Diagram 145 and Diagram 146).

The lead official who is responsible for on the ball coverage blows his whistle for a defensive foul.

The trail official (not calling the foul) must momentarily remain standing still and concentrate his attention on the players on the court (Diagram 146 and Diagram 147).

As soon as his partner has commenced reporting the foul, the trail official will move towards the place from which the game will be resumed, in this case the free-throw line, keeping his eyes on the players (Diagram 148). The lead official shall become the new trail official.

The new lead official is responsible for the administration of all free throws.

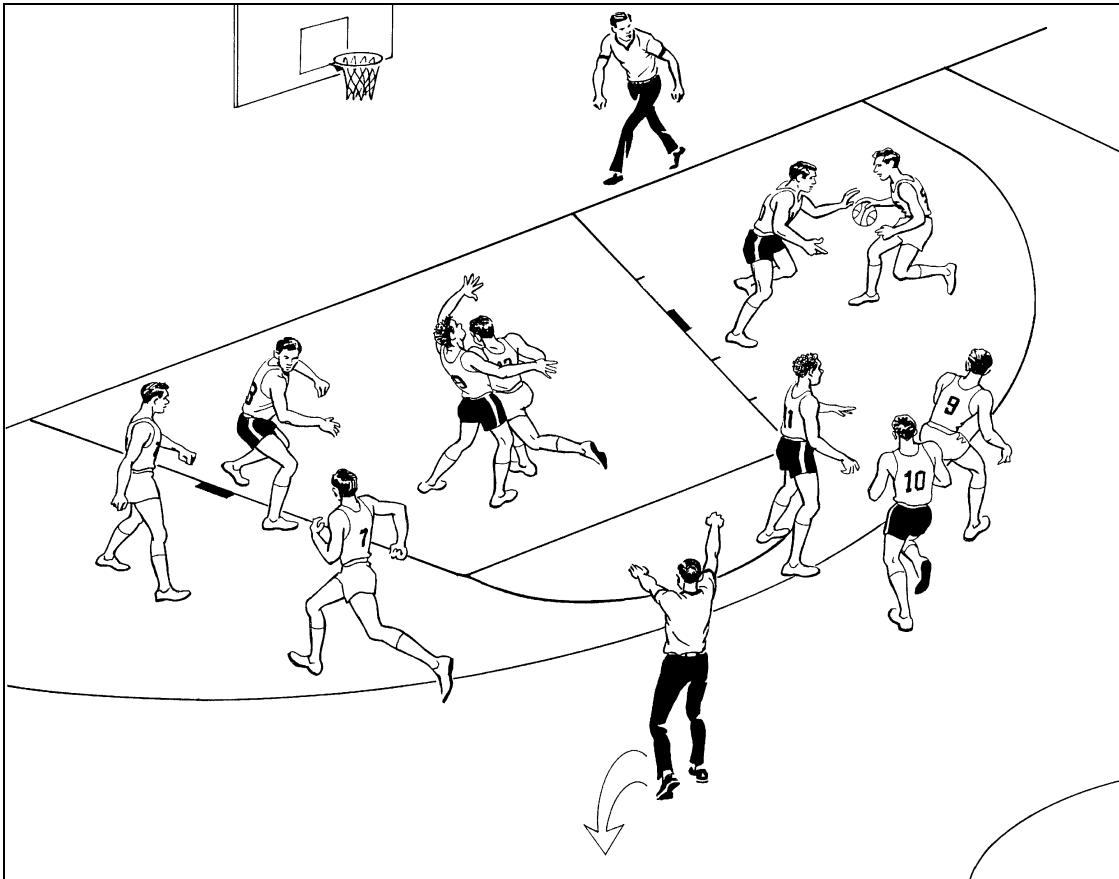


Diagram 149

Team control foul occurs away from the ball.

The trail official who is responsible for the play blows his whistle for the offensive foul and reports the foul to the scorer's table.

The lead official stands still momentarily and observes the players. After his partner has finished the reporting of the foul, they will exchange positions.

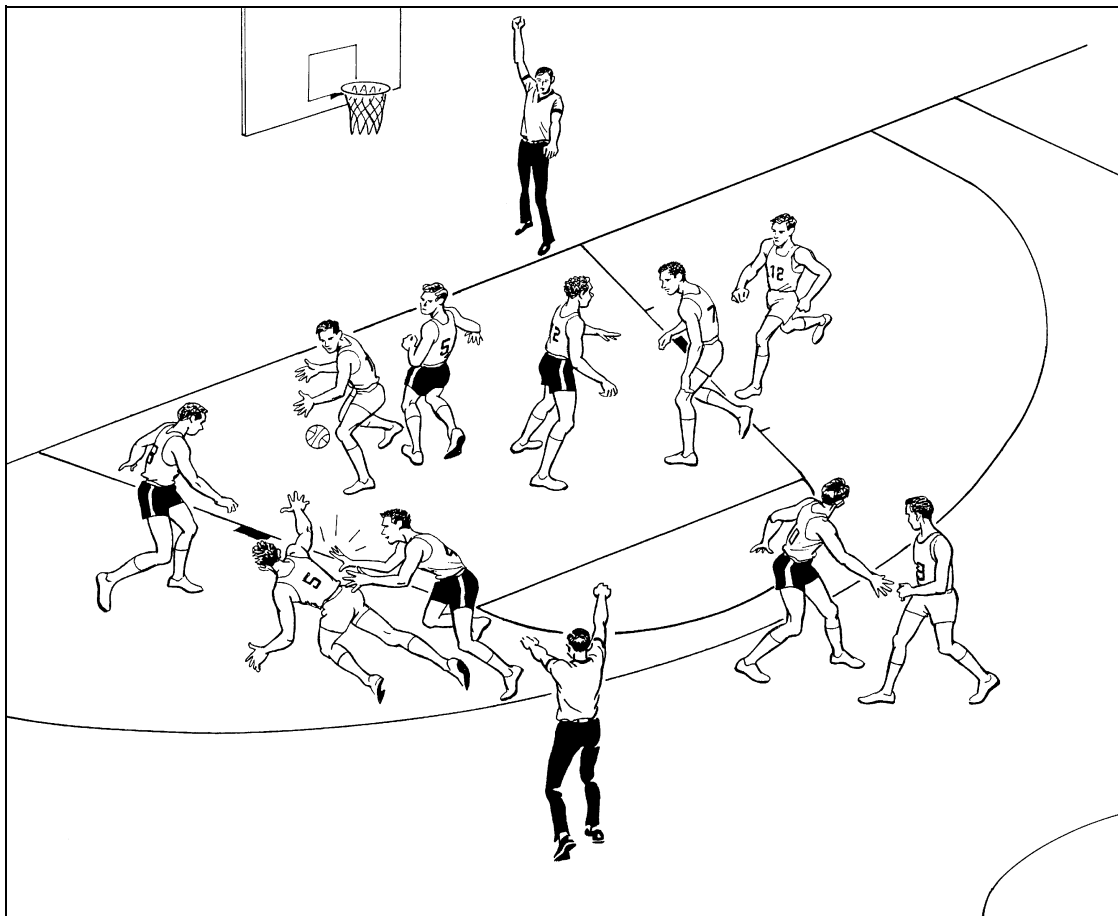


Diagram 150

7.9 Both officials calling

There will be occasions when both officials will blow the whistle at approximately the same time (double whistle). Whenever this occurs, the two (2) officials should immediately establish eye contact with each other to verify the call. Close cooperation between the two (2) officials is absolutely essential.

In this case both are blowing their whistles for a defensive foul.

The nearest official or the official towards whom the play is moving, takes the call in order to avoid conflicting decisions by the two (2) officials.

As this foul occurred closer to the trail official, he is the one who will report the foul.

The lead official will observe all the players while the trail official is reporting the foul to the scorer's table.

The officials will not exchange positions.

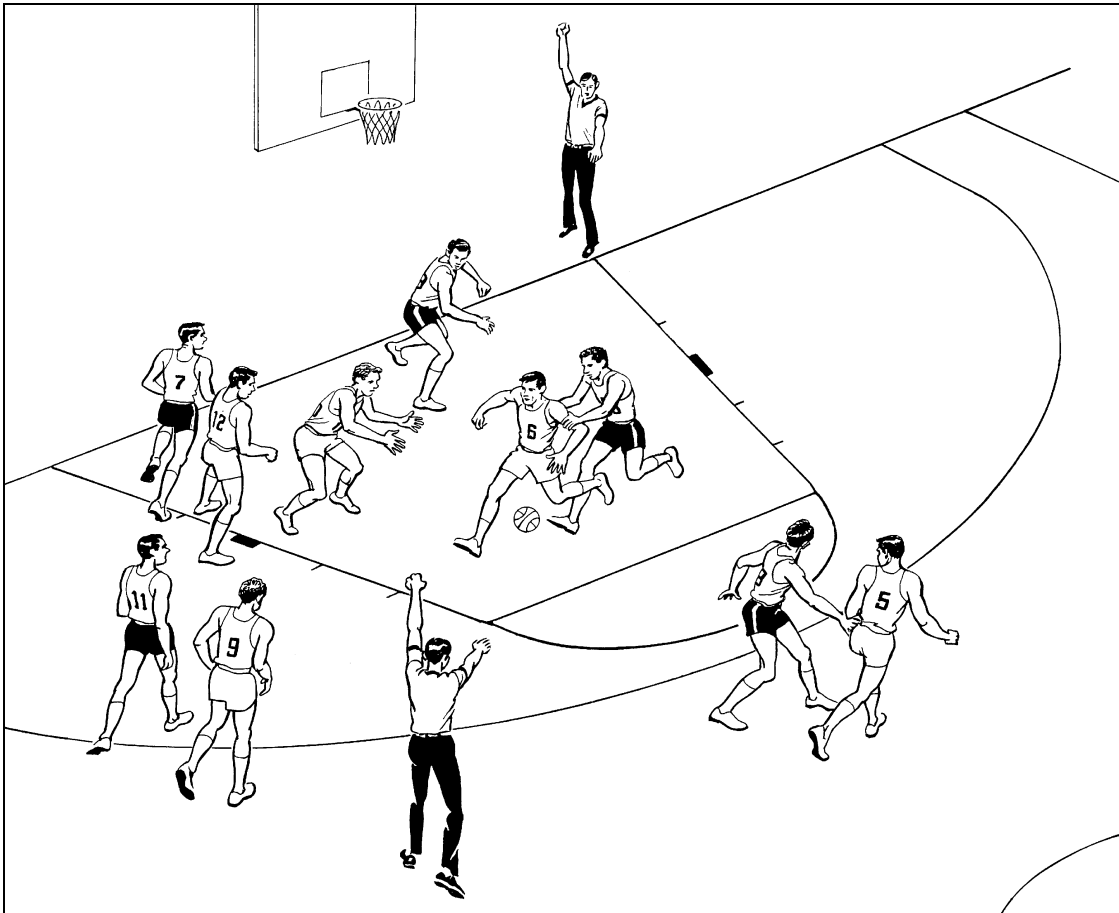


Diagram 151

The two (2) officials blow their whistles for the defensive foul at approximately the same time. It is not readily apparent which official is the nearest to the situation.

It is the official towards whom the play is moving who will take the call unless the other official noticed some other foul or violation prior to the double whistle.

In this case, the trail official will take the responsibility for reporting the foul.

Once again eye contact between the officials is essential. Good cooperation is a quality that all officials should strive for, especially when there are double whistles on the same play.

Again the lead official watches the players when his partner has commenced the reporting procedure.

The officials will not exchange positions.

8 Free-throw Situations

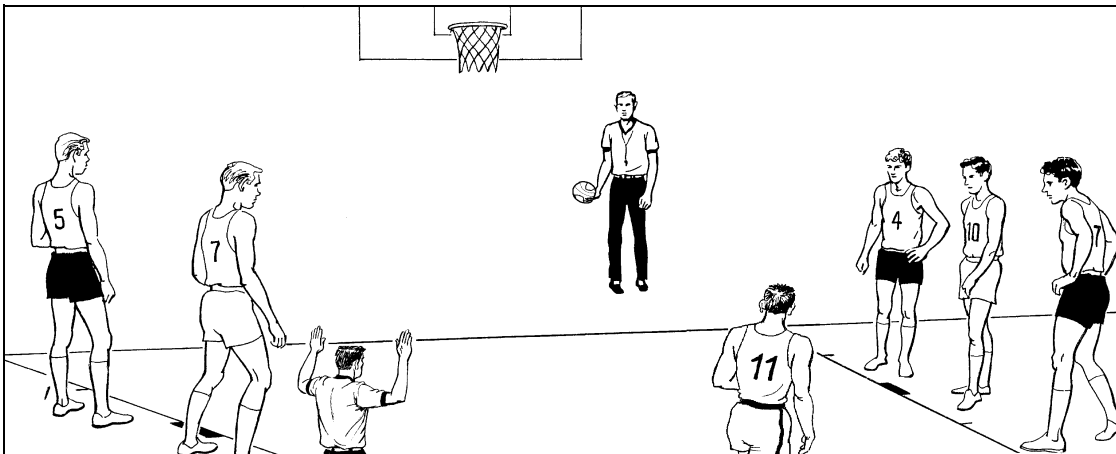


Diagram 152

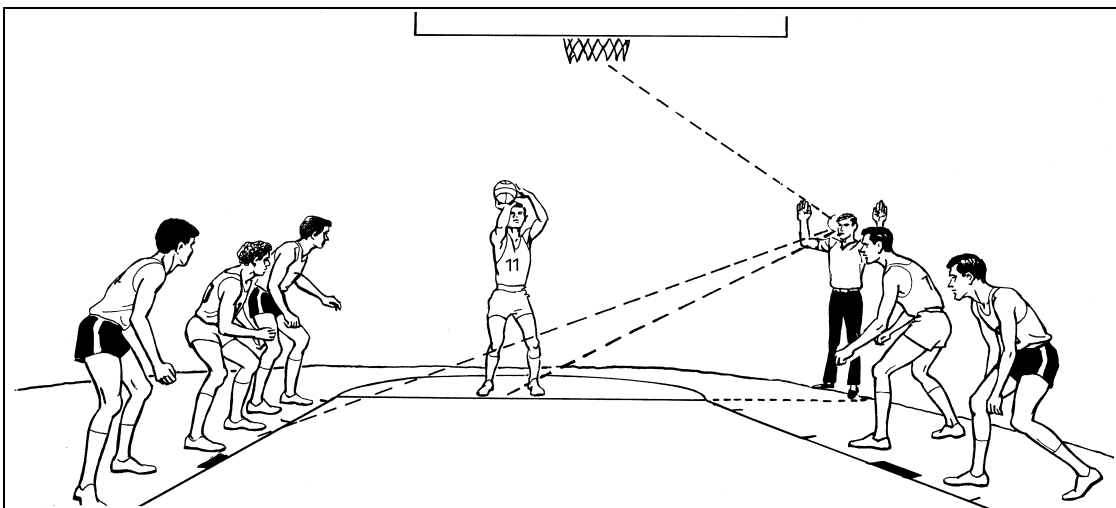


Diagram 153

8.1 Trail official

A foul has been called with free throws as the penalty.

The new trail official moves to a position where the free-throw line extended intersects the three-point line, to the left of the free thrower.

Once the lead official has finished signalling to the players the number of free throws to be attempted, he shall become the new trail official and signal the number of the free throws by raising his arm(s) (Diagram 153).

He is responsible for:

1. Watching the shooter.
2. Watching the players along the opposite side of the restricted area.
3. Counting five (5) seconds.
4. Watching the flight of the ball and the ball on the ring.
5. Confirming if the free throw was successful.

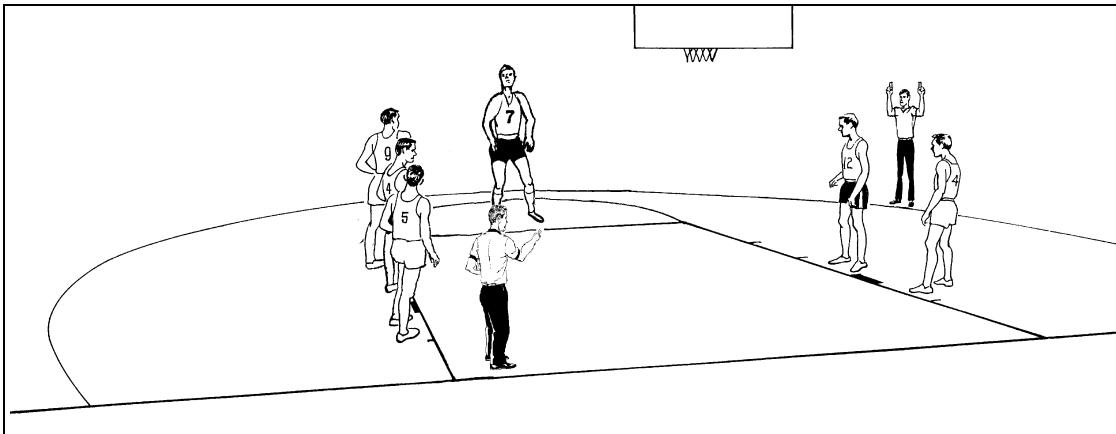


Diagram 154

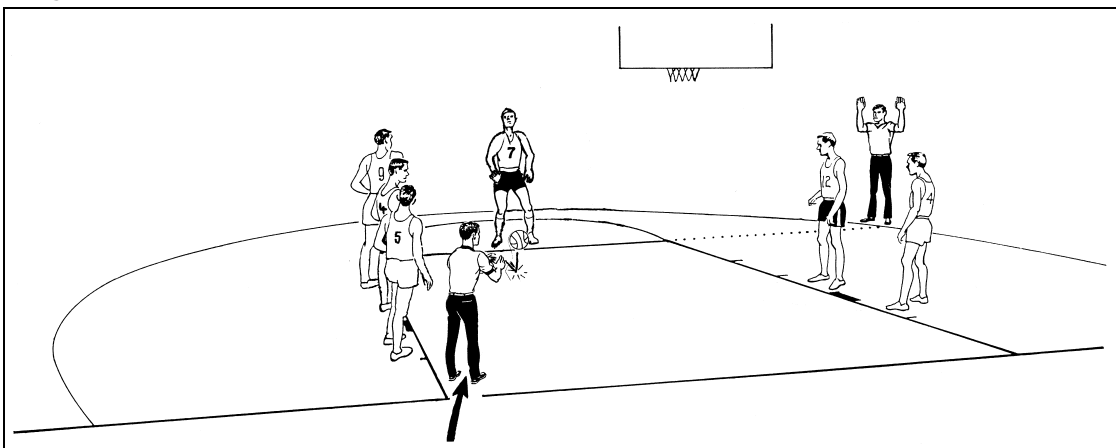


Diagram 155

8.2 Lead official

The lead official **takes a position** under the basket with the ball in his hands and administers all the free throws from that position.

When the players are lined up **correctly, he enters** the restricted area and signals to the players the number of free throws to be attempted (Diagram 154). He then **looks to the scorer's table, after which he** bounce passes the ball to the free-throw shooter (Diagram 155). He is responsible for collecting the ball after each free throw.

After each free throw, he takes a position away from the basket with one foot on either side of the line extended from the restricted area and behind the endline **holding his arms down**.

After the ball leaves the hand of the free-throw shooter on the last or only free throw, he should take a step to the **right** in order to get a better view of the rebounding action.

He is responsible for:

1. Watching the players along the opposite side of the restricted area.
2. Looking for contact situations and possible violations of the free throw provisions by players entering the restricted area before the ball leaves the hand of the free-throw shooter.

Note: Once the ball is at the disposal for a player for the first or only throw, the substitutions or time-outs shall not be granted **unless the last free throw is successful or the last free throw is followed by the possession of the ball for the throw-in from the centre line extended**.

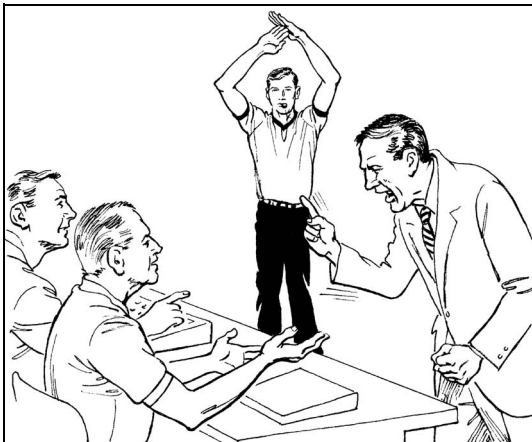
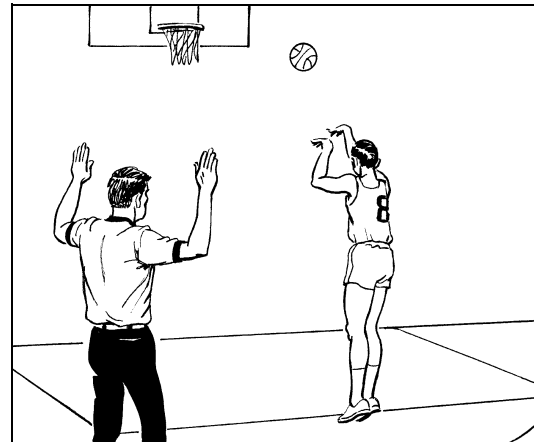

Diagram 156

Diagram 157

Diagram 158

8.3 Free throws without line up of players

For all technical (Diagram 156) unsportsmanlike or disqualifying fouls, the penalty is two (2) free throws and possession of the ball for a throw-in from the centre line extended, opposite the scorer's table.

As there is no possibility of a rebound situation when the free throws are completed, the players shall not line up along the restricted area (Diagram 157).

The official not calling the foul is responsible for administering the free throws.

The official who called the foul stands near the centre line extended, opposite the scorer's table, ready to administer the throw-in as soon as the free throws have been completed. The player taking the throw-in shall have one foot on either side of the centre line extended and be entitled to pass the ball to a team-mate at any place on the playing court (Diagram 158).



9 Time-outs and Substitutions

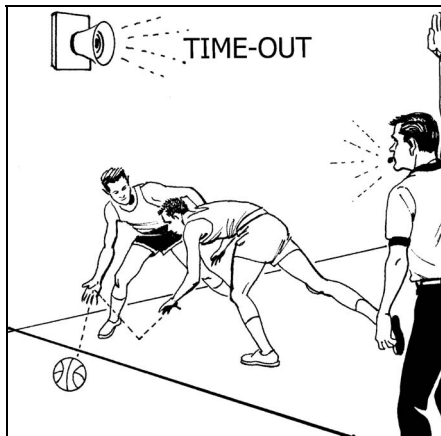
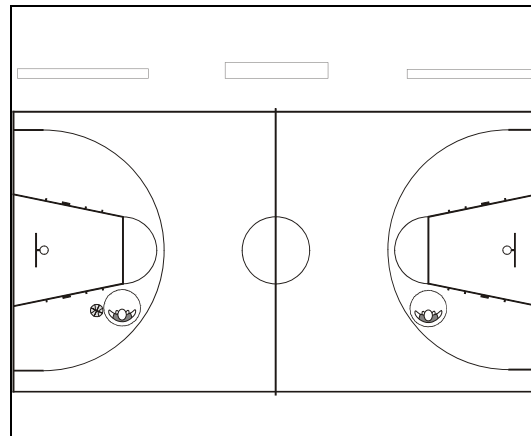
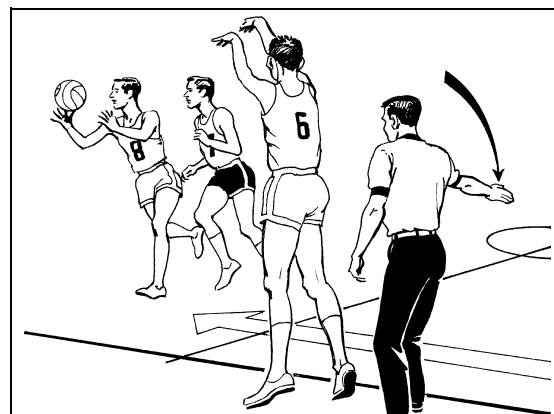
Whenever a team requests a time-out, the scorer (the timer if a field goal is scored against the team which has requested a time-out) shall indicate it to the officials by sounding his signal when the ball is dead, the game clock stopped and, if an official is reporting a foul, he has finished his communication with the scorer's table.

The official nearest to the scorer's table blows his whistle and makes the time-out signal.

The officials then move into their respective positions (Diagram 160) to observe the players, substitutes and coaches of the teams and to have eye contact with the scorer's table. When 50 seconds of the time-out have elapsed, the timer shall sound his signal and the referee shall blow his whistle to call the teams to return on the court immediately to resume the game. Players are not permitted to return to the court before these signals.

A time-out is not meant to be an opportunity for the officials to engage in conversation. Any discussion necessary should be as brief as possible.

If it has been the last time-out permitted for a team during a half, the referee shall, after its completion, inform the coach that he has taken his last time-out.


Diagram 159

Diagram 160

Diagram 161

9.1 Administration of time-out

The ball goes out-of-bounds on the sideline opposite the scorer's table and is called by the trail official (Diagram 159).

The lead official is closer to the scorer's table and therefore is the one to administer the time-out. He then moves to the left position (facing the scorer's table) to observe the table officials and the team in front of him (Diagram 160).

The other official, with the ball at his disposal, moves to the right position to observe the table officials and the team in front of him, with the ball on the floor or in his hands (Diagram 160).

Once the time-out is over, the officials shall return to their original positions.

Again, close cooperation between the officials is needed.

With everyone ready, the ball is handed to the player taking the throw-in. The official who administers the throw-in gives the time-in signal when the ball first touches a player on the court (Diagram 161).

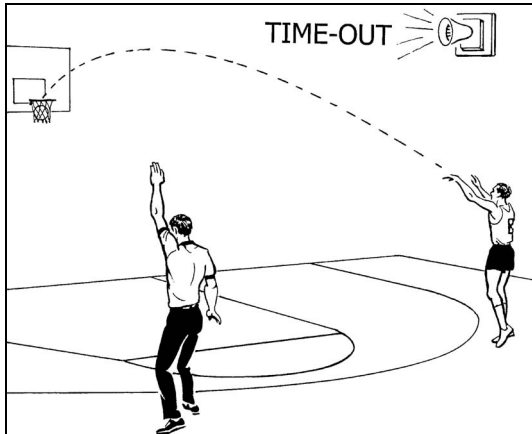


Diagram 162

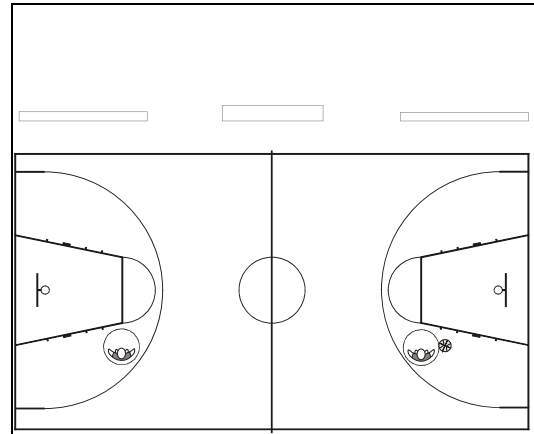


Diagram 163

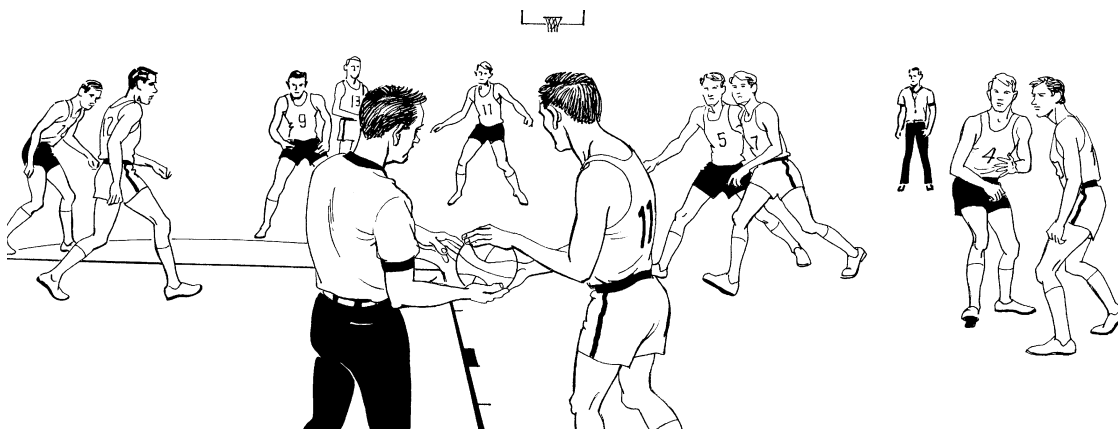


Diagram 164

9.2 Time-out after successful field goal

A coach may be granted **a time-out**, if, following his request, the opponents score a field goal and his request was made before the ball is at the disposal of a player for the throw-in (Diagram 162).

The **timer** stops the game clock and the **scorer** indicates to the officials that a time-out has been requested.

The trail official blows his whistle and gives the time-out signal. He takes the left position (facing the scorer's table) to observe the table officials and the team in front of him.

The lead official takes the right position to observe the table officials and the team in front of him (Diagram 163).

When all the players from both teams have returned to the court and after the officials have made eye contact, the new trail official will hand the ball to the player who is to take the throw-in from the endline (Diagram 164).

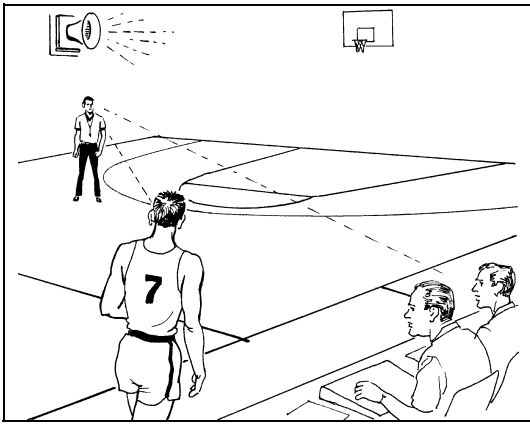


Diagram 165

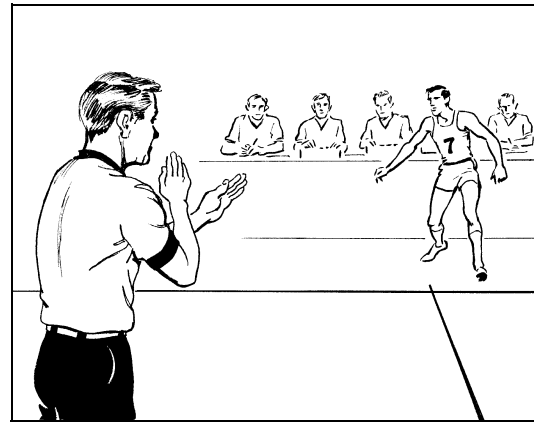


Diagram 166



Diagram 167

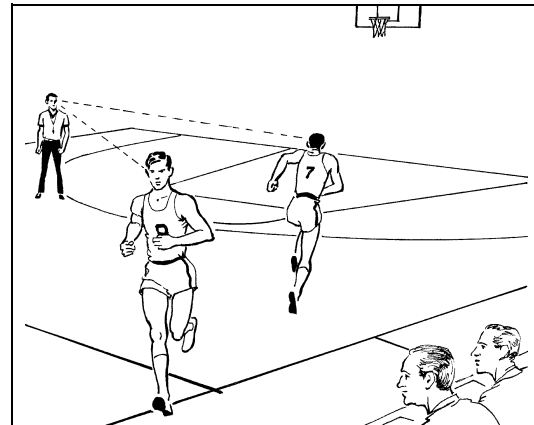


Diagram 168

9.3 Administration of substitution

When a substitution opportunity begins, the **scorer** signals to the officials that a substitution has been requested. The nearest official to the scorer's table acknowledges the request for the substitution by blowing his whistle, giving the substitution signal (Diagram 166) and beckoning the new player(s) onto the court. A simple wave of the hand from the official is sufficient (Diagram 167) as it is important not to delay the game. The official administering the substitution should not be 'policeman-like' in controlling the situation.

The primary responsibility for having five players on the court after the substitution rests with the coach, **not** the officials.

The players leaving the game do not have to report to the **scorer** and are permitted to go directly to their team's bench (Diagram 168).

Officials should always keep in mind that the game needs to be resumed as quickly as possible.

The game must maintain its speed and therefore:

- Under no circumstances should there be delays to the game because of poor and improper movement of the officials on the court, especially after the game clock has been stopped and the ball is dead.
- Under no circumstances should there be a situation in which the players are ready to resume the game (throw-ins, free throws) and the officials are still not in the required position to resume the game.
- In all situations in which the game clock is stopped and the ball is dead, if the officials are required to move, they must do so quickly.

10 End of playing time

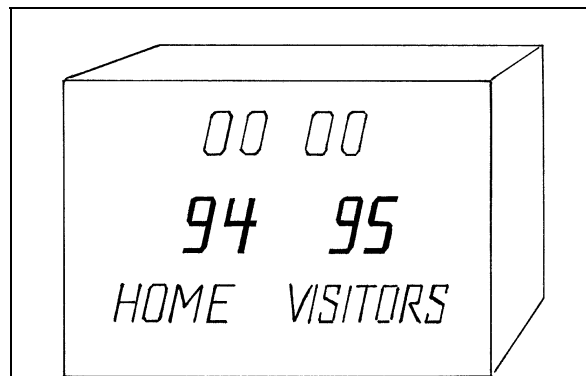


Diagram 169

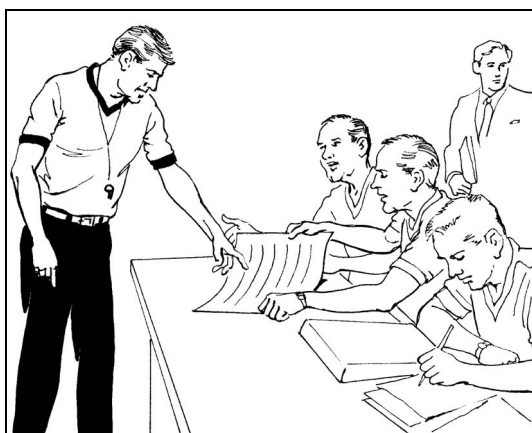


Diagram 170

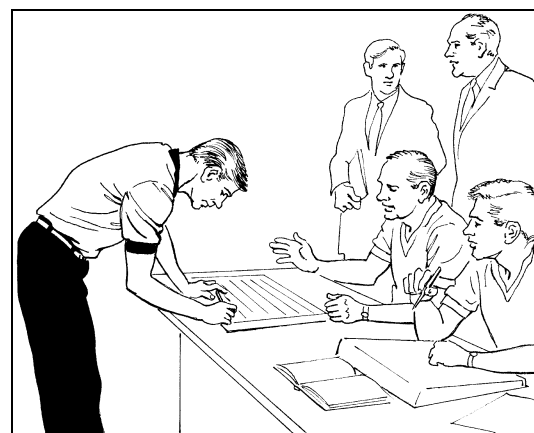


Diagram 171

10.1 Checking the scoresheet

When the game clock sounds for the end of playing time, unless circumstances dictate otherwise, the two (2) officials should move towards the scorer's table.

After the **scorer** has completed the scoresheet, the **scorer** shall ensure that the assistant **scorer**, the **timer** and the twenty-four second operator have entered their names in block letters.

After the **scorer** has also entered his name, the scoresheet should be presented to the referee for verification.

Once the referee is satisfied with its accuracy, it is signed first by the umpire and then by the referee.

This approval and signing of the scoresheet terminates the officials' administration and connection with the game.

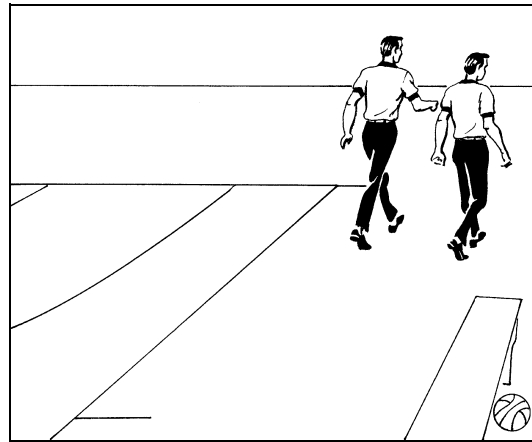
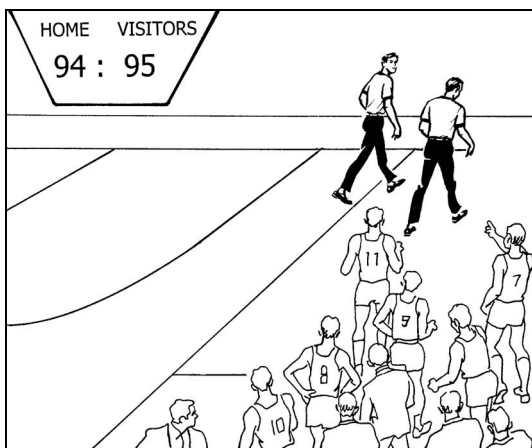

Diagram 172

Diagram 173

Diagram 174

Diagram 175

It is customary to thank the table officials and the commissioner for their efforts, as they are also part of the team. A handshake is the normal practice.

Both officials should leave the floor together.

If the game score is close at the end of the playing time, there might be occasions when it is more prudent to check and sign the scoresheet in the privacy of the officials' dressing room.

In such circumstances it is imperative that the officials look for each other at the conclusion of the game and try, where possible, to leave the floor together, proceeding directly to the dressing room.

If such action proves necessary, the officials should avoid any subsequent discussion with coaches, players and spectators. In all circumstances, the officials must be courteous and polite.

The officials have worked hard. They have given their best together:

"I was not the referee;
 You were not the umpire;
 We were a team."



11 Review comments

A pre-game conference is absolutely necessary.

1. Know your areas of responsibility on the floor and avoid having both officials watch the ball and the players immediately surrounding it.
2. Referee the play away from the ball when it is your primary responsibility.
3. With double whistles, establish eye contact with your partner before proceeding with your signal.

Remember: The official closest to the play or towards whom the play is moving shall have primary responsibility.

4. Give help when required on out-of-bounds situations, but only when requested to do so by your partner. Get into the habit of establishing eye contact.
5. Try to know at all times, not only where the ball and all the players are located, but also the location of your partner.
6. In fast break situations, especially where the offensive players outnumber those on defence, let the nearest official make the decision on whether or not to call the foul. Avoid the temptation to make a call when you are ten (10) metres or more away from the action.
7. **Blow your whistle for a foul only when it has an effect on the action.** Incidental contact should be ignored. Look for plays that need to be called.
8. Excessive use of hands **must** not be allowed. A mere touch in itself is not a foul, but any illegal prevention of a player's movement seeking to obtain a new position is a foul.
9. **Establish your standards early in the game.** The game will become easier to control. Rough and over-aggressive play must always be penalised. The players will adjust to the way you allow them to play.
10. Be vigilant on rebound situations. If a player in an unfavourable position gains an unfair advantage, it is a foul. **Contact, when it is not intentional and does not affect the play, should be ignored.**
11. Keep on the move as the play comes towards you and try to maintain the best possible position and a wide angle of vision between the defensive and offensive players. Be on top of the play when you make the call.
12. Make sure you know where the ball is when you call three (3) seconds and **make sure you have counted three (3) seconds after you have seen the offensive player** in the restricted area.

13. **Do not stop the game just to warn a player or a coach** regarding his conduct. If the warning is necessary, do so when the game clock is stopped and ball is dead. **If it is necessary to stop the game, a technical foul must be called.**
14. The coaches should not be allowed to become the centre of attention with theatrical gestures and constant complaining. This behaviour is not to be tolerated. The officials must stop this early. Do not be afraid to call the technical foul when the coach tries to intimidate or harass you.
15. When you report a foul and the team foul marker is in operation, confirm with the **scorer** whether it is the fourth (4th) or fifth (5th) player foul by the team, before indicating the penalty.
16. Slow down your signals to the **scorer**, especially when giving the player's number.
17. Work as a team with your partner. Do your best to cooperate. **Make eye contact before handing the ball to a player for a throw-in.**
18. You arrive on the floor together. Therefore, whenever possible, try to leave the playing court together.
19. **Never stop moving. Adjust your position when the ball moves. You are also an athlete.**

12 Conclusion

The officials are entrusted to see that the game is played within the framework and guidelines of the Rules. They have to make instantaneous decisions.

Inevitably any decision that is taken quickly will, at times, lack rationality and occasionally may even be wrong.

'No official is perfect'. There will never be a game after which the official can look back and say, 'I was faultless'. Human activity necessitates human judgements.

Basketball is competitive. It is a game charged with emotion, where tempers and friction can run high, especially when the score is close. The officials **must** always have the game under control. This means the officials must be firm, decisive and unshakeable.

Officials must understand something about the players and coaches and be aware of what makes them tick and how they perform. No official can have an excellent game without a reasonable amount of cooperation from the players and coaches.

Officials need an awareness of the game, an insight into the aims and objectives of players' and coaches' tactical manoeuvres, as well as an understanding of the strains and pressures affecting them. Officials must understand the frustrations of playing and coaching. The players, the coaches and the officials all belong together; they are not members of separate factions.



Concentration is vital for officials. It is usually learned the hard way. While the player has the opportunity to break concentration when not directly involved with the ball, the official can relax only briefly when time-outs and substitutions are made. Concentration diminishes with the onset of fatigue, as the game progresses into its final stages.

Physical and psychological preparation becomes very important. You are not anticipating what will actually happen; rather it is preparation for the most likely eventualities. Simply expressed, it is an awareness of the best possible position from which to watch the play and striving to get to that position.

Officiating is being in the right place at the right time to make the right call. Positioning is the key factor.

There is a high correlation between the location of the official and the accuracy of his decisions.

Officiating is not an easy task. The players are big and fast, the pace of the game intense. It is difficult to control or even see everything that happens. Good officials try to follow the play away from the ball, but of course, just as everyone else, there is always the tendency to focus on the spectacular scoring plays.

An official's greatest virtue is consistency. It is important to try to call the same play the same way, irrespective of the stage of the game or other pressures.

The best officials have an easy authority, a rapport with players and coaches, the ability to keep a calm and steady presence in the most demanding circumstances, a thorough understanding of the game and acute powers of observation. They are intelligent people in excellent physical condition.

Basketball is a game of passion, of involvement and commitment, requiring officials with **a feel for the game.**

When you become an official, you will never again see the game as a mere spectator.

Nevertheless, it is still a game and should be enjoyed by everyone.

Even officials may smile!